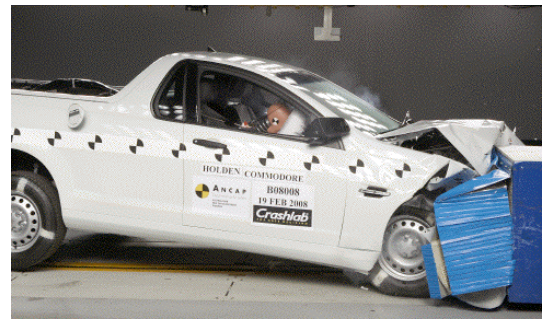


Crash Test Results

New Car Safety

HOLDEN COMMODORE UTE

Sep 2009 on Front+side+head airbags



Offset crash test at 64km/h

FRONTAL OFFSET CRASH TEST (v4.1)

Body region scores out of 4 points each: Head/neck 4 pts, chest 2.50 pts, upper legs 2 pts, lower legs 3.07 pts.

The passenger compartment held its shape well in the offset crash test. The accelerator pedal moved rearwards by 25 mm and downwards 3mm. The steering wheel hub moved 58mm forward, 52mm downward and 5 mm sideways. The front ("A") pillar moved 11 mm rearwards. All doors remained closed during the crash. After the crash the driver's door could be opened with normal effort.

The airbag cushioned the head of the driver and contact was stable. There were no knee hazards. The passenger's head was cushioned by the airbag.

SIDE IMPACT CRASH TEST (v4.1)

Body region scores out of 4 points each: Head 4 pts, chest 2.84 pts, abdomen 4 pts, pelvis 4 pts.

The vehicle was eligible for an optional pole impact test, since it had head-protecting side airbags and it was within reach of a 5-star rating. The manufacturer decided to go ahead with the pole test and the vehicle earned a further two points.

PEDESTRIAN PROTECTION: 1 Star

The following rating is based on ANCAP tests of a Commodore sedan. The Utility can be expected to offer similar protection.

Occupant Protection Score 33.16 out of 37

Variant: Omega Eng: 3.6 litre V6, auto

Kerb weight: 1690 kg Category: UTILITY

Vehicles built: 2008 & 2009

Model History and Safety Features

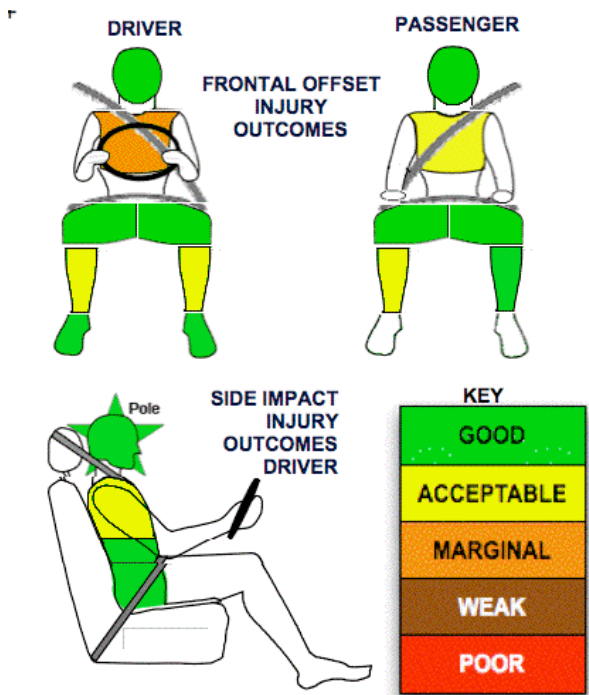
This rating applies to all variants of the VE Commodore Ute (model year 2010) built from September 2009.


Dual front airbags, seat-mounted side airbags, head-protecting side curtains, antilock brakes (ABS) with electronic brake distribution (EBD) and electronic stability control (ESC) are standard. Advanced seat belt reminders are fitted to both front seats.

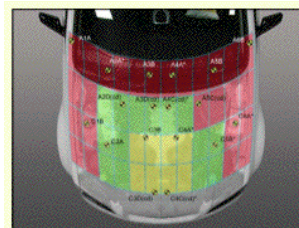
OCCUPANT PROTECTION: 5 Stars

The Commodore Ute scored 13.57 out of 16 in the offset crash test. The passenger compartment held its shape well. Protection from serious chest injury was marginal for the driver.

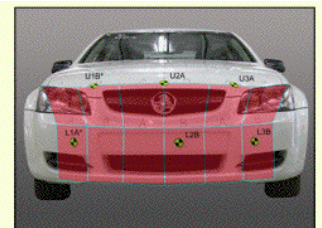
The vehicle scored 15.59 out of 16 in the side impact crash test. There was a slight risk of serious chest injury for the driver. A further 2 points were earned in the optional pole test. This enabled the Commodore Ute to become the first 5-star utility rated by ANCAP.



PEDESTRIAN PROTECTION	Child head impacts	5.98
 ANCAP Rated ★ ★ ★ ★ ★ Commodore sedan v4.1	Adult head impacts	3.00
	Upper leg impacts	Zero
	Lower leg impacts	Zero
	Total (out of 36)	8.98



Child and adult head impact



Adult leg impact (upper and full legforms)

fair marginal poor

October 2009

PO Box 4041

Manuka ACT 2603

comm_ute10.doc

Issued 1/10/2009



www.ancap.com.au

TECHNICAL DATA - HOLDEN VE COMMODORE UTILITY - Oct 2009 on

INJURY MEASUREMENTS

Body region	Offset Crash Test at 64km/h (v4.1)		Side Impact Crash Test at 50km/h (v4.1)
	Driver	Passenger	Driver
Head HIC	262	180	28
Acceleration (g for 3ms)	39.9	33.6	23.1
Neck - Shear (kN)	0.31	0.46	-
Tension (kN)	0.95	0.79	-
Extension (Nm)	7.7	21.4	-
Chest Accln (g for 3ms)	37.20	32.10	-
Compression (mm)	32.47	28.70	23.5
Viscous criterion (m/s)	0.09	0.07	0.16
Abdomen - Force (kN)	-	-	0.53
Pelvis - Force (kN)	-	-	1.58
Upper legs Force (kN)			
Left	0.45	0.15	
Right	0.55	0.29	
Knee displ (mm)			
Left	0.50	0.37	
Right	0.16	0.37	
Lower legs Force (kN)			
Left	2.68	1.15	
Right	3.06	1.66	
Index (Upper/Low)			
Left	0.38 /0.61	0.30 /0.18	
Right	0.32 /0.23	0.42/0.26	

Bonus points (maximum 5)

Pole Test: 2 points

Seat belt reminders: 2 (see table below for details)

Modifiers - deductions from offset test scores

Head	No deduction
Chest	No deduction
Upper leg Variable & conc. loading	No deduction
Lower leg	No deduction
Foot score	Score 4 points

Note: Steering column and pedal movements are measured relative to the driver's seat.

Modifiers - deductions from side impact test scores

Chest Backplate load	0.11 deduction
----------------------	----------------

Safety features

These specifications are subject to change. Please check with manufacturer for the latest specifications.



Feature	Standard	Description	Rating
Driver airbag	S	Antilock (ABS) brakes / Electronic brake distribution / Brake Assist	S/S/S
Passenger front airbag	S	Electronic stability control (ESC, VSC, DSC, ESP, VSA)	S#
Side airbags, front seats - chest protection	S	3 point centre rear seat belt	-
Side airbags, front seats - head protection	S	Active head restraints - front seats	X
Side airbags, rear seats - head protection	-	Intelligent seat belt reminder - driver	S
Driver knee airbag	X	Intelligent seat belt reminder - front passenger	S
Seat belt pretensioners (front/rear outboard)	S/-	Rear seat belt status indicator	-

Key:

S = standard on all variants

O = optional on base variant. May be standard on higher variants

V= not available on base variant but standard or optional on higher variants

X = not available on any variant

ESC required by ANCAP for 5 star rating from 2008