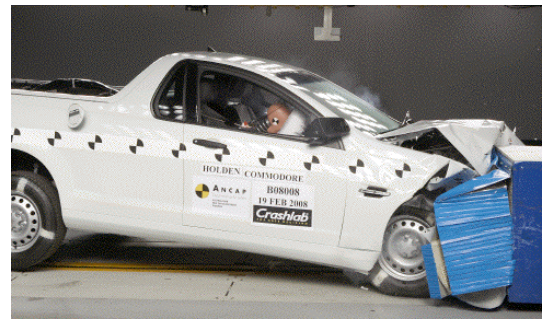


Crash Test Results

New Car Safety

HOLDEN VE COMMODORE OMEGA UTILITY

Oct 2008 on Dual front airbags



Offset crash test at 64km/h

FRONTAL OFFSET CRASH TEST (v4.1)

Body region scores out of 4 points each: Head/neck 4 pts, chest 2.50 pts, upper legs 2 pts, lower legs 3.07 pts.

The passenger compartment held its shape well in the offset crash test. The accelerator pedal moved rearwards by 25 mm and downwards 3mm. The steering wheel hub moved 58mm forward, 52mm downward and 5 mm sideways. The front ("A") pillar moved 11 mm rearwards. All doors remained closed during the crash. After the crash the driver's door could be opened with normal effort.

The airbag cushioned the head of the driver and contact was stable. There were no knee hazards with the revised steering column design. The passenger's head was cushioned by the airbag.


SIDE IMPACT CRASH TEST (v4.1)

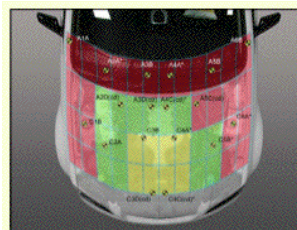
Body region scores out of 4 points each: Head 4 pts, chest 2.84 pts, abdomen 4 pts, pelvis 4 pts.

The vehicle was not eligible for a Pole Impact Test since it did not have head-protecting side airbags. This test can earn eligible vehicles an extra two points.

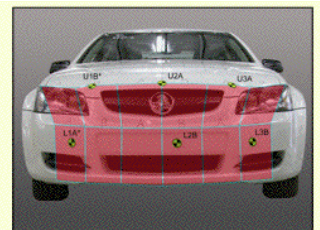
PEDESTRIAN PROTECTION: 1 Star

The following rating is based on ANCAP tests of a Commodore sedan. The Utility can be expected to offer similar protection.

PEDESTRIAN PROTECTION		
 ANCAP Rated ★ ★ ★ ★ ★ Commodore sedan v4.1	Child head impacts	5.98
	Adult head impacts	3.00
	Upper leg impacts	Zero
	Lower leg impacts	Zero
	Total (out of 36)	8.98



Child and adult head impact



Adult leg impact (upper and full legforms)

fair marginal poor

Occupant Protection Score 30.41 out of 37

Variant: Omega

Eng: 3.6 litre V6, auto

Kerb weight: 1690 kg

Category: UTILITY

Vehicles built: 11/2007

Model History and Safety Features

The tested model of VE Commodore Utility was introduced in Australia during 2007. This ANCAP rating applies to Commodore Utes with a front passenger seat belt reminder and a redesigned steering column cover. The Omega variant is the first with these upgrades, applicable to vehicles built from October 2008.

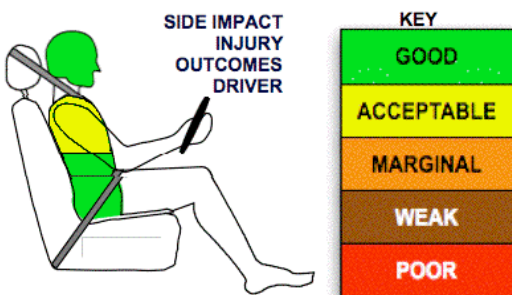
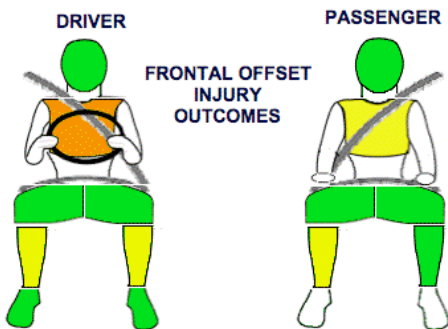
Dual front airbags, antilock brakes (ABS) with electronic brake distribution (EBD) and electronic stability control (ESC) are standard. Advanced seat belt reminders are fitted to both front seats.

The front seat belt buckles are mounted on the seats and the upper anchorages are adjustable. These features improve the fit of the seat belt. Pretensioners are fitted to the front seat belts to reduce slack in the event of a crash.

OCCUPANT PROTECTION: 4 Stars

The Commodore Utility scored 13.57 out of 16 in the offset crash test. The passenger compartment held its shape well. Protection from serious chest injury was marginal for the driver.

The vehicle scored 14.84 out of 16 in the side impact crash test. There was a slight risk of serious chest injury for the driver.



May 2009

PO Box 4041

Manuka ACT 2603

comm_ute09.doc

Issued 30/4/2009



TECHNICAL DATA - HOLDEN VE COMMODORE UTILITY - Oct 2008 on

INJURY MEASUREMENTS

Body region	Offset Crash Test at 64km/h (v4.1)		Side Impact Crash Test at 50km/h (v4.1)
	Driver	Passenger	Driver
Head HIC	262	180	71
Acceleration (g for 3ms)	39.9	33.6	38.7
Neck - Shear (kN)	0.31	0.46	-
Tension (kN)	0.95	0.79	-
Extension (Nm)	7.7	21.4	-
Chest Accln (g for 3ms)	37.20	32.10	-
Compression (mm)	32.47	28.70	27.80
Viscous criterion (m/s)	0.09	0.07	0.33
Abdomen - Force (kN)	-	-	0.753
Pelvis - Force (kN)	-	-	1.390
Upper legs Force (kN)			
Left	0.45	0.15	
Right	0.55	0.29	
Knee displ (mm)			
Left	0.50	0.37	
Right	0.16	0.37	
Lower legs Force (kN)			
Left	2.68	1.15	
Right	3.06	1.66	
Index (Upper/Low)			
Left	0.38 /0.61	0.30 /0.18	
Right	0.32 /0.23	0.42/0.26	

Bonus points (maximum 5)

Pole Test: Not eligible due to a lack of head-protecting side airbags

Seat belt reminders: 2 (see table below for details)

Modifiers - deductions from offset test scores

Head	No deduction
Chest	No deduction
Upper leg Variable & conc. loading	No deduction
Lower leg	No deduction
Foot score	Score 4 points

Note: Steering column and pedal movements are measured relative to the driver's seat.

Modifiers - deductions from side impact test scores

Chest	No deduction
-------	--------------

Safety features

These specifications are subject to change. Please check with manufacturer for the latest specifications.

Driver airbag	S	Antilock (ABS) brakes / Electronic brake distribution / Brake Assist	S/S/?S
Passenger front airbag	S	Electronic stability control (ESC, VSC, DSC, ESP, VSA)	S#
Side airbags, front seats - chest protection	X	3 point centre rear seat belt	-
Side airbags, front seats - head protection	X	Active head restraints - front seats	X
Side airbags, rear seats - head protection	-	Intelligent seat belt reminder - driver	S
Driver knee airbag	X	Intelligent seat belt reminder - front passenger	S@
Seat belt pretensioners (front/rear outboard)	S/-	Rear seat belt status indicator	-

Key: @ Front passenger seat belt reminder standard on Omega variant from October 2008. Other variants are expected to have this feature by mid 2009. Variants without this feature still rate 4 stars for occupant protection.

S = standard on all variants

O = optional on base variant. May be standard on higher variants

V= not available on base variant but standard or optional on higher variants

X = not available on any variant

ESC required by ANCAP for 5 star rating from 2008

