

# Crash Test Results

## New Car Safety

### HOLDEN COLORADO 4x4

2008 on

Dual front airbags



Offset crash test at 64km/h



**ANCAP** Occupant Protection  
Rated ★★★★★

**Occupant Protection Score** 21.40\* out of 37

\* High risk of life-threatening chest injury

Variant: LX Crew cab Eng: 3 litre diesel

Kerb weight: 1890 kg Category: UTILITY

Vehicles built: 7/05

#### Model History and Safety Features

The tested model of Holden Colorado was introduced in Australia during 2008. This assessment is based on crash tests of the equivalent Holden Rodeo published by ANCAP in 2006.

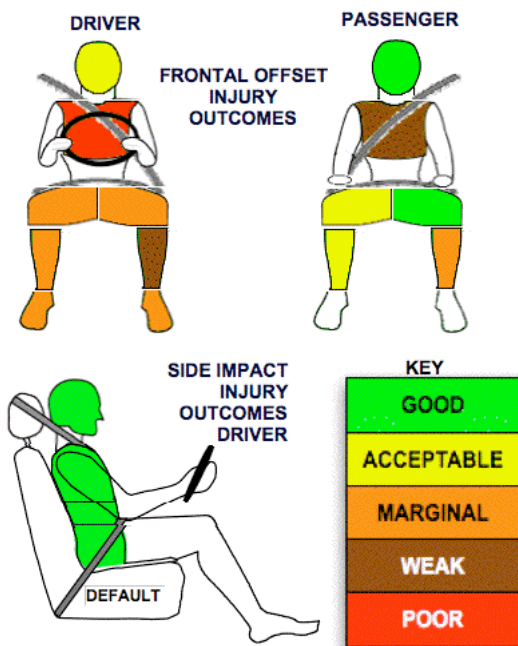
Dual front airbags are standard equipment. Antilock brakes (ABS) with electronic brakeforce distribution are standard on all LX 4x4 versions but are not available for the DX versions.

A three point seat belt is fitted to the centre rear seat. This provides better protection than a two point seat belt. Child restraint anchorages are fitted behind the rear seat but are difficult to reach. Hazard lights activated during the crash.

#### OCCUPANT PROTECTION: 3 Stars

The Colorado 4x4 scored 5.4 out of 16 in the offset crash test. The passenger compartment held its shape reasonably well. Protection from serious chest injury was poor for the driver and weak for the passenger. Leg protection was marginal for the driver.

The vehicle was awarded a default score of 16 out of 16 in the side impact crash test.



#### FRONTAL OFFSET CRASH TEST (v4.1)

Body region scores out of 4 points each: Head/neck 3 pts, chest zero pts, upper legs 2 pts, lower legs 0.40 pts.

The passenger compartment held its shape reasonably well in the offset crash test. The brake pedal moved rearwards by 124 mm and upwards 36 mm. The footwell ruptured. The steering wheel hub moved rearwards 11 mm, upwards 100 mm and sideways 11 mm. The front ("A") pillar moved 56 mm rearwards. The driver's door opened very late in the crash but subsequent investigations revealed it was an isolated incident, not representative of the model and no points were deducted. After the crash the other doors opened with normal effort.

The airbag cushioned the head of the driver and contact was reasonably stable. Steering column components were a potential source of injury for the driver's knees. The passenger's head was cushioned by the airbag and contact was stable.

#### SIDE IMPACT CRASH TEST (v4.1)


Body region scores out of 4 points each: Head 4 pts, chest 4 pts, abdomen 4 pts, pelvis 4 pts. Default scores awarded.

The side impact test normally used by ANCAP simulates a small car striking the driver's door of the vehicle under test. It is based on a regulation test but the regulation does not apply to vehicles with a high seat height like the Colorado 4x4. Experience shows that such vehicles can be expected to perform well in this test so ANCAP has decided to award full score for these vehicles instead of conducting a crash test.

The vehicle was not eligible for a Pole Impact Test since it did not have head-protecting side airbags. This test can earn eligible vehicles an extra two points.

#### PEDESTRIAN PROTECTION: 1 Star

Two adult headform locations passed and two were marginal. All other locations were poor.

PEDESTRIAN PROTECTION		
 v4.1	Child head impacts	Zero
	Adult head impacts	7.67
	Upper leg impacts	Zero
	Lower leg impacts	Zero
	Total (out of 36)	7.67

No picture of pedestrian rating available.

September 2008

PO Box 4041

Manuka ACT 2603

COLORADO408.DOC

Issued 17/09/2008



**ANCAP**

Crash testing for safety

AUSTRALASIAN  
NEW CAR ASSESSMENT  
PROGRAM

# TECHNICAL DATA - HOLDEN COLORADO 4x4 - 2008 on

## INJURY MEASUREMENTS

Body region	Offset Crash Test at 64km/h (v4.1)		Side Impact Crash Test at 50km/h (v4.1)
	Driver	Passenger	Driver
<b>Head HIC</b>	819	656	Default scores awarded
Acceleration (g for 3ms)	77.9	59.6	
<b>Neck - Shear (kN)</b>	0.50	0.57	
Tension (kN)	2.81	2.01	
Extension (Nm)	39.1	34.2	
<b>Chest Accln (g for 3ms)</b>	60.30	40.50	
Compression (mm)	53.50	45.40	
Viscous criterion (m/s)	0.62	0.26	
<b>Abdomen - Force (kN)</b>	-	-	
<b>Pelvis - Force (kN)</b>	-	-	
<b>Upper legs Force (kN)</b>			
Left	1.43	1.81	
Right	1.60	5.10	
Knee displ (mm)			
Left	0.68	1.33	
Right	0.99	4.47	
<b>Lower legs Force (kN)</b>			
Left	3.26	4.38	
Right	5.32	3.68	
Index (Upper/Low)			
Left	0.47 /1.21	0.56 /0.55	
Right	0.97 /0.89	0.48/0.59	

### Bonus points (maximum 5)

Pole Test: Not eligible due to a lack of head-protecting side airbags

Seat belt reminders: None

### Modifiers - deductions from offset test scores

Head	Steer col upward movement	1 pt deduction
Chest		No deduction
Upper leg	Variable & conc. loading	2 pt deduction L&R
Lower leg		No deduction
Foot score	Pedal rearward	Score 3.04 points
	Footwell rupture	1 pt deduction

Note: Steering column and pedal movements are measured relative to the driver's seat.

### Modifiers - deductions from side impact test scores

Not tested

### Safety features

These specifications are subject to change. Please check with manufacturer for the latest specifications.



Feature	Standard	Optional	Not Available
Driver airbag	S	Antilock (ABS) brakes / Electronic brake distribution / Brake Assist	O/O/X
Passenger front airbag	S	Electronic stability control (ESC, VSC, DSC, ESP, VSA)	X#
Side airbags, front seats - chest protection	X	3 point centre rear seat belt	S
Side airbags, front seats - head protection	X	Active head restraints - front seats	X
Side airbags, rear seats - head protection	X	Intelligent seat belt reminder - driver	X
Driver knee airbag	X	Intelligent seat belt reminder - front passenger	X
Seat belt pretensioners (Front/rear outboard)	X	Rear seat belt status indicator	X

Key:

S = standard on all variants

O = optional on base variant. May be standard on higher variants

V= not available on base variant but standard or optional on higher variants

X = not available on any variant

# ESC required by ANCAP for 5 star rating from 2008



**ANCAP**

Crash testing for safety

AUSTRALASIAN  
NEW CAR ASSESSMENT  
PROGRAM