

Crash Test Results

New Car Safety

HOLDEN CAPTIVA SERIES 2

From 2011 Front+side+head airbags



ANCAP
Rated ★★★★★

Occupant Protection

Occupant Protection Score 34.32 out of 37

Variant: Captiva 7 FWD Eng: 2.2 litre diesel
Kerb mass 1910 kg Category: SUV - LARGE
Vehicles built: 2011 Tested by Euro NCAP

Important note: The *diesel* right-hand-drive European model was tested by Euro NCAP. Holden provided information to ANCAP which confirms that the Holden Captiva Series 2 front-wheel-drive diesel variant is equivalent in specification to the vehicle tested by Euro NCAP.

Model History and Safety Features

The tested model of Holden Captiva Series 2 was introduced in Australia during 2011. This ANCAP rating currently applies to Captiva 7 variants with a 2.2 litre diesel engine and front-wheel-drive. Further technical information is being sought about other variants.

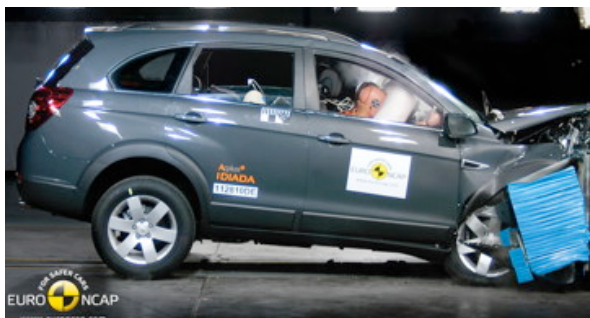
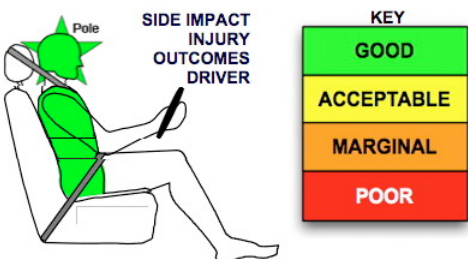
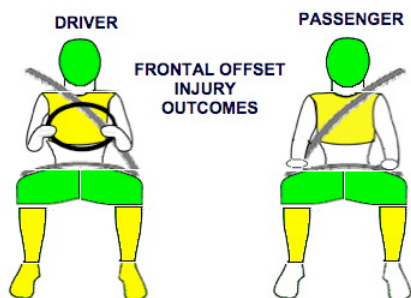
Dual front airbags, side airbags and head-protecting side curtains are standard equipment. Antilock brakes (ABS), electronic brakeforce distribution (EBD) and electronic stability control (ESC) are also standard. Intelligent seat belt reminders are fitted to the front seats.

Pretensioners are fitted to the front seat belts to reduce slack in the event of a crash. A three point seat belts are fitted to all seats.

OCCUPANT PROTECTION: 5 Stars

The Captiva scored 14.32 out of 16 in the offset crash test. The passenger compartment held its shape well. There was a slight risk of serious chest and leg injury for the driver and passenger.

The vehicle scored 16 out of 16 in the side impact crash test and a further two points in the pole test.



Offset crash test at 64km/h

FRONTAL OFFSET CRASH TEST

Body region scores out of 4 points each: Head/neck 4 pts, chest 3.01 pts, upper legs 4 pts, lower legs 3.30 pts.

The passenger compartment held its shape well in the offset crash test. The clutch pedal moved rearwards by 90 mm and upwards 83 mm. The steering wheel hub moved 4 mm rearward, 27 mm upward and 4 mm sideways. The front ("A") pillar moved 27 mm rearwards. All doors remained closed during the crash.

The airbag cushioned the head of the driver and contact was stable. There were no knee hazards. The passenger's head was cushioned by the airbag.

SIDE IMPACT CRASH TEST

Body region scores out of 4 points each: Head 4 pts, chest 4 pts, abdomen 4 pts, pelvis 4 pts.

The side impact test simulates a small car striking the driver's door of the vehicle under test. It is based on a regulation test but the regulation does not apply to vehicles with a high seat height like the Captiva. Experience shows that such vehicles can be expected to perform well in this test and the Captiva scored full marks.

The vehicle was eligible for a pole impact test, since it had head-protecting side airbags. The vehicle earned the maximum two points in this test.

PEDESTRIAN PROTECTION: Marginal

The front edge of the bonnet provided uniformly poor protection to pedestrians. In most areas likely to be struck by a child's head, the bonnet provided good protection. However, predominantly poor protection was provided in those areas likely to be struck by an adult's head.

PEDESTRIAN PROTECTION	Child head impacts	10.
MARGINAL	Adult head impacts	3.99
	Upper leg impacts	Zero
	Lower leg impacts	3.34
	Total (out of 36)	17.33
Tested by Euro NCAP v5.3		



NOVEMBER 2011

PO Box 4041
Manuka ACT 2603
captiva11.doc
Issued 4/11/2011



ANCAP

Crash testing for safety
AUSTRALASIAN
NEW CAR ASSESSMENT
PROGRAM

TECHNICAL DATA - HOLDEN CAPTIVA SERIES 2 - From 2011

INJURY MEASUREMENTS

Body region	Offset Crash Test at 64km/h (v5.1)		Side Impact Crash Test at 50km/h (v5.1)
	Driver	Passenger	Driver
Head HIC	511	290	10
Acceleration (g for 3ms)	54.2	41.2	11.4
Neck - Shear (kN)	0.37	0.67	-
Tension (kN)	1.40	1.05	-
Extension (Nm)	10.2	11.6	-
Chest Accln (g for 3ms)	-	-	-
Compression (mm)	28.91	24.53	11.57
Viscous criterion (m/s)	0.08	0.11	0.05
Abdomen - Force (kN)	-	-	0.260
Pelvis - Force (kN)	-	-	0.750
Upper legs Force (kN)			
Left	0.46	0.90	
Right	0.25	3.20	
Knee displ (mm)			
Left	0.60	2.90	
Right	0.50	5.80	
Lower legs Force (kN)			
Left	2.00	1.76	
Right	1.96	2.16	
Index (Upper/Low)			
Left	0.37 /0.30	0.42 /0.20	
Right	0.29 /0.25	0.36/0.38	

Bonus points (maximum 5)

Pole Test: 2 pts

Seat belt reminders: 2 (see table below for details)

Modifiers - deductions from offset test scores

Head	No deduction
Chest	No deduction
Upper leg Variable & conc. loading	No deduction
Lower leg	No deduction
Foot score	Blocked clutch pedal
	Score 3.78 points

Modifiers - deductions from side impact test scores

Chest	No deduction
-------	--------------

Safety features

These specifications are subject to change. Please check with manufacturer for the latest specifications.



Driver airbag	S	Antilock (ABS) brakes / Electronic brake distribution / Brake Assist	S/S/S
Passenger front airbag	S	Electronic stability control (ESC, VSC, DSC, ESP, VSA)	S#
Side airbags, front seats - chest protection	S	3 point seat belt for all forward-facing seats	S
Side airbags, front seats - head protection	S	Whiplash protection (RCAR protocol)	Pending
Side airbags, rear seats - head protection	S	Intelligent seat belt reminder - driver	S
Driver knee airbag	X	Intelligent seat belt reminder - front passenger	S
Seat belt pretensioners (Front/Rear outboard)	S/X	Intelligent seat belt reminder - rear seats	X

Key:

S = standard on all variants

O = optional on base variant. May be standard on higher variants

V= not available on base variant but standard or optional on higher variants

X = not available on any variant

ESC required by ANCAP for 5 star rating from 2008