

Crash Test Results

New Car Safety

HOLDEN CAPTIVA (LHD)

2006 on Dual front airbags + side curtains



Offset crash test at 64km/h



ANCAP

Rated ★★★★★

Occupant Protection

Occupant Protection Score 31.23 out of 37

Variant: LHD

Eng: 2.4 litre

Kerb weight: 1905 kg

Category: 4WD

Vehicles built: 2006

Important note: The *left-hand-drive* European model with *side curtains* was tested by Euro NCAP. Australasian specifications may vary and therefore models sold in Australasia might provide different levels of protection to those described on this page.

Model History and Safety Features

The tested model of the Holden Captiva was introduced in Australia during 2006.

Dual front airbags and head-protecting side curtains are standard equipment. Antilock brakes (ABS), electronic brake distribution (EBD) and electronic stability control (ESC) are also standard. Intelligent seat belt reminders are fitted to both front seats.

The front seat belt buckles are mounted on the seats and the upper anchorages are adjustable. These features improve the fit of the seat belt. Pre-tensioners are fitted to the front seat belts to reduce slack in the event of a crash. A three point seat belt is fitted to the centre rear seat. This provides better protection than a two point (lap) seat belt.

OCCUPANT PROTECTION: 4 Stars

The Holden Captiva scored 12.23 out of 16 in the offset crash test. The passenger compartment held its shape well. Protection from serious leg injury was marginal for the driver and passenger.

The vehicle scored 16 out of 16 in the side impact crash test and 1 point in the optional pole test.

FRONTAL OFFSET CRASH TEST (v4.1)

Body region scores out of 4 points each: Head/neck 4 pts, chest 2.85 pts, upper legs 2 pts, lower legs 3.38 pts.

The passenger compartment held its shape well in the offset crash test. The brake pedal moved rearwards by 97 mm. The clutch pedal moved upwards 34 mm. The steering wheel hub moved forwards 9mm, upwards 29 mm and sideways 6 mm. The front ("A") pillar moved 37 mm rearwards. All doors remained closed during the crash. After the crash extreme hand force was required to open the driver's door.


The airbag cushioned the head of the driver and contact was stable. Dash/fascia components were a potential source of injury for the driver and passenger knees. The passenger's head was cushioned by the airbag.

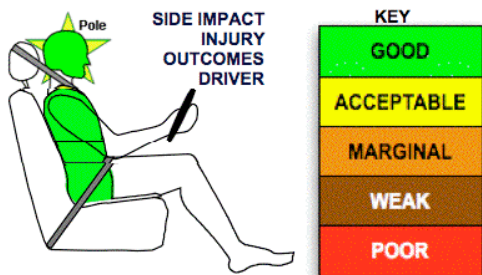
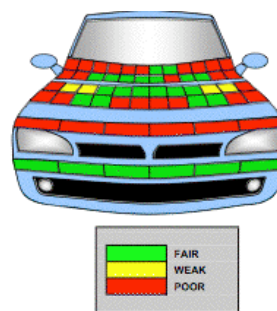
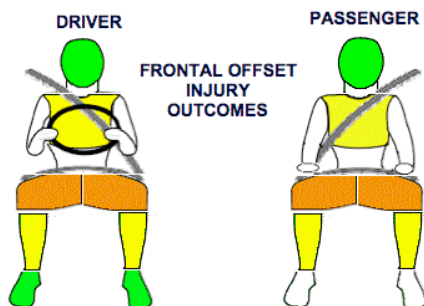
SIDE IMPACT CRASH TEST (v4.1)

Body region scores out of 4 points each: Head 4 pts, chest 4 pts, abdomen 4 pts, pelvis 4 pts.

The vehicle was eligible for an optional pole impact test, since it had head-protecting side airbags and scored four points for the head in the side impact test. The manufacturer decided to go ahead with the pole test. The curtain did not deploy fully and the vehicle earned one point out of two.

PEDESTRIAN PROTECTION RATING (v4.1)

PEDESTRIAN PROTECTION		
 ANCAP Rated ★★★★★	Child head impacts	6.27
	Adult head impacts	4.5
	Upper leg impacts	Zero
	Lower leg impacts	6
	Total (out of 36)	16.77



June 2007

PO Box 1555
 Canberra ACT
 Australia 2601
 captiva06.doc
 Issued 7/6/07



ANCAP

Crash testing for safety
 AUSTRALASIAN
 NEW CAR ASSESSMENT
 PROGRAM

TECHNICAL DATA - HOLDEN CAPTIVA(LHD) - 2006 on

INJURY MEASUREMENTS

Body region	Offset Crash Test at 64km/h (v4.1)		Side Impact Crash Test at 50km/h (v)
	Driver	Passenger	Driver
Head HIC	591	210	42
Acceleration (g for 3ms)	58.4	39.4	25.2
Neck - Shear (kN)	0.61	0.43	-
Tension (kN)	1.54	0.99	-
Extension (Nm)	10.0	19.4	-
Chest Accln (g for 3ms)	-	-	-
Compression (mm)	30.02	22.74	20.44
Viscous criterion (m/s)	0.12	0.09	0.19
Abdomen - Force (kN)	-	-	0.500
Pelvis - Force (kN)	-	-	0.930
Upper legs Force			
Left (kN)	0.81	3.49	
Right (kN)	3.00	1.48	
Knee displ (mm)			
Left	0.00	3.50	
Right	0.00	0.00	
Lower legs Force			
Left (kN)	1.87	2.93	
Right (kN)	1.51	2.27	
Index (Upper/Low)			
Left	0.46 /0.26	0.38 /0.19	
Right	0.42 /0.39	0.31/0.2	

Bonus points (maximum 5)

Pole Test: 1

Seat belt reminders: 2 (see table below for details)

Modifiers - deductions from offset test scores

Head	No deduction
Chest	No deduction
Upper leg Variable & conc. loading for driver and passenger	2 pt deduction Left & Right
Lower leg	No deduction
Foot score	Score 4 points

Modifiers - deductions from side impact test scores

Chest (side impact test)	No deduction
Pole test Curtain did not fully deploy	1 pt deduction

Safety features

These specifications are subject to change. Please check with manufacturer for the latest specifications.

Driver airbag	S	Antilock (ABS) brakes / Electronic brake distribution	S/S
Passenger front airbag	S	Electronic stability control (ESC, VSC, DSC, ESP, VSA)	S
Side airbags, front seats - chest protection	X	3 point centre rear seat belt	S
Side airbags. front seats - head protection	S	Active head restraints - front seats	
Side airbags. rear seats - head protection	S	Intelligent seat belt reminder - driver	S
Driver knee airbag	X	Intelligent seat belt reminder - front passenger	S
Front seat belt pretensioners	S	Rear seat belt status indicator	X

Key:

S = standard on all variants

O = optional on base variant. May be standard on higher variants

V= not available on base variant but standard or optional on higher variants

X = not available on any variant

