

Crash Test Results

New Car Safety

HOLDEN COLORADO SINGLE/SPACE CAB

From June 2012 Front+side curtain airbags



Offset crash test at 64km/h (Colorado Crew cab)



ANCAP
Safety ★★★★★

**Safety
Rating**

Occupant Protection Score 29.20 out of 37

Tested variant: LX 4x2 Single cab Eng: 2.8 diesel

Kerb mass: 1700 kg Category: UTILITY

Vehicles built: 2012

Important note. ANCAP conducted crash tests of the crew cab (dual cab) variant of the Colorado. Holden provided ANCAP with technical information about the crash performance of the single cab and space cab variants and this rating is based partly on that information.

Model History and Safety Features

This model of Holden Colorado was introduced in Australia in June 2012. This 4 star safety rating applies to all variants of the single cab and space cab Colorados. A separate rating is available for the crew cab variant.

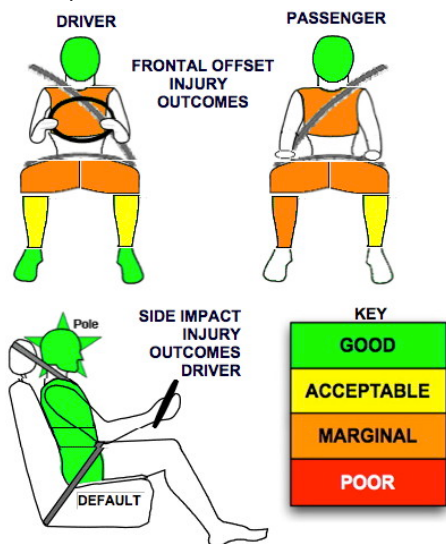
Dual front airbags and head-protecting side curtains are standard equipment. Antilock brakes (ABS), electronic brake distribution (EBD) and electronic stability control (ESC) are also standard. An advanced seat belt reminder is fitted to the driver seat.

Single pretensioners are fitted to the front seat belts to reduce slack in the event of a crash. The crew cab variant has dual pretensioners.

OCCUPANT PROTECTION: 4 Stars

The Colorado scored 10.20 out of 16 in the offset crash test. The passenger compartment held its shape well. Protection from serious chest and leg injury was marginal for the driver and passenger.

The vehicle was awarded a default score of 16 out of 16 in the side impact crash test. A further 2 points were scored in the side pole test.



FRONTAL OFFSET CRASH TEST

Body region scores out of 4 points each: Head/neck 4 pts, chest 1.98 pts, upper legs 2 pts, lower legs 2.22 pts.

The passenger compartment held its shape well in the offset crash test. The accelerator pedal moved rearwards by 49 mm and upwards 4 mm. The steering wheel hub moved 2 mm rearward and 20 mm upward. The front ("A") pillar moved 2 mm rearwards. All doors remained closed during the crash.

In the ANCAP crash test of the crew cab variant the occupant restraint system prevented any knee contacts and no deductions were applied. The single and space cab variants had increased risk of knee injury due to the knees making contact with dash and steering column components and so deductions were applied.

SIDE IMPACT CRASH TEST

The side impact test normally used by ANCAP simulates a small car striking the driver's door of the vehicle under test. Experience shows that large vehicles like the Colorado can be expected to perform well in this test so ANCAP has decided to award a full score of 16 for these vehicles instead of conducting a crash test.

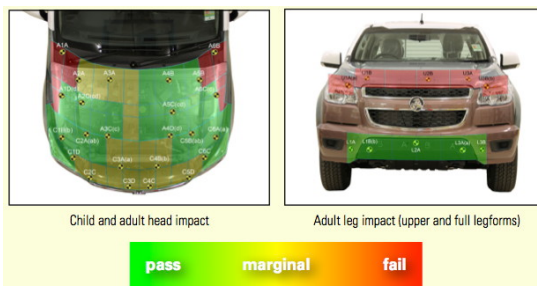
The vehicle scored the maximum two points in the pole side impact test.

PEDESTRIAN PROTECTION: Acceptable

The leading edge of the bonnet was poor. The bumper and most of the head impact zones of bonnet scored well.

PEDESTRIAN PROTECTION	Child head impacts	7.48
ACCEPTABLE	Adult head impacts	8.27
	Upper leg impacts	Zero
	Lower leg impacts	6
	Total (out of 36)	21.75

v5.3 (Crew cab tested)



OCTOBER 2012

PO Box 4041

Manuka ACT 2603

colorado12s.doc Rated: 2012

Issued 8/10/2012



ANCAP

Crash testing for safety

AUSTRALASIAN
NEW CAR ASSESSMENT
PROGRAM

www.ancap.com.au

TECHNICAL DATA - HOLDEN COLORADO SINGLE/SPACE CAB - From 2012

INJURY MEASUREMENTS

Body region	Offset Crash Test at 64km/h (v5.1)		Side Impact Crash Test at 50km/h (v5.1)
	Driver	Passenger	Driver
Head HIC	565	552	Default score awarded
Acceleration (g for 3ms)	58.6	54.9	
Neck - Shear (kN)	0.29	0.53	
Tension (kN)	1.75	0.55	
Extension (Nm)	12.3	16.6	
Chest Accln (g for 3ms)	-	-	
Compression (mm)	36.16	31.41	
Viscous criterion (m/s)	0.15	0.12	
Abdomen - Force (kN)	-	-	
Pelvis - Force (kN)	-	-	
Upper legs Force (kN)			
Left	0.30	0.03	
Right	0.33	0.05	
Knee displ (mm)			
Left	0.40	0.60	
Right	0.00	0.70	
Lower legs Force (kN)			
Left	1.54	1.55	
Right	2.26	2.47	
Index (Upper/Low)			
Left	0.57 /0.22	0.46 /0.34	
Right	0.46 /0.27	0.71/0.8	

Bonus points (maximum 5)

Pole Test: 2 pts

Seat belt reminders: 1 (see table below for details)

Modifiers - deductions from offset test scores

Head No deduction
 Chest No deduction
 Upper leg Variable & conc. loading 2 pt deduction Left & Right
 for driver and passenger

Lower leg No deduction
 Foot score Score 4 points

Note: Steering column and pedal movements are measured relative to the driver's seat.

Modifiers - deductions from side impact test scores

Chest Default score awarded

Safety features

These specifications are subject to change. Please check with manufacturer for the latest specifications.

Driver airbag	S	Antilock (ABS) brakes / Electronic brake distribution / Brake Assist	S/S/S
Passenger front airbag	S	Electronic stability control (ESC, VSC, DSC, ESP, VSA)	S#
Side airbags, front seats - chest protection	X	3 point seat belt for all forward-facing seats	S
Side airbags, front seats - head protection	S	Whiplash rating (RCAR protocol)	Not rated
Side airbags, rear seats - head protection	S	Intelligent seat belt reminder - driver	S
Driver knee airbag	X	Intelligent seat belt reminder - front passenger	V*
Seat belt pretensioners (Front/rear outboard)	S/X	Intelligent seat belt reminder - rear seats	X

Key * Standard on crew cab, not available on single cab and space cab

S = standard on all variants

O = optional on base variant. May be standard on higher variants

V= not available on base variant but standard or optional on higher variants

X = not available on any variant

ESC required by ANCAP for 5 star rating from 2008



ANCAP

Crash testing for safety

AUSTRALASIAN
NEW CAR ASSESSMENT
PROGRAM

www.ancap.com.au