

# Crash Test Results

## New Car Safety

### GREAT WALL MOTORS X240

2009 on

Dual front airbags



**ANCAP** Occupant Protection  
Rated ★★★★★

**Occupant Protection Score 25.48 out of 37**

Variant: - Eng: 2.4 litre petrol  
Kerb weight: 1800 kg Category: 4WD - LARGE  
Vehicle built: 2010

#### Model History and Safety Features

The tested model of Great Wall Motor X240 was introduced in Australia during 2009.

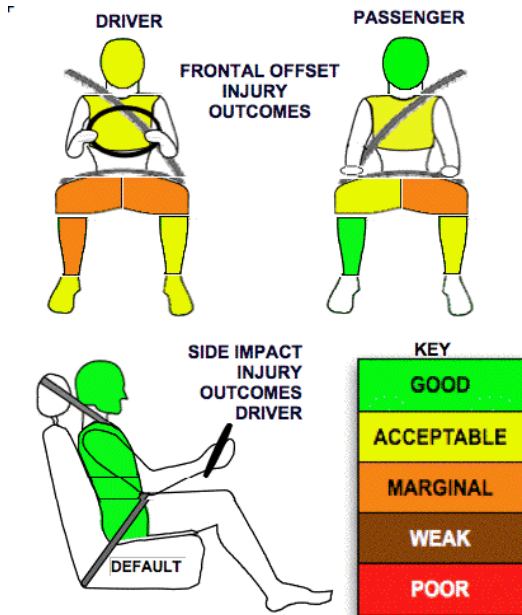
Dual front airbags and antilock brakes (ABS) with Electronic Brake Distribution (EBD) are standard. Electronic stability control (ESC) is not available. No advanced seat belt reminders are fitted.

Pretensioners are fitted to the front seat belts to reduce slack in the event of a crash. A three point seat belt is fitted to the centre rear seat. This provides better protection than a two point (lap) seat belt.

#### OCCUPANT PROTECTION: 4 Stars

The X240 scored 9.48 out of 16 in the offset crash test. The passenger compartment held its shape reasonably well. Protection from serious leg injury was marginal for the driver. There was a slight risk of serious chest injury for the driver and passenger.

The vehicle was awarded a default score of 16 out of 16 in the side impact crash test.



Offset crash test at 64km/h

#### FRONTAL OFFSET CRASH TEST (v4.2)

Body region scores out of 4 points each: Head/neck 3.39 pts, chest 2.76 pts, upper legs 1.92 pts, lower legs 1.42 pts.

The passenger compartment held its shape reasonably well in the offset crash test. The brake pedal moved rearwards by 61 mm and upwards 23 mm. The steering wheel hub moved 22 mm rearward, 44 mm upward and 14 mm sideways. The front ("A") pillar moved 2 mm rearwards. All doors remained closed during the crash. After the crash the driver's door could be opened with high manual effort.

The airbag cushioned the head of the driver and contact was stable. Steering column and dash components were a potential source of injury for the driver's knees. The passenger's head was cushioned by the airbag. Dash and centre console components were knee hazards for the passenger.

#### SIDE IMPACT CRASH TEST (v4.2)

Default 16 points awarded for side impact test.

The side impact test normally used by ANCAP simulates a small car striking the driver's door of the vehicle under test. It is based on a regulation test but the regulation does not apply to vehicles with a high seat height like the X240. Experience shows that such vehicles can be expected to perform well in this test so ANCAP has decided to award full score for these vehicles instead of conducting a crash test.

#### PEDESTRIAN PROTECTION: Poor

All test points except the centre of the bonnet were poor.

PEDESTRIAN PROTECTION	Child head impacts	0.45
<b>POOR</b>	Adult head impacts	3.21
	Upper leg impacts	Zero
	Lower leg impacts	Zero
	Total (out of 36)	3.66



April 2010

PO Box 4041  
Manuka ACT 2603  
X240\_09.DOC  
Revised 28/7/2010



**ANCAP**  
Crash testing for safety  
AUSTRALASIAN  
NEW CAR ASSESSMENT  
PROGRAM

# TECHNICAL DATA - GREAT WALL MOTORS X240 - 2009 on

## INJURY MEASUREMENTS

Body region	Offset Crash Test at 64km/h (v4.2)		Side Impact Crash Test at 50km/h (default)
	Driver	Passenger	Driver
<b>Head HIC</b>	506	356	Default Score awarded
Acceleration (g for 3ms)	57.0	47.4	
<b>Neck - Shear (kN)</b>	0.52	0.71	
Tension (kN)	2.01	1.36	
Extension (Nm)	44.3	21.7	
<b>Chest Accln (g for 3ms)</b>	50.500	32.100	
Compression (mm)	30.70	29.20	
Viscous criterion (m/s)	0.16	0.14	
<b>Abdomen - Force (kN)</b>	-	-	
<b>Pelvis - Force (kN)</b>	-	-	
<b>Upper legs Force (kN)</b>			
Left	2.53	0.44	
Right	0.97	2.38	
Knee displ (mm)			
Left	6.19	0.98	
Right	5.01	1.04	
<b>Lower legs Force (kN)</b>			
Left	1.16	2.39	
Right	4.38	1.84	
Index (Upper/Low)			
Left	0.44 /0.29	0.27 /0.19	
Right	0.98 /0.48	0.34/0.32	

### Bonus points (maximum 5)

Pole Test: Not eligible

Seat belt reminders: None

### Modifiers - deductions from offset test scores

Head No deduction  
 Chest No deduction  
 Upper leg Variable & conc. loading 2 pt deduction left & right driver  
 2 pt deduction left, 1 pt right passenger  
 Lower leg No deduction  
 Foot score Footwell rupture Score 3 points

Note: Steering column and pedal movements are measured relative to the driver's seat.

### Modifiers - deductions from side impact test scores

Default score awarded

### Safety features

These specifications are subject to change. Please check with manufacturer for the latest specifications.



Driver airbag	S	Antilock (ABS) brakes / Electronic brake distribution / Brake Assist	S/S/X
Passenger front airbag	S	Electronic stability control (ESC, VSC, DSC, ESP, VSA)	X#
Side airbags, front seats - chest protection	X	3 point centre rear seat belt	S
Side airbags, front seats - head protection	X	Active head restraints - front seats	X
Side airbags, rear seats - head protection	X	Intelligent seat belt reminder - driver	X
Driver knee airbag	X	Intelligent seat belt reminder - front passenger	X
Seat belt pretensioners (Front/rear outboard)	S/X	Intelligent seat belt reminder - rear seats	X

Key:

S = standard on all variants

O = optional on base variant. May be standard on higher variants

V= not available on base variant but standard or optional on higher variants

X = not available on any variant

# ESC required by ANCAP for 5 star rating from 2008