

# Crash Test Results

## New Car Safety

### GREAT WALL MOTORS V240

2009 on

Dual front airbags



Offset crash test at 64km/h



**ANCAP**

Rated ★★☆☆☆

**Occupant Protection**

**Occupant Protection Score 16.49 out of 37**

Variant: DUAL CAB 4x2

Eng: 2.4

Kerb weight: 1660 kg

Category: UTILITY

Vehicles built: Apr 09

#### Model History and Safety Features

The tested model of Great Wall Motors V240 was introduced in Australia during 2009.

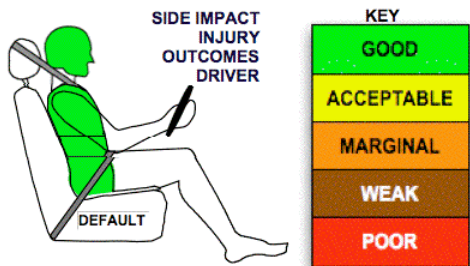
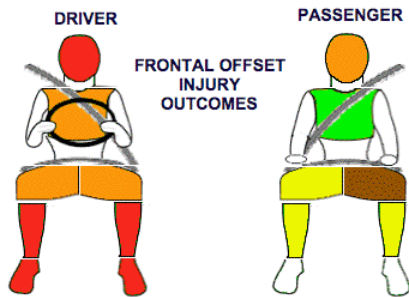
Dual front airbags and antilock brakes (ABS) are standard. Electronic stability control (ESC) is not available. There are no advanced seat belt reminders.

There are no approved top tether anchorages for child restraints so this vehicle is unsuitable for transporting young children.

#### OCCUPANT PROTECTION: 2 Stars

The V240 scored 2.36 out of 16 in the offset crash test. The passenger compartment did not hold its shape well. Protection from serious head and leg injury was poor for the driver. There was marginal protection for the head of the passenger and chest of the driver. The passenger seat belt failed during the offset crash test. Even if the passenger results had been better the driver's score would have still limited the V240 to a 2-star rating.

The vehicle was awarded a default score of 16 out of 16 in the side impact crash test. However, the low offset score meant that the vehicle was limited to a 2 star rating and an overall score of 16.49 (the maximum available for a 2 star rating).



#### FRONTAL OFFSET CRASH TEST (v4.1)

Body region scores out of 4 points each: Head/neck zero pts, chest 1.67 pts, upper legs 0.69 pts, lower legs zero pts.

The passenger compartment did not hold its shape well in the offset crash test. The accelerator pedal moved rearwards by 202 mm and upwards 120 mm. The steering wheel hub moved 91 mm rearward, 137 mm upward and 20 mm sideways. The front ("A") pillar moved 72 mm rearwards. All doors remained closed during the crash. After the crash the high manual effort was required to open driver's door.

The driver airbag deployed but failed to prevent the driver's head from striking the steering wheel. Steering column components were a potential source of injury for the driver's knees. The passenger's airbag deployed but, near the peak of the crash, the seat belt retractor failed allowing the seat belt webbing to reel out and the airbag could not prevent the passenger's head from striking the dash. The manufacturer is investigating the cause of the seat belt failure. Dash components were a potential source of injury for the passenger's knees.


#### SIDE IMPACT CRASH TEST

Default 16 points awarded for side impact test.

The side impact test normally used by ANCAP simulates a small car striking the driver's door of the vehicle under test. It is based on a regulation test but the regulation does not apply to vehicles with a high seat height like the V240. Experience shows that such vehicles can be expected to perform well in this test so ANCAP has decided to award full score for these vehicles instead of conducting a crash test.

#### PEDESTRIAN PROTECTION: Zero Stars

The V240 was poor for all test locations.

PEDESTRIAN PROTECTION		
 <p>Rated ★★☆☆☆</p> <p>v4.1</p>	Child head impacts	Zero
	Adult head impacts	Zero
	Upper leg impacts	Zero
	Lower leg impacts	Zero
	Total (out of 36)	Zero



September 2009

PO Box 4041

Manuka ACT 2603

v240\_09.doc

Issued 21/9/2009



**ANCAP**

Crash testing for safety

AUSTRALASIAN  
NEW CAR ASSESSMENT  
PROGRAM

www.ancap.com.au

# TECHNICAL DATA - Great Wall Motors V240 - 2009 on

## INJURY MEASUREMENTS

Body region	Offset Crash Test at 64km/h (v4.1)		Side Impact Crash Test at 50km/h (v)
	Driver	Passenger	Driver
<b>Head HIC</b>	697	661	0
Acceleration (g for 3ms)	81.6	77.3	0.0
<b>Neck - Shear (kN)</b>	0.64	2.11	-
Tension (kN)	2.13	1.41	-
Extension (Nm)	33.8	16.3	-
<b>Chest Accln (g for 3ms)</b>	39.800	59.400	-
Compression (mm)	31.30	16.00	0.00
Viscous criterion (m/s)	0.12	0.08	0.00
<b>Abdomen - Force (kN)</b>	-	-	0.000
<b>Pelvis - Force (kN)</b>	-	-	0.000
<b>Upper legs Force (kN)</b>			
Left	1.12	3.46	
Right	3.75	3.66	
Knee displ (mm)			
Left	0.10	8.95	
Right	1.14	6.40	
<b>Lower legs Force (kN)</b>			
Left	6.51	2.33	
Right	12.08	1.54	
Index (Upper/Low)			
Left	0.71 /0.87	0.63 /0.60	
Right	1.98 /0.76	0.51/0.25	

### Bonus points (maximum 5)

Pole Test: Not eligible

Seat belt reminders: None

### Modifiers - deductions from offset test scores

Head	Airbag bottomed out, str column displacement	2 pt deduction
Chest	Loss of cabin structure	1 pt deduction
Upper leg	Variable & conc. loading	2 pt deduction L & R
	Driver	2pt L, 1 pt R
	Passenger	1 pt deduction
Lower leg	Pedal upward displacement	Score zero points
Foot score	Pedal rearward displacement	Score zero points

Note: Steering column and pedal movements are measured relative to the driver's seat.

### Modifiers - deductions from side impact test scores

Default score awarded

### Safety features

These specifications are subject to change. Please check with manufacturer for the latest specifications.

Driver airbag	S	Antilock (ABS) brakes / Electronic brake distribution / Brake Assist	S/X/X
Passenger front airbag	S	Electronic stability control (ESC, VSC, DSC, ESP, VSA)	X#
Side airbags, front seats - chest protection	X	3 point centre rear seat belt	X
Side airbags, front seats - head protection	X	Active head restraints - front seats	X
Side airbags, rear seats - head protection		Intelligent seat belt reminder - driver	X
Driver knee airbag	X	Intelligent seat belt reminder - front passenger	X
Seat belt pretensioners (Front/rear outboard)	X/X	Rear seat belt status indicator	X

Key:

S = standard on all variants

O = optional on base variant. May be standard on higher variants

V= not available on base variant but standard or optional on higher variants

X = not available on any variant

# ESC required by ANCAP for 5 star rating from 2008

