

Crash Test Results

New Car Safety

FORD MONDEO (LHD)

2007 on Front+side+head airbags



Offset crash test at 64km/h



ANCAP Occupant Protection
Rated ★★★★★

Occupant Protection Score 35.13 out of 37

Tested variant: 5 dr hatch Eng: 2 litre Diesel

Kerb weight: 1600 kg Category: LARGE CAR/MPV

Vehicles built: 2007 Tested by Euro NCAP

Important note: The *diesel left-hand-drive* European model was tested by Euro NCAP. Australasian specifications may vary and therefore models sold in Australasia might provide different levels of protection to those described on this page.

Model History and Safety Features

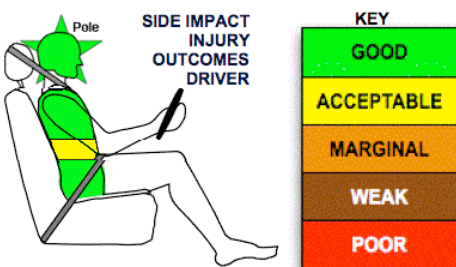
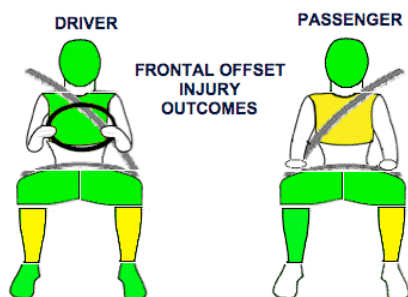
The tested model of Ford Mondeo was introduced in Australia during 2007. This updated ANCAP rating applies to all Mondeo variants, including the wagon and all engines.

Dual front airbags, side airbags, head-protecting side curtains and a driver knee airbag are standard equipment. Antilock brakes (ABS), electronic brake distribution (EBD) and electronic stability control (ESC) are also standard. Intelligent seat belt reminders are fitted to both front seats.

Pretensioners are fitted to the front seat belts to reduce slack in the event of a crash. A horizontally stroking steering column is designed to reduce injury risk. A three point seat belt is fitted to the centre rear seat. This provides better protection than a two point (lap) seat belt.

OCCUPANT PROTECTION: 5 Stars

The Ford Mondeo scored 15.32 out of 16 in the offset crash test. The passenger compartment held its shape well. There was a slight risk of serious chest injury for the passenger. The vehicle scored 15.81 out of 16 in the side impact crash test. There was a slight risk of serious abdomen injury for the driver. A further two points were earned in the optional pole test.



FRONTAL OFFSET CRASH TEST (v4.1)

Body region scores out of 4 points each: Head/neck 4 pts, chest 3.72 pts, upper legs 4 pts, lower legs 3.60 pts.

The passenger compartment held its shape well in the offset crash test. The accelerator pedal moved rearwards by 35 mm and upwards 5 mm. The steering wheel hub moved 73mm forward, 6mm downward 6mm and 9mm sideways. The front ("A") pillar moved 6 mm rearwards. All doors remained closed during the crash. After the crash all doors opened with normal effort

The airbag cushioned the head of the driver and contact was stable. There were no knee hazards. The passenger's head was cushioned by the airbag.


SIDE IMPACT CRASH TEST (v4.1)

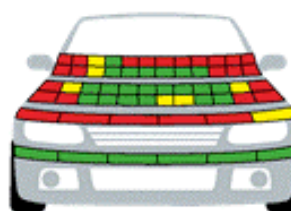
Body region scores out of 4 points each: Head 4 pts, chest 4 pts, abdomen 3.81 pts, pelvis 4 pts.

The vehicle was eligible for an optional pole impact test, since it had head-protecting side airbags and scored four points for the head in the side impact test. The manufacturer decided to go ahead with the pole test and the vehicle earned a further two points.

PEDESTRIAN PROTECTION RATING 2 Stars

The bumper scored maximum points for the protection offered to pedestrians' legs and the bonnet was rated as predominantly fair for its protection of children's heads. However, most of the front edge of the bonnet was rated as poor as was the bonnet in the area where an adult's head might hit.

PEDESTRIAN PROTECTION		
 ANCAP Rated ★★☆☆☆ Tested by Euro NCAP v4.1	Child head impacts	7.59
	Adult head impacts	4.07
	Upper leg impacts	0.01
	Lower leg impacts	6
	Total (out of 36)	17.67



Pedestrian protection

GOOD
ADEQUATE
MARGINAL

November 2007

PO Box 1555

Canberra ACT

Australia 2601

mondeo07.doc

Revised 15/12/2009



ANCAP

Crash testing for safety

AUSTRALASIAN
NEW CAR ASSESSMENT
PROGRAM

TECHNICAL DATA - FORD MONDEO (LHD) - 2007 on

INJURY MEASUREMENTS

Body region	Offset Crash Test at 64km/h (v4.1)		Side Impact Crash Test at 50km/h (v4.1)
	Driver	Passenger	Driver
Head HIC	186	239	39
Acceleration (g for 3ms)	35.0	40.6	22.0
Neck - Shear (kN)	0.30	0.47	-
Tension (kN)	1.02	0.90	-
Extension (Nm)	6.5	15.5	-
Chest Accln (g for 3ms)	-	-	-
Compression (mm)	19.31	23.95	16.74
Viscous criterion (m/s)	0.06	0.08	0.10
Abdomen - Force (kN)	-	-	1.070
Pelvis - Force (kN)	-	-	1.470
Upper legs Force (kN)			
Left	1.01	0.17	
Right	1.40	0.18	
Knee displ (mm)			
Left	0.40	0.10	
Right	0.40	0.30	
Lower legs Force (kN)			
Left	2.44	2.08	
Right	2.37	0.90	
Index (Upper/Low)			
Left	0.49 /0.25	0.41 /0.40	
Right	0.36 /0.20	0.26/0.15	

Bonus points (maximum 5)

Pole Test: 2

Seat belt reminders: 2 (see table below for details)

Modifiers - deductions from offset test scores

Head	No deduction
Chest	No deduction
Upper leg Variable & conc. loading	No deduction
Lower leg	No deduction
Foot score	Score 4 points

Modifiers - deductions from side impact test scores

Chest	No deduction
-------	--------------

Safety features

These specifications are subject to change. Please check with manufacturer for the latest specifications.



Driver airbag	S	Antilock (ABS) brakes / Electronic brake distribution/Emergency Brake Assist	S/S/S
Passenger front airbag	S	Electronic stability control (ESC, VSC, DSC, ESP, VSA)	S#
Side airbags, front seats - chest protection	S	3 point centre rear seat belt	S
Side airbags, front seats - head protection	S	Active head restraints - front seats	S
Side airbags, rear seats - head protection	S	Intelligent seat belt reminder - driver	S*
Driver knee airbag	S	Intelligent seat belt reminder - front passenger	S*
Seat belt pretensioners - front/rear	S/X	Rear seat belt status indicator	X

* Some early Australian build vehicles had a seat belt reminder system that did not fully qualify for the bonus points but this did not affect the five star rating.

Key:

S = standard on all variants

O = optional on base variant. May be standard on higher variants

V= not available on base variant but standard or optional on higher variants

X = not available on any variant

ESC required by ANCAP for 5 star rating from 2008



ANCAP

Crash testing for safety

AUSTRALASIAN
NEW CAR ASSESSMENT
PROGRAM