

Crash Test Results

New Car Safety

FORD MONDEO Mk3 (NZ)

From 2003 to 06 Front+side+head airbags



ANCAP Occupant Protection
Rated ★★★★★

Occupant Protection Score 28.12 out of 37

Variant: LX RHD Eng: 1.8 petrol
Kerb mass 1380 kg Category: CAR - MEDIUM
Vehicles built: 2002 Tested by Euro NCAP

Important note: The European model was tested by Euro NCAP. Australasian specifications may vary and therefore models sold in Australasia might provide different levels of protection to those described on this page.

Model History and Safety Features

The tested model of Ford Mondeo was introduced in New Zealand during 2003. It was superseded in 2007.

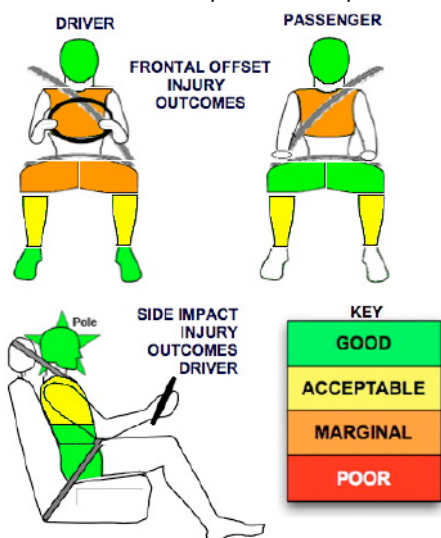
Dual front airbags, side airbags and head-protecting side curtains are standard equipment. Antilock brakes (ABS) are also standard. Electronic stability control (ESC) is optional.

Pretensioners are fitted to the front seat belts to reduce slack in the event of a crash.

OCCUPANT PROTECTION: 4 Stars

The Mondeo scored 10.37 out of 16 in the offset crash test. The passenger compartment lost structural integrity. Protection from serious chest and leg injury was marginal for the driver.

The vehicle scored 15.75 out of 16 in the side impact crash test and a further two points in the pole test.



Offset crash test at 64km/h

FRONTAL OFFSET CRASH TEST

Body region scores out of 4 points each: Head/neck 4 pts, chest 0.63 pts, upper legs 2 pts, lower legs 3.74 pts.

The passenger compartment lost structural integrity in the offset crash test. The accelerator pedal moved rearwards by 52 mm. The brake pedal moved downwards 16mm. The steering wheel hub moved 10mm forward, 22mm downward and 19 mm sideways. The front ("A") pillar moved 64 mm rearwards. All doors remained closed during the crash. After the crash the driver's door could be opened with extreme manual effort.

The airbag cushioned the head of the driver and contact was stable. Steering column components were a potential source of injury for the driver's knees. The passenger's head was cushioned by the airbag.

SIDE IMPACT CRASH TEST

Body region scores out of 4 points each: Head 4 pts, chest 3.75 pts, abdomen 4 pts, pelvis 4 pts.

The vehicle was eligible for a pole impact test, since it had head-protecting side airbags. The vehicle earned the maximum two points in this test.

PEDESTRIAN PROTECTION: Marginal

The bonnet of the Mondeo provided some areas that gave protection to both child and adult heads, but the bonnet leading edge and bumper were very stiff and unforgiving.

PEDESTRIAN PROTECTION	Child head impacts	5.63
MARGINAL	Adult head impacts	7.72
	Upper leg impacts	Zero
	Lower leg impacts	Zero
	Total (out of 36)	13.35
Tested by Euro NCAP v4		

* Based on tests to a previous protocol. Scores might vary under the latest test protocol.

[no picture of pedestrian protection available]

AUGUST 2012

PO Box 4041
Manuka ACT 2603
mondeo03nz.doc Rated: 2003
Issued 15/8/2012



ANCAP

Crash testing for safety

AUSTRALASIAN
NEW CAR ASSESSMENT
PROGRAM

TECHNICAL DATA - FORD MONDEO - From 2003 to 06

INJURY MEASUREMENTS

Body region	Offset Crash Test at 64km/h (v4.1)		Side Impact Crash Test at 50km/h (v4.1)
	Driver	Passenger	Driver
Head HIC	422	249	28
Acceleration (g for 3ms)	50.5	38.7	17.4
Neck - Shear (kN)	0.41	0.46	-
Tension (kN)	1.81	1.01	-
Extension (Nm)	8.5	5.8	-
Chest Accln (g for 3ms)	-	-	-
Compression (mm)	38.59	35.03	23.23
Viscous criterion (m/s)	0.14	0.10	0.21
Abdomen - Force (kN)	-	-	0.770
Pelvis - Force (kN)	-	-	3.000
Upper legs Force (kN)			
Left	1.42	0.13	
Right	0.84	1.57	
Knee displ (mm)			
Left	2.30	0.00	
Right	0.02	4.60	
Lower legs Force (kN)			
Left	2.34	2.09	
Right	2.10	2.39	
Index (Upper/Low)			
Left	0.41 /0.37	0.26 /0.25	
Right	0.41 /0.31	0.42/0.29	

Bonus points (maximum 5)

Pole Test: 2 pts

Seat belt reminders: None (see table below for details)

Modifiers - deductions from offset test scores

Head No deduction
 Chest Loss of structure 1 pt deduction
 Upper leg Variable & conc. loading 2pt deduction Left & Right
 Lower leg No deduction
 Foot score Score 4 points



Modifiers - deductions from side impact test scores

Chest No deduction

Safety features (2003)

These specifications are subject to change. Please check with manufacturer for the latest specifications.

Driver airbag	S	Antilock (ABS) brakes / Electronic brake distribution / Brake Assist	S/S/S
Passenger front airbag	S	Electronic stability control (ESC, VSC, DSC, ESP, VSA)	O#
Side airbags, front seats - chest protection	S	3 point centre rear seat belt	S
Side airbags, front seats - head protection	S	Whiplash protection	Not tested
Side airbags, rear seats - head protection	S	Intelligent seat belt reminder - driver	X
Driver knee airbag	X	Intelligent seat belt reminder - front passenger	X
Seat belt pretensioners (Front/Rear outboard)	S/X	Intelligent seat belt reminder - rear seats	X

Key:

S = standard on all variants

O = optional on base variant. May be standard on higher variants

V = not available on base variant but standard or optional on higher variants

X = not available on any variant

ESC required by ANCAP for 5 star rating from 2008