

Crash Test Results

New Car Safety

FORD FOCUS

From 2011

Front+side+head airbags



Offset crash test at 64km/h



ANCAP Occupant Protection
Rated ★★★★★

Occupant Protection Score 34.17 out of 37

Tested variant: 5 door hatch Eng: 1.6 Diesel

Kerb mass 1344 kg Category: CAR - MEDIUM

Vehicles built: 2011 Tested by Euro NCAP

Important note: The left-hand-drive European model was tested by Euro NCAP. Australasian specifications may vary and therefore models sold in Australasia might provide different levels of protection to those described on this page.

Model History and Safety Features

The tested model of Ford Focus was introduced in Australia during 2011. This ANCAP rating applies to all Focus variants (sedan, hatch and wagon) and all engines.

Dual front airbags, side airbags and head-protecting side curtains are standard equipment. Antilock brakes (ABS), electronic brakeforce distribution (EBD), emergency brake assist and electronic stability control (ESC) are also standard. Intelligent seat belt reminders are fitted to both front seats.

Pretensioners are fitted to the front seat belts to reduce slack in the event of a crash. A three point seat belt is fitted to the centre rear seat. This provides better protection than a two point (lap) seat belt.

OCCUPANT PROTECTION: 5 Stars

The Focus scored 15.04 out of 16 in the offset crash test. The passenger compartment held its shape well. There was a slight risk of serious lower leg injury for the driver.

The vehicle scored 15.13 out of 16 in the side impact crash. There was a slight risk of serious chest injury for the driver. The Focus scored a further two points in the pole test.

FRONTAL OFFSET CRASH TEST

Body region scores out of 4 points each: Head/neck 4 pts, chest 4 pts, upper legs 4 pts, lower legs 3.04 pts.

The passenger compartment held its shape well in the offset crash test. The accelerator pedal moved rearwards by 11 mm and upwards 19 mm. The steering wheel hub moved 86mm forward, 20 mm upward and 1mm sideways. The front ("A") pillar moved 6 mm rearwards. All doors remained closed during the crash.

The airbag cushioned the head of the driver and contact was stable. The passenger's head was cushioned by the airbag.

There were no knee hazards.

SIDE IMPACT CRASH TEST

Body region scores out of 4 points each: Head 4pts, chest 3.24pts, abdomen 4pts, pelvis 3.89pts.

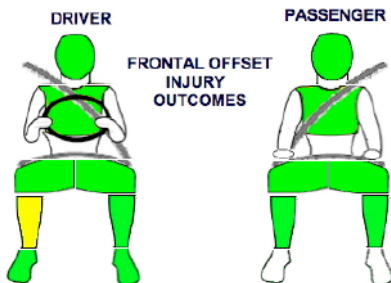
The vehicle was eligible for a pole impact test, since it had head-protecting side airbags. The vehicle earned the maximum two points in this test.

PEDESTRIAN PROTECTION: ACCEPTABLE

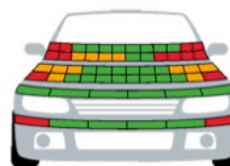
The protection provided by the bumper to the legs of a struck pedestrian was predominantly good. The front edge of the bumper offered good protection in all areas tested. In most areas likely to be struck by a child's head the bonnet offered good protection. While protection of an adult's head was also good in places most areas tested were rated as poor or marginal.

PEDESTRIAN PROTECTION	Child head impacts	9.741
ACCEPTABLE	Adult head impacts	6.222
	Upper leg impacts	6.0
	Lower leg impacts	4.0
	Total (out of 36)	25.96

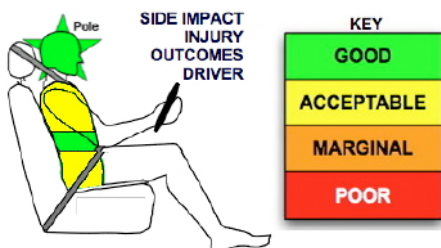
Tested by Euro NCAP v5.2



Whiplash Protection (RCAR Protocol)



■ PASS
■ MARGINAL
■ FAIL



JUNE 2011

PO Box 4041

Manuka ACT 2603

focus11.doc Rated: 2011

Revised 17/8/2012



ANCAP

Crash testing for safety

AUSTRALASIAN
NEW CAR ASSESSMENT
PROGRAM

TECHNICAL DATA - FORD FOCUS - From 2011

INJURY MEASUREMENTS

Body region	Offset Crash Test at 64km/h (v5.2)		Side Impact Crash Test at 50km/h (v5.2)
	Driver	Passenger	Driver
Head HIC	453.49	274.47	47
Acceleration (g for 3ms)	50.96	43.17	20.28
Neck - Shear (kN)	0.81	0.48	-
Tension (kN)	1.38	0.63	-
Extension (Nm)	9.87	13.13	-
Chest Accln (g for 3ms)	-	-	-
Compression (mm)	21.52	19.81	20.43
Viscous criterion (m/s)	0.06	0.06	0.18
Abdomen - Force (kN)	-	-	0.91
Pelvis - Force (kN)	-	-	3.08
Upper legs Force (kN)			
Left	0.58	1.70	
Right	0.04	0.00	
Knee displ (mm)			
Left	0.10	0.20	
Right	0.00	0.00	
Lower legs Force (kN)			
Left	1.54	1.15	
Right	3.44	1.29	
Index (Upper/Low)			
Left	0.32/0.34	0.28/0.16	
Right	0.47/0.22	0.28/0.18	

Bonus points (maximum 5)

Pole Test: 2 pts

Seat belt reminders: 2 (see table below for details)

Modifiers - deductions from offset test scores

Head	No deduction
Chest	No deduction
Driver Upper leg Variable & conc. loading	No deduction
Passn Upper leg Variable & conc. loading	No deduction
Lower leg	No deduction
Foot score	Score 4 points

Modifiers - deductions from side impact test scores

Chest	No deduction
-------	--------------



Safety features

These specifications are subject to change. Please check with manufacturer for the latest specifications.

Driver airbag	S	Antilock (ABS) brakes / Electronic brake distribution / Brake Assist	S/S/S
Passenger front airbag	S	Electronic stability control (ESC, VSC, DSC, ESP, VSA)	S#
Side airbags, front seats - chest protection	S	3 point centre rear seat belt	S
Side airbags, front seats - head protection	S	Whiplash protection (RCAR protocol)	Good
Side airbags, rear seats - head protection	S	Intelligent seat belt reminder - driver	S
Driver knee airbag	X	Intelligent seat belt reminder - front passenger	S
Seat belt pretensioners (Front/Rear outboard)	S/X	Intelligent seat belt reminder - rear seats	X

Key:

S = standard on all variants

O = optional on base variant. May be standard on higher variants

V= not available on base variant but standard or optional on higher variants

X = not available on any variant

ESC required by ANCAP for 5 star rating from 2008