

Crash Test Results

New Car Safety

FORD FOCUS (LHD)

WITH SIDE CURTAIN AIRBAGS & ESC

2009 on Front+side+head airbags*



Offset crash test at 64km/h



ANCAP Occupant
Protection
Rated ★★★★★

Occupant Protection Score 34.46 out of 37

* Safety equipment, as tested, not standard on all variants

Variant: 5 dr hatch Eng: 1.6 litre
Kerb weight: 1250 kg Category: CAR - SMALL
Vehicles built: 2004 Tested by Euro NCAP

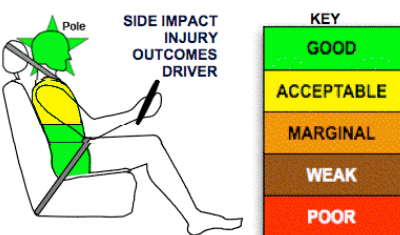
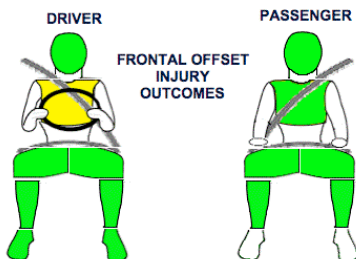
Important note: The *left-hand-drive* European model with side curtains was tested by Euro NCAP. Australasian specifications may vary and therefore models sold in Australasia might provide different levels of protection to those described on this page. Australasian models have 2 or 2.5 litre engines. This updated rating also applies to diesel and sedan variants of the Focus.

Model History and Safety Features

The Ford Focus was introduced in Australia and New Zealand during 2005. Side curtains, as fitted to the tested vehicle, became standard in New Zealand early in 2007. Side (thorax) airbags for both front seats and an intelligent seat belt reminder for the driver became standard on all Australian models from April 2008 with curtains being standard or optional on all Australian variants. The New Zealand Focus has intelligent seat belt reminders for both front seats.

Dual front airbags and antilock brakes (ABS) with electronic brake distribution (EBD) are standard equipment. Electronic stability control and emergency brake assist are now standard or optional on all Australian variants and are standard in New Zealand.

The front seat belt buckles are mounted on the seats and the upper anchorages are adjustable. These features improve the fit of the seat belt. Pre-tensioners are fitted to the front seat belts to reduce slack in the event of a crash. These seat belts also have load limiters. A three point seat belt is fitted to the centre rear seat. This provides better protection than a two point (lap) seat belt.



OCCUPANT PROTECTION: 5 Stars

The Ford Focus scored 15.66 out of 16 in the offset crash test. The passenger compartment held its shape well. There was a slight risk of serious chest injury for the driver.

The vehicle scored 15.80 out of 16 in the side impact crash test and a further two points in the optional pole test.

This is an updated rating that takes into account the availability of ESC. In 2007 ANCAP published a 5-star rating for the curtain-equipped Focus. This was before ANCAP made ESC a requirement for a 5-star rating. Now all curtain-equipped Focus models also have ESC and so meet the latest ANCAP requirements for 5-stars.

FRONTAL OFFSET CRASH TEST (v4.1)

Body region scores out of 4 points each: Head/neck 4 pts, chest 3.66 pts, upper legs 4 pts, lower legs 4 pts.

The passenger compartment held its shape well in the offset crash test. The accelerator pedal moved rearwards by 51 mm. The brake pedal moved downwards 16mm. The steering wheel hub moved forwards 62mm, downwards 39mm and sideways 4mm. The front ("A") pillar moved 15mm rearwards. All doors remained closed during the crash and could be opened with normal effort after the crash. The airbag cushioned the head of the driver and contact was stable. There were no knee hazards.


SIDE IMPACT CRASH TEST (v4.1)

Body region scores out of 4 points each: Head 4 pts, chest 3.80 pts, abdomen 4 pts, pelvis 4 pts.

The vehicle was eligible for an optional pole impact test, since it had head-protecting side airbags and scored four points for the head in the side impact test. The manufacturer decided to go ahead with the pole test and the vehicle earned a further two points.

PEDESTRIAN PROTECTION RATING (v4.1)

Tests on the bonnet showed that it offered good protection where a child's head might most likely strike it. It also protected adult heads, though less well. However, the protection offered at the bonnet's leading edge and by the bumper was poor.

PEDESTRIAN PROTECTION		
 Rated ★★☆☆☆ Tested by Euro NCAP v4.1	Child head impacts	9.41
	Adult head impacts	4
	Upper leg impacts	2
	Lower leg impacts	Zero
	Total (out of 36)	15.41

[No image of pedestrian results available]

June 2009

PO Box 4041
Manuka ACT 2603
focus09c.doc
Revised 14/12/2009



ANCAP

Crash testing for safety

AUSTRALASIAN
NEW CAR ASSESSMENT
PROGRAM

TECHNICAL DATA - FORD FOCUS WITH SIDE CURTAINS & ESC

INJURY MEASUREMENTS

Body region	Offset Crash Test at 64km/h (v4.1)		Side Impact Crash Test at 50km/h (v4.1)
	Driver	Passenger	Driver
Head HIC	280	158	65
Acceleration (g for 3ms)	39.9	31.3	27.9
Neck - Shear (kN)	0.61	0.43	-
Tension (kN)	1.23	0.68	-
Extension (Nm)	14.0	13.3	-
Chest Accln (g for 3ms)	-	-	-
Compression (mm)	24.38	19.83	23.01
Viscous criterion (m/s)	0.07	0.04	0.18
Abdomen - Force (kN)	-	-	0.820
Pelvis - Force (kN)	-	-	1.950
Upper legs Force			
Left (kN)	0.14	1.96	
Right (kN)	0.14	0.36	
Knee displ (mm)			
Left	0.00	1.52	
Right	0.00	0.00	
Lower legs Force			
Left (kN)	1.35	1.62	
Right (kN)	1.49	1.58	
Index (Upper/Low)			
Left	0.35 /0.27	0.19 /0.14	
Right	0.38 /0.20	0.24/0.2	

Bonus points (maximum 5)

Pole Test: 2 points

Seat belt reminders: 1 point in Australia. 2 points in New Zealand (see table below)

Modifiers - deductions from offset test scores

Head	No deduction
Chest	No deduction
Upper leg Variable & conc. loading	No deduction
Lower leg	No deduction
Foot score	Score 4 points

Modifiers - deductions from side impact test scores

Chest	No deduction
-------	--------------

Safety features

These specifications are subject to change. Please check with manufacturer for the latest specifications.



Driver airbag	S	Antilock (ABS) brakes / Electronic brake distribution	S/S/O# (S NZ)
Passenger front airbag	S	Electronic stability control (ESC, VSC, DSC, ESP, VSA)	O (S NZ) #
Side airbags, front seats - chest protection	S	3 point centre rear seat belt	S
Side airbags, front seats - head protection	O# (S NZ)	Active head restraints - front seats	X
Side airbags, rear seats - head protection	O# (S NZ)	Intelligent seat belt reminder - driver	S*
Driver knee airbag	X	Intelligent seat belt reminder - front passenger	X* (S NZ)
Seat belt pretensioners - front/rear outboard	S/X	Rear seat belt status indicator	X

Side curtains, ESC and Brake Assist are part of a safety pack for the Australian CL variant and standard on all other Australian variants. They are standard in New Zealand

* Intelligent seat belt reminders are standard on the driver and front passenger seats in Europe and earned two bonus points from Euro NCAP. From April 2008 the Australian model has an eligible driver seat belt reminder which earns 1 point. New Zealand has both.

Key:

S = standard on all variants

O = optional on base variant. May be standard on higher variants

V= not available on base variant but standard or optional on higher variants

X = not available on any variant

ESC required by ANCAP for 5 star rating from 2008