

# Crash Test Results

## New Car Safety

### FORD FOCUS (LHD)

2007 on

Front+side+head airbags



Offset crash test at 64km/h



**ANCAP** Occupant Protection  
Rated ★★★★★

**Occupant Protection Score 33.46 out of 37**

Variant: 5 dr hatch

Eng: 1.6 litre

Kerb weight: 1250 kg

Category: Small car

Vehicles built: 2004

Tested by Euro NCAP

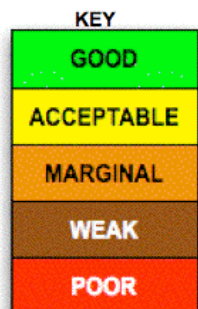
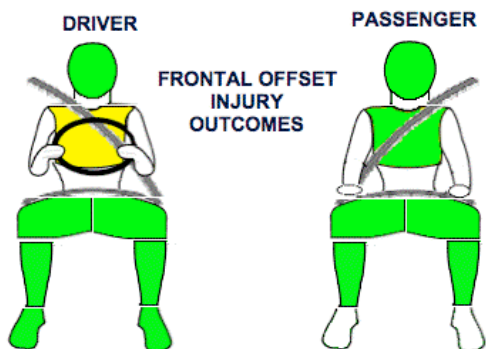
**Important note:** The *left-hand-drive* European model with side curtains was tested by Euro NCAP. Australasian specifications may vary and therefore models sold in Australasia might provide different levels of protection to those described on this page. Australasian models have 2 or 2.5 litre engines.

#### Model History and Safety Features

The Ford Focus was introduced in Australia and New Zealand during 2005. Side curtains, as fitted to the tested vehicle, became standard in New Zealand early in 2007. Curtains are standard on the Australian XR5 variant and became optional on all other Australian variants from mid-2007.

Dual front airbags and antilock brakes (ABS) with electronic brake distribution (EBD) are standard equipment. Electronic stability control is standard or optional on all Australian variants but is only available on the Zetec variant in New Zealand.

The front seat belt buckles are mounted on the seats and the upper anchorages are adjustable. These features improve the fit of the seat belt. Pre-tensioners are fitted to the front seat belts to reduce slack in the event of a crash. These seat belts also have load limiters. A three point seat belt is fitted to the centre rear seat. This provides better protection than a two point (lap) seat belt.



#### OCCUPANT PROTECTION: 5 Stars

The Ford Focus scored 15.66 out of 16 in the offset crash test. The passenger compartment held its shape well. There was a slight risk of serious chest injury for the driver.

The vehicle scored 15.80 out of 16 in the side impact crash test and a further two points in the optional pole test.

#### FRONTAL OFFSET CRASH TEST (v4.1)

*Body region scores out of 4 points each:* Head/neck 4 pts, chest 3.66 pts, upper legs 4 pts, lower legs 4 pts.

The passenger compartment held its shape well in the offset crash test. The accelerator pedal moved rearwards by 51 mm. The brake pedal moved downwards 16mm. The steering wheel hub moved forwards 62mm, downwards 39mm and sideways 4mm. The front ("A") pillar moved 15mm rearwards. All doors remained closed during the crash and could be opened with normal effort after the crash.


The airbag cushioned the head of the driver and contact was stable. There were no knee hazards.

#### SIDE IMPACT CRASH TEST (v4.1)

*Body region scores out of 4 points each:* Head 4 pts, chest 3.80 pts, abdomen 4 pts, pelvis 4 pts.

The vehicle was eligible for an optional pole impact test, since it had head-protecting side airbags and scored four points for the head in the side impact test. The manufacturer decided to go ahead with the pole test and the vehicle earned a further two points.

#### PEDESTRIAN PROTECTION RATING (v4.1)

PEDESTRIAN PROTECTION		
 <b>ANCAP</b> Rated ★★★★★ Tested by Euro NCAP	Child head impacts	9.41
	Adult head impacts	4
	Upper leg impacts	2
	Lower leg impacts	Zero
	Total (out of 36)	15.41

[No image of pedestrian results available]

August 2007

PO Box 1555  
 Canberra ACT  
 Australia 2601  
 focus07.doc  
 Issued 6/8/07



**ANCAP**

Crash testing for safety

AUSTRALASIAN  
 NEW CAR ASSESSMENT  
 PROGRAM

# TECHNICAL DATA - FORD FOCUS (LHD) - 2007 on

## INJURY MEASUREMENTS

Body region	Offset Crash Test at 64km/h (v4.1)		Side Impact Crash Test at 50km/h (v4.1)
	Driver	Passenger	Driver
<b>Head HIC</b>	280	158	65
Acceleration (g for 3ms)	39.9	31.3	27.9
<b>Neck - Shear (kN)</b>	0.61	0.43	-
Tension (kN)	1.23	0.68	-
Extension (Nm)	14.0	13.3	-
<b>Chest Accln (g for 3ms)</b>	-	-	-
Compression (mm)	24.38	19.83	23.01
Viscous criterion (m/s)	0.07	0.04	0.18
<b>Abdomen - Force (kN)</b>	-	-	0.820
<b>Pelvis - Force (kN)</b>	-	-	1.950
<b>Upper legs Force</b>			
Left (kN)	0.14	1.96	
Right (kN)	0.14	0.36	
<b>Knee displ (mm)</b>			
Left	0.00	1.52	
Right	0.00	0.00	
<b>Lower legs Force</b>			
Left (kN)	1.35	1.62	
Right (kN)	1.49	1.58	
<b>Index (Upper/Low)</b>			
Left	0.35 /0.27	0.19 /0.14	
Right	0.38 /0.20	0.24/0.2	

### Bonus points (maximum 5)

Pole Test: 2 pts

Seat belt reminders: None eligible (see table below for details)

### Modifiers - deductions from offset test scores

Head	No deduction
Chest	No deduction
Upper leg Variable & conc. loading	No deduction
Lower leg	No deduction
Foot score	Score 4 points

### Modifiers - deductions from side impact test scores

Chest	No deduction
-------	--------------

### Safety features

These specifications are subject to change. Please check with manufacturer for the latest specifications.



Driver airbag	S	Antilock (ABS) brakes / Electronic brake distribution	S/S
Passenger front airbag	S	Electronic stability control (ESC, VSC, DSC, ESP, VSA)	O (V NZ)
Side airbags, front seats - chest protection	O# (S NZ)	3 point centre rear seat belt	S
Side airbags, front seats - head protection	O# (S NZ)	Active head restraints - front seats	X
Side airbags, rear seats - head protection	O# (S NZ)	Intelligent seat belt reminder - driver	X*
Driver knee airbag	X	Intelligent seat belt reminder - front passenger	X*
Front seat belt pretensioners	S	Rear seat belt status indicator	X

# Standard on XR5 variant. Optional on other variants from mid-2007 in Australia

\* Intelligent seat belt reminders are standard on the driver and front passenger seats in Europe and earned two extra bonus points from Euro NCAP. The seatbelt warning system fitted to Australasian models is different and is not eligible for any bonus points. The vehicle still achieved enough points for a 5 star rating.

Key:

S = standard on all variants

O = optional on base variant. May be standard on higher variants

V= not available on base variant but standard or optional on higher variants

X = not available on any variant