

ANCAP Safety Rating FORD FIESTA (From 2013)



ANCAP
Safety ★★★★★

Test Variant:	Ford Fiesta 5 door hatch
Variant Applicability*:	All variants & all engines
Kerb Mass:	1100 kg
Vehicles Built:	2008
Engine:	1.25 petrol
Category:	SMALL CAR

Note: The left-hand-drive 5-door hatch with 1.25 litre petrol engine was tested by Euro NCAP. ANCAP was provided with information which showed that the Euro NCAP results apply to all Fiesta variants with 7 airbags.



Frontal offset test at 64 km/h (Euro NCAP)

Airbags	ESC	Frontal Offset	Side Impact	Pole	Whiplash	Pedestrian	Seat Belt Reminders	Overall Score	ANCAP Safety Rating
Frontal + Side + Head + Knee	Standard	14.90 (out of 16)	15.55 (out of 16)	2 (out of 2)	PENDING	ACCEPTABLE	2 (out of 3)	34.44 (out of 37)	★★★★★

The Ford Fiesta was introduced in Australia and New Zealand in 2009. This ANCAP safety rating applies to all variants and all engines built from January 2013 when 7 airbags became standard. It includes several model updates being introduced during 2013.

Dual frontal, side chest and side head airbags (curtains) and a driver knee airbag are standard. Antilock brakes (ABS), electronic brake distribution (EBD) and electronic stability control (ESC) are also standard. Advanced seat belt reminders are fitted to both front seats.

In the offset crash test driver chest and leg protection were acceptable. Passenger leg protection was also acceptable. In the side impact crash test driver abdomen protection was acceptable. Head protection in the side pole test was good.

OCCUPANT PROTECTION

Frontal Offset Test.

Each body region is scored out of 4 points

Head / neck:	4.00 points
Chest:	3.51 points
Upper legs:	4.00 points
Lower legs:	3.39 points

The passenger compartment held its shape well in the offset test. Pedal and steering wheel displacements were well controlled. Driver and passenger contact with the airbags was stable. All doors remained closed during the crash. After the crash all doors could be opened with normal effort.

Side Impact Test.

Each body region is scored out of 4 points

Head:	4.00 points
Chest:	4.00 points
Abdomen:	3.55 points
Pelvis:	4.00 points

Mostly good protection was provided for the driver in the side impact test. There was a slight risk of serious abdomen injury for the driver.

Pole Test.

Scored out of 2 points

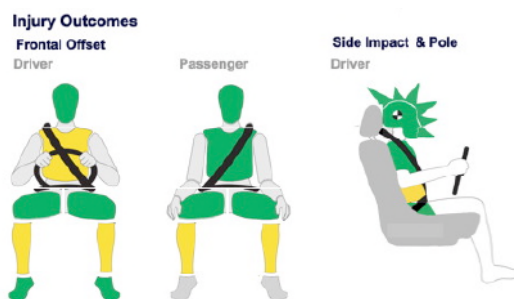
The vehicle was eligible for a side pole test because it has side curtain airbags. The vehicle scored the maximum 2 points for head protection in this test.

Whiplash Protection Test.

Whiplash protection is assessed to the RCAR Protocol

Geometric test:	Pending
Dynamic test:	Pending

Injury Outcomes.



Whiplash

Pending



ANCAP Safety Rating

FORD FIESTA (From 2013)



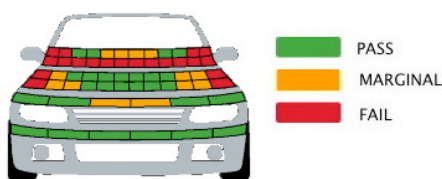
PEDESTRIAN PROTECTION

Pedestrian Test.

Acceptable - Scored 23.32 out of 36 points

Child head impacts: 8.53 points
 Adult head impacts: 3.64 points
 Upper leg impacts: 5.15 points
 Lower leg impacts: 6.00 points

The bumper scored maximum points for the protection it provided to pedestrians' legs. In most areas tested, the front edge of the bonnet also performed well. The bonnet provided predominantly good protection in the areas where a child's head might strike but provided mostly poor protection to the head of an adult.



Ford Fiesta

(Tested by Euro NCAP v5.3)

SAFETY FEATURES (FROM 2013)

These specifications are subject to change. Please check with manufacturer for the latest specifications. For a description of these safety features and safety rating requirements see the ANCAP Road Map.

Safety Assist Technology (SAT)	Availability
Front airbag - driver	S
Front airbag - passenger	S
Side airbags (chest protection) - front seats	S
Side airbags (head protection) - front seats	S
Side airbags (head protection) - 2nd row seats	S
Knee airbag - driver	S
Three-point seat belts for all forward facing seats	S
Seat belt pretensioners (front / rear outboard)	S/X
Intelligent seat belt reminder - driver	S
Intelligent seat belt reminder - front passenger	S
Intelligent seat belt reminder - 2nd row seats	X
Head restraints for all seats	S
Antilock brakes (ABS)	S
Electronic brake distribution (EBD)	S
Emergency brake assist (EBA)	S
Electronic stability control (ESC)	S
Adaptive cruise control (ACC)	X
Autonomous emergency braking (AEB)	X
Lane support system	X

S = Standard on all variants.
 O = Optional on base variant. May be standard on higher variants.
 V = Not available on base variant but standard or optional on higher variants.
 X = Not available on any variant.

INJURY MEASUREMENTS

Body Region	Frontal offset test at 64 km/h (v5.1)		Side impact test at 50 km/h (v5.1)
	Driver	Passenger	Driver
Head			
HIC	304.00	399.00	21.00
Acceleration (g for 3ms)	43.40	49.40	14.60
Neck			
Shear (kN)	0.54	0.34	-
Tension (kN)	1.52	0.98	-
Extension (Nm)	19.50	13.50	-
Chest			
Acceleration (g for 3ms)	-	-	-
Compression (mm)	25.44	19.25	21.80
Viscous criterion (m/s)	0.08	0.06	0.11
Abdomen			
Force (kN)	-	-	1.17
Pelvis			
Force (kN)	-	-	2.40
Upper legs			
Femur force left (kN)	0.83	0.45	
Femur force right (kN)	0.78	0.42	
Knee displacement left (mm)	0.00	0.00	
Knee displacement right (mm)	0.00	0.00	
Lower legs			
Force left (kN)	2.57	2.92	
Force right (kN)	2.30	2.40	
Index (upper / lower) left	0.32 / 0.26	0.33 / 0.37	
Index (upper / lower) right	0.31 / 0.34	0.37 / 0.44	

INTRUSION MEASUREMENTS

Steering Column

Forwards:	65mm
Downwards:	29mm
Sideways:	0mm

Pedals

Accelerator (forwards):	3mm
Clutch (upwards):	41mm
A-Pillar (rearwards):	4mm

SCORE DEDUCTIONS

Deductions from frontal offset test scores

No deductions for offset test

Deductions from side impact test score

No deductions for side impact test.

Deductions from pole test score

No deductions for pole test.

* For information about the application of ANCAP ratings to model variants see the ANCAP Variant Policy. In brief, ratings do not automatically extend to variants that have different body styles, engine configurations, driven wheels or occupant restraint systems (e.g. fewer airbags). In these cases ANCAP considers technical evidence submitted by manufacturers before deciding on extending a rating to additional variants of a model.

^ Refer ANCAP Rating Road Map (www.ancap.com.au/media).

DOCUMENT REF: FIESTA13
 CREATED / REVISED:24/06/2013