

Crash Test Results

New Car Safety

FORD FIESTA (LHD)

2009 on

Dual airbags



Offset crash test at 64km/h

FRONTAL OFFSET CRASH TEST (v4.2)

Body region scores out of 4 points each: Head/neck 4 pts, chest 3.51 pts, upper legs 4 pts, lower legs 3.39 pts.

The passenger compartment held its shape well in the offset crash test. The accelerator pedal moved forwards by 3mm. The clutch pedal moved downwards 41mm. The steering wheel hub moved 65mm forward and 29mm downward. The front ("A") pillar moved 4 mm rearwards. All doors remained closed during the crash. After the crash all doors could be opened with normal effort.

The airbag cushioned the head of the driver and contact was stable. The passenger's head was cushioned by the airbag. The vehicle tested by Euro NCAP had a driver knee airbag but the Fiesta CL and LX do not have this safety feature as standard. ANCAP has applied a 2 point modifier to the driver leg score to take account of the extra risk of injury without the knee airbag


SIDE IMPACT CRASH TEST (ECE Reg 95)

Body region scores out of 4 points each: Head 4 pts, chest 2.47 pts, abdomen 3.25 pts, pelvis 4 pts.

Euro NCAP tested a Fiesta equipped with head-protecting side airbags and so the results do not apply to the base model without side airbags. The crash test is based on ECE Regulation 95 and ANCAP was provided with test data associated with a regulation crash test of the base model Fiesta. The test conditions were found to be consistent with the Euro NCAP test and the injury data from the regulation test were used for this assessment.

PEDESTRIAN PROTECTION: 3 Stars

The bumper scored maximum points for its protection of pedestrians' legs. In most areas where a child's head might strike, the bonnet was rated as fair. However, protection was predominantly poor in those areas around the base of the windscreen likely to be struck by an adult's head.

| PEDESTRIAN PROTECTION | | |
|---|--------------------|-------|
|  ANCAP Rated ★ ★ ★ ★ Tested by Euro NCAP v4.2 | Child head impacts | 8.37 |
| | Adult head impacts | 4 |
| | Upper leg impacts | 2.02 |
| | Lower leg impacts | 6 |
| | Total (out of 36) | 20.39 |



Pedestrian protection

■ GOOD
■ ADEQUATE
■ MARGINAL


ANCAP
Occupant Protection
Rated ★ ★ ★ ★ ★

Occupant Protection Score 28.62 out of 37

Variant: 5 Door hatch

Eng: 1.25 litres

Kerb weight: 1063 kg

Category: SMALL CAR

Vehicles built: 2008

Tested by Euro NCAP & Ford

Important note: The 1.25 litre left-hand-drive European model was tested by Euro NCAP. Australasian specifications may vary and therefore models sold in Australasia might provide different levels of protection to those described on this page.

Model History and Safety Features

The tested model of Ford Fiesta was introduced in Australia during 2009. This 4 star rating applies to the Fiesta CL & LX 5 door hatches without the safety pack. A separate rating is available for the safety pack versions.

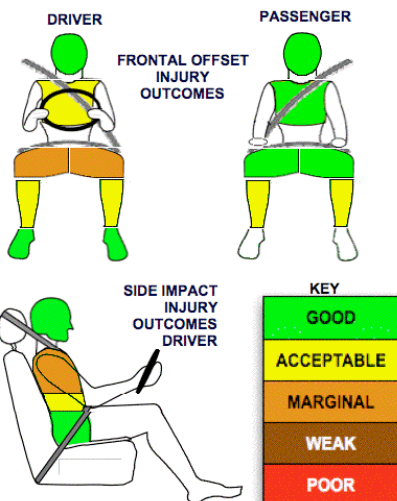
Dual front airbags and antilock brakes (ABS) with electronic brake distribution (EBD) are standard. Side airbags (with chest and head protection), a driver knee airbag and ESC are standard on the Zetec and optional on the other variants. Intelligent seat belt reminders are fitted to both front seats.

The front seat belt buckles are mounted on the seats and the upper anchorages are adjustable. These features improve the fit of the seat belt. Pretensioners are fitted to the front seat belts to reduce slack in the event of a crash. A three point seat belt is fitted to the centre rear seat. This provides better protection than a two point (lap) seat belt.

OCCUPANT PROTECTION: 4 Stars

The Fiesta scored 12.90 out of 16 in the offset crash test. The passenger compartment held its shape well. There was a moderate risk of serious leg injury for the driver.

The vehicle scored 13.72 out of 16 in the side impact crash test. There was a moderate risk of serious chest injury for the driver.



January 2009

PO Box 4041

Manuka ACT 2603

fiesta09x.doc

Issued 19/12/2008



ANCAP

Crash testing for safety

AUSTRALASIAN
NEW CAR ASSESSMENT
PROGRAM

TECHNICAL DATA - FORD FIESTA CL & LX - 2009 on

INJURY MEASUREMENTS

| Body region | Offset Crash Test at 64km/h (v4.2) | | Side Impact Crash Test at 50km/h (ECE Regulation 95) |
|--------------------------------|---------------------------------------|------------|--|
| | Driver | Passenger | Driver |
| Head HIC | 304 | 399 | 189 |
| Acceleration (g for 3ms) | 43.4 | 49.4 | 63.0 |
| Neck - Shear (kN) | 0.54 | 0.34 | - |
| Tension (kN) | 1.52 | 0.98 | - |
| Extension (Nm) | 19.5 | 13.5 | - |
| Chest Accln (g for 3ms) | - | - | - |
| Compression (mm) | 25.44 | 19.25 | 26.46 |
| Viscous criterion (m/s) | 0.08 | 0.06 | 0.24 |
| Abdomen - Force (kN) | - | - | 1.280 |
| Pelvis - Force (kN) | - | - | 2.300 |
| Upper legs Force (kN) | | | |
| Left | 0.83 | 0.45 | |
| Right | 0.78 | 0.42 | |
| Knee displ (mm) | | | |
| Left | 0.00 | 0.00 | |
| Right | 0.00 | 0.00 | |
| Lower legs Force (kN) | | | |
| Left | 2.57 | 2.92 | |
| Right | 2.30 | 2.40 | |
| Index (Upper/Low) | | | |
| Left | 0.32 /0.26 | 0.33 /0.37 | |
| Right | 0.31 /0.34 | 0.37/0.44 | |

Bonus points (maximum 5)

Pole Test: Not eligible due to a lack of head-protecting side airbags

Seat belt reminders: 2 (see table below for details)

Modifiers - deductions from offset test scores

| | |
|------------|-------------------|
| Head | No deduction |
| Chest | No deduction |
| Upper leg | Lacks knee airbag |
| Lower leg | No deduction |
| Foot score | Score 4 points |

Modifiers - deductions from side impact test scores

| | | |
|-------|-----------|----------------|
| Chest | T12 loads | 0.64 deduction |
|-------|-----------|----------------|

Safety features

These specifications are subject to change. Please check with manufacturer for the latest specifications.



| Feature | Standard | Additional Info | ANCAP Rating |
|---|----------|--|--------------|
| Driver airbag | S | Antilock (ABS) brakes / Electronic brake distribution / Brake Assist | S/S/O |
| Passenger front airbag | S | Electronic stability control (ESC, VSC, DSC, ESP, VSA) | O# |
| Side airbags, front seats - chest protection | O | 3 point centre rear seat belt | S |
| Side airbags, front seats - head protection | O | Active head restraints - front seats | X |
| Side airbags, rear seats - head protection | X | Intelligent seat belt reminder - driver | S |
| Driver knee airbag | O ✓ | Intelligent seat belt reminder - front passenger | S |
| Seat belt pretensioners (Front/Rear outboard) | S/X | Rear seat belt status indicator | X |

Key: ✓ = Fitted to vehicle that was crash tested (where not standard)

S = standard on all variants

O = optional on base variant. May be standard on higher variants

V= not available on base variant but standard or optional on higher variants

X = not available on any variant

ESC required by ANCAP for 5 star rating from 2008