

Crash Test Results

New Car Safety

FORD FALCON UTE (4 AIRBAGS*)

From Dec 2008 Dual front & side airbags



Side pole crash test at 29km/h

FRONTAL OFFSET CRASH TEST (v4.1)

Body region scores out of 4 points each: Head/neck 4 pts, chest 2.75 pts, upper legs 4 pts, lower legs 3.87 pts.

The passenger compartment held its shape extremely well in the offset crash test. The accelerator pedal moved rearwards by 60 mm. The brake pedal moved downwards 2mm. The steering wheel hub moved 30mm forward, 15 mm upward and 5 mm sideways. There was no rearwards movement of the front ("A") pillar. All doors remained closed during the crash. After the crash both doors could be opened with normal effort.

The airbag cushioned the head of the driver and contact was stable. There were no knee hazards with the tunnel-mounted transmission control. Due to knee hazards, a 2 point deduction applies where the transmission control is mounted on the steering column and that variant remains a 4 star rating.

SIDE IMPACT CRASH TEST (v4.1)

Body region scores out of 4 points each: Head 4 pts, chest 3.96 pts, abdomen 4 pts, pelvis 4 pts.

The vehicle was eligible for an optional pole impact test, since it had head-protecting side airbags and it was within reach of a 5-star rating. The manufacturer decided to go ahead with the pole test and the vehicle earned a further two points.

PEDESTRIAN PROTECTION: 2 Stars

The following are based on ANCAP's tests of the Falcon sedan.

Occupant Protection Score 33.58 out of 37

* See below for all features required for a 5-star rating

Tested variant: STYLESIDE BOX Eng: 4 litre

Kerb mass: 1730 kg

Category: UTILITY

Vehicles built: 2008 & 2010

Model History and Safety Features

The tested model of Ford Falcon FG Ute was introduced in Australia during 2008. This 5-star rating applies to 6 & 8 cylinder models fitted with head/chest-protecting side airbags, electronic stability control (ESC) and a tunnel-mounted transmission control/gear shift. It includes LPG and EcoLPi variants.

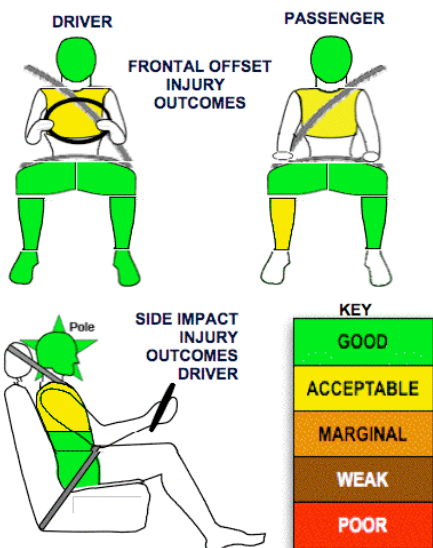
Dual front airbags are standard equipment. Antilock brakes (ABS) with electronic brakeforce distribution (EBD) are also standard. Head/chest-protecting ("combo") side airbags are optional or standard, depending on the variant. ESC became available as an option from December 2008 (petrol) and May 2009 (E-Gas). An advanced seat belt reminder is fitted to the driver seat. Several other safety features are incorporated in the Intelligent Safety System.


Pretensioners are fitted to the front seat belts to reduce slack in the event of a crash.

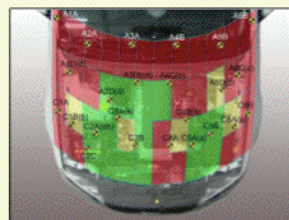
OCCUPANT PROTECTION: 5 Stars

The Falcon Ute scored 14.62 out of 16 in the offset crash test. The passenger compartment was in excellent shape after the test. There was a slight risk of serious chest injury for the driver and passenger and a slight risk of serious lower leg injury for the passenger.

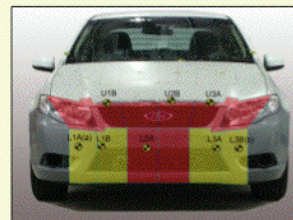
The vehicle scored 15.96 out of 16 in the side impact crash test. There was a slight risk of serious chest injury for the driver. A further two points were scored in the optional pole test.



PEDESTRIAN PROTECTION		
 ANCAP Rated ★ ★ ★ ★ ★ Version 4.1	Child head impacts	7.25
	Adult head impacts	2.10
	Upper leg impacts	Zero
	Lower leg impacts	1.60
	Total (out of 36)	10.95



Child and adult head impact



Adult leg impact (upper and full legforms)

pass marginal fail

June 2010

PO Box 4041

Manuka ACT 2603

falcute10c.doc

Revised 22/9/2011



www.ancap.com.au

TECHNICAL DATA - FORD FALCON UTE (FG) - From Dec 2008

INJURY MEASUREMENTS

Body region	Offset Crash Test at 64km/h (v4.1)		Side Impact Crash Test at 50km/h (v4.2)
	Driver	Passenger	Driver
Head HIC	219	292	198
Acceleration (g for 3ms)	37.8	45.7	62.4
Neck - Shear (kN)	0.39	0.35	-
Tension (kN)	1.55	1.11	-
Extension (Nm)	22.4	14.8	-
Chest Accln (g for 3ms)	34.300	38.300	-
Compression (mm)	30.72	22.80	22.2
Viscous criterion (m/s)	0.16	0.10	0.27
Abdomen - Force (kN)	-	-	0.94
Pelvis - Force (kN)	-	-	1.950
Upper legs Force (kN)			
Left	0.97	0.28	
Right	0.17	1.83	
Knee displ (mm)			
Left	0.47	0.22	
Right	0.04	1.87	
Lower legs Force (kN)			
Left	1.92	1.45	
Right	1.64	1.42	
Index (Upper/Low)			
Left	0.39 /0.32	0.34 /0.16	
Right	0.31 /0.37	0.3/0.43	

Bonus points (maximum 5)

Pole Test: 2 points

Seat belt reminders: 1 (see table below for details)

Modifiers - deductions from offset test scores

Head	No deduction
Chest	No deduction
Upper leg Variable & conc. loading	No deduction@
Lower leg	No deduction
Foot score	Score 4 points

Notes: Steering column and pedal movements are measured relative to the driver's seat.

@ 2 point deduction for left leg where the transmission control is on the steering column.

Modifiers - deductions from side impact test scores

Chest	No deduction
-------	--------------

Safety features (May 2010)

These specifications are subject to change. Please check with manufacturer for the latest specifications.

Driver airbag	S	Antilock (ABS) brakes / Electronic brakeforce distribution / Brake Assist	S/S/O*
Passenger front airbag	S	Electronic stability control (ESC, VSC, DSC, ESP, VSA)	O*#
Side airbags, front seats - chest protection	O √	3 point centre rear seat belt	N/A
Side airbags, front seats - head protection	O √	Active head restraints - front seats	X
Side airbags, rear seats - head protection	N/A	Intelligent seat belt reminder - driver	S
Driver knee airbag	X	Intelligent seat belt reminder - front passenger	X
Seat belt pretensioners (Front/rear outboard)	S/ N/A	Rear seat belt status indicator	N/A

* ESC and Emergency Brake Assist Available from December 2008 (petrol) and May 2009 (E-Gas).

Key: √ = Fitted to vehicle that was crash tested (where not standard)

S = standard on all variants

O = optional on base variant. May be standard on higher variants

V= not available on base variant but standard or optional on higher variants

X = not available on any variant N/A = not applicable

ESC required by ANCAP for 5 star rating from 2008

