

# Crash Test Results

## New Car Safety

### FIAT 500 with ESC (LHD)

2008 on

Front+side+head airbags



Offset crash test at 64km/h

#### FRONTAL OFFSET CRASH TEST (v4.1)

Body region scores out of 4 points each: Head/neck 4 pts, chest 3.82 pts, upper legs 4 pts, lower legs 3.29 pts.

The passenger compartment held its shape well in the offset crash test. The clutch pedal moved rearwards by 30 mm and downwards 5mm. The steering wheel hub moved 3mm forward, 17 mm upward and 1 mm sideways. The front ("A") pillar moved 7 mm rearwards. All doors remained closed during the crash. After the crash all doors could be opened with normal effort.


The airbag cushioned the head of the driver and contact was stable. There were no knee hazards. The passenger's head was cushioned by the airbag.

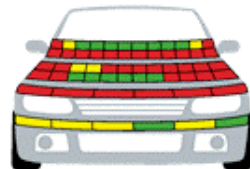
#### SIDE IMPACT CRASH TEST (v4.1)

Body region scores out of 4 points each: Head 4 pts, chest 3.8 pts, abdomen 4 pts, pelvis 4 pts.

The vehicle was eligible for an optional pole impact test, since it had head-protecting side airbags and scored four points for the head in the side impact test. The manufacturer decided to go ahead with the pole test and the vehicle earned a further two points.

#### PEDESTRIAN PROTECTION: 2 Stars

PEDESTRIAN PROTECTION		
 <b>ANCAP</b> Rated ★ ★ ★ ★ Tested by Euro NCAP v4.1	Child head impacts	4.76
	Adult head impacts	3.25
	Upper leg impacts	Zero
	Lower leg impacts	5.57
	Total (out of 36)	13.58



■ GOOD  
■ ADEQUATE  
■ MARGINAL


**ANCAP** Occupant Protection  
 Rated ★ ★ ★ ★ ★

**Occupant Protection Score** 34.91 out of 37

Variant: Pop 3 door hatch

Eng: 1.2 litre

Kerb weight: 930 kg

Category: LIGHT CAR

Vehicles built: 2007

Tested by Euro NCAP

**Important note:** The *left-hand-drive* European model was tested by Euro NCAP. Australasian specifications may vary and therefore models sold in Australasia might provide different levels of protection to those described on this page.

#### Model History and Safety Features

The tested model of Fiat 500 was introduced in Australia during 2008. It is due in New Zealand later in 2008

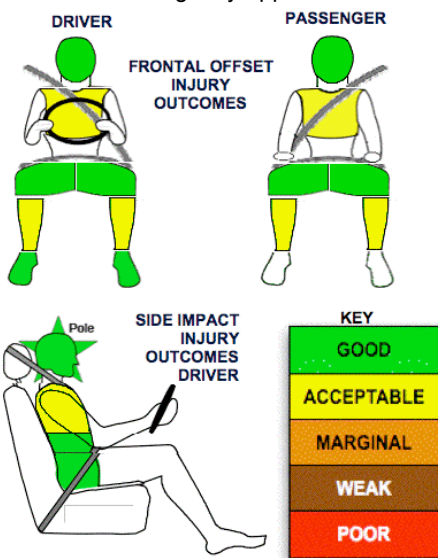
Dual front airbags, side airbags and head-protecting side curtains are standard equipment. Antilock brakes (ABS) with electronic brake distribution (EBD) are also standard. Electronic stability control (ESC) is not available on the 1.2 Pop but is standard on other variants. Intelligent seat belt reminders are fitted to both front seats.

The front seat belt buckles are mounted on the seats and the upper anchorages are adjustable. These features improve the fit of the seat belt. Pretensioners are fitted to the front seat belts to reduce slack in the event of a crash

#### OCCUPANT PROTECTION: 5 Stars

The Fiat 500 scored 15.11 out of 16 in the offset crash test. The passenger compartment held its shape well. There was a slight risk of serious chest and leg injury for both the driver and passenger.

The vehicle scored 15.80 out of 16 in the side impact crash test. There was a slight risk of serious chest injury for the driver. A further two points in the optional pole test. This ANCAP 5 star rating only applies to models fitted with ESC.



March 2008

PO Box 4041

Manuka ACT 2603

fiat500\_08.doc

Issued 10/3/08



## ANCAP

Crash testing for safety

AUSTRALASIAN  
NEW CAR ASSESSMENT  
PROGRAM

# TECHNICAL DATA - FIAT 500 with ESC (LHD) - 2008 on

## INJURY MEASUREMENTS

Body region	Offset Crash Test at 64km/h (v4.1)		Side Impact Crash Test at 50km/h (v4.1)
	Driver	Passenger	Driver
<b>Head HIC</b>	563	357	64
Acceleration (g for 3ms)	58.7	44.6	40.7
<b>Neck - Shear (kN)</b>	0.67	0.28	-
Tension (kN)	1.72	0.67	-
Extension (Nm)	18.9	18.4	-
<b>Chest Accln (g for 3ms)</b>			-
Compression (mm)	23.27	22.43	19.97
Viscous criterion (m/s)	0.08	0.10	0.12
<b>Abdomen - Force (kN)</b>	-	-	0.750
<b>Pelvis - Force (kN)</b>	-	-	2.310
<b>Upper legs Force</b>			
Left (kN)	0.52	0.28	
Right (kN)	0.59	0.30	
<b>Knee displ (mm)</b>			
Left	0.60	0.50	
Right	2.60	0.30	
<b>Lower legs Force</b>			
Left (kN)	3.07	2.24	
Right (kN)	2.36	1.27	
<b>Index (Upper/Low)</b>			
Left	0.47 /0.52	0.35 /0.22	
Right	0.43 /0.39	.35/.42	

### Bonus points (maximum 5)

Pole Test: 2 pts

Seat belt reminders: 2 (see table below for details)

### Modifiers - deductions from offset test scores

Head	No deduction
Chest	No deduction
Upper leg	No deduction
Lower leg	No deduction
Foot score	Score 4 points

### Modifiers - deductions from side impact test scores

Chest T12 load	0.2 pt deduction
----------------	------------------

### Safety features

These specifications are subject to change. Please check with manufacturer for the latest specifications.



Driver airbag	S	Antilock (ABS) brakes / Electronic brake distribution / Brake Assist	S/S/X
Passenger front airbag	S	Electronic stability control (ESC, VSC, DSC, ESP, VSA)	V#
Side airbags, front seats - chest protection	S	3 point centre rear seat belt	-
Side airbags, front seats - head protection	S	Active head restraints - front seats	X
Side airbags, rear seats - head protection	S	Intelligent seat belt reminder - driver	S
Driver knee airbag	S	Intelligent seat belt reminder - front passenger	S
Seat belt pretensioners (front/rear)	S/X	Rear seat belt status indicator	X

Key:

S = standard on all variants

O = optional on base variant. May be standard on higher variants

V= not available on base variant but standard or optional on higher variants

X = not available on any variant

# ESC required by ANCAP for 5 star rating from 2008