

Crash Test Results

New Car Safety

DODGE CALIBER (LHD)

2007 on Dual front & side curtain airbags



Offset crash test at 64km/h

FRONTAL OFFSET CRASH TEST (v4.1)

Body region scores out of 4 points each: Head/neck 3 pts, chest 3.25 pts, upper legs 2 pts, lower legs 2.89 pts.

The passenger compartment held its shape well in the offset crash test. The brake pedal moved rearwards by 67 mm and upwards 18 mm. The steering wheel hub moved 41mm forward, 9mm upward and 4mm sideways. The front ("A") pillar moved 6 mm rearwards. All doors remained closed during the crash and could be opened with normal effort after the crash.

The driver and passenger airbags did not prevent contact with the steering wheel and dash respectively. Steering column and dash components were a potential source of injury for the driver's knees. Dash components were a hazard for the passenger's knees.

SIDE IMPACT CRASH TEST (v4.1)

Body region scores out of 4 points each: Head 4 pts, chest 4 pts, abdomen 4 pts, pelvis 4 pts.

The vehicle was eligible for an optional pole impact test, since it had head-protecting side airbags and scored four points for the head in the side impact test. The manufacturer decided to go ahead with the pole test and the vehicle earned a further two points.

PEDESTRIAN PROTECTION RATING (v4.1)

PEDESTRIAN PROTECTION		
<p>Rated ★ ★ ★ ★ ★ Tested by Euro NCAP</p>	Child head impacts	4.14
	Adult head impacts	0.56
	Upper leg impacts	Zero
	Lower leg impacts	Zero
	Total (out of 36)	4.70



Pedestrian protection

Occupant Protection
Rated ★ ★ ★ ★ ★

Occupant Protection Score 29.14 out of 37

Variant: SEDAN Eng: 2 litre diesel
Kerb weight: 1490 kg Category: MEDIUM CAR/MPV
Vehicles built: 2007 Tested by Euro NCAP

Important note: The *diesel left-hand-drive* European model was tested by Euro NCAP. Australasian specifications may vary and therefore models sold in Australasia might provide different levels of protection to those described on this page.

Model History and Safety Features

The tested model of Dodge Caliber was introduced in Australia during 2007.

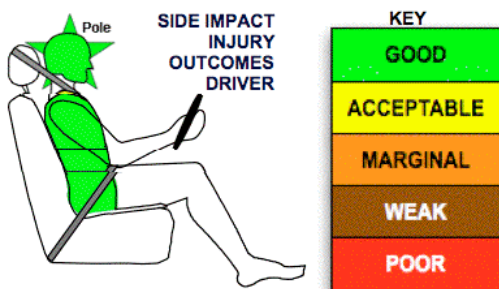
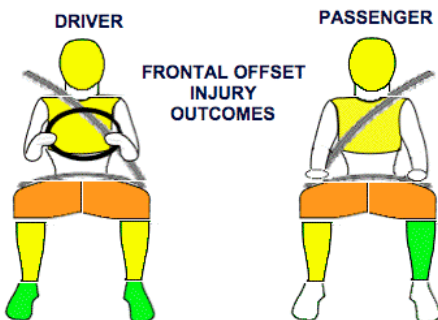
Dual front airbags and head-protecting side curtain airbags are standard equipment. Antilock brakes (ABS) with electronic brake distribution (EBD) are also standard. Electronic stability control (ESC) is standard on the diesel and R/T variants and optional on the others. .

The front seat belt buckles are mounted on the seats and the upper anchorages are adjustable. These features improve the fit of the seat belt. Pretensioners are fitted to the front seat belts to reduce slack in the event of a crash. A three point seat belt is fitted to the centre rear seat. This provides better protection than a two point (lap) seat belt.

OCCUPANT PROTECTION: 4 Stars

The Caliber scored 11.14 out of 16 in the offset crash test. The passenger compartment held its shape well. Protection from serious leg injury was marginal for the driver and passenger.

The vehicle scored 16 out of 16 in the side impact crash test and a further two points in the optional pole test.



November 2007

PO Box 1555
Canberra ACT
Australia 2601
caliber07.doc
Issued 9/11/07



ANCAP

Crash testing for safety
AUSTRALASIAN
NEW CAR ASSESSMENT
PROGRAM

TECHNICAL DATA - DODGE CALIBER (LHD) - 2007 on

INJURY MEASUREMENTS

Body region	Offset Crash Test at 64km/h (v4.1)		Side Impact Crash Test at 50km/h (v4.1)
	Driver	Passenger	Driver
Head HIC	372	328	33
Acceleration (g for 3ms)	49.1	41.4	18.4
Neck - Shear (kN)	0.33	0.32	-
Tension (kN)	1.52	0.84	-
Extension (Nm)	14.7	13.4	-
Chest Accln (g for 3ms)	-	-	-
Compression (mm)	27.23	25.70	12.51
Viscous criterion (m/s)	0.09	0.09	0.08
Abdomen - Force (kN)	-	-	0.800
Pelvis - Force (kN)	-	-	1.170
Upper legs Force (kN)			
Left	0.81	2.14	
Right	1.15	0.96	
Knee displ (mm)			
Left	0.00	0.30	
Right	0.00	0.00	
Lower legs Force (kN)			
Left	2.57	1.70	
Right	2.11	2.01	
Index (Upper/Low)			
Left	0.52 /0.49	0.11 /0.33	
Right	0.43 /0.65	0.23/0.2	

Bonus points (maximum 5)

Pole Test: 2 pts

Seat belt reminders: None eligible (see table below for details)

Modifiers - deductions from offset test scores

Head Airbag bottomed out 1pt deduction, Drv & Pass

Chest No deduction

Upper leg Variable & conc. loading 2 pt deduction Left & Right for Driver & Passenger

Lower leg No deduction

Foot score Score 4 points

Modifiers - deductions from side impact test scores

Chest No deduction

Safety features

These specifications are subject to change. Please check with manufacturer for the latest specifications.

Driver airbag	S	Antilock (ABS) brakes / Electronic brake distribution	S/S
Passenger front airbag	S	Electronic stability control (ESC, VSC, DSC, ESP, VSA)	O
Side airbags, front seats - chest protection	X	3 point centre rear seat belt	S
Side airbags, front seats - head protection	S	Active head restraints - front seats	X
Side airbags, rear seats - head protection	S	Intelligent seat belt reminder - driver	X
Driver knee airbag	X	Intelligent seat belt reminder - front passenger	X
Front seat belt pretensioners	S	Rear seat belt status indicator	X

Key: √ = Fitted to vehicle that was crash tested (where not standard)

S = standard on all variants

O = optional on base variant. May be standard on higher variants

V= not available on base variant but standard or optional on higher variants

X = not available on any variant

