

Crash Test Results

New Car Safety

DAIHATSU MATERIA (LHD)

2007 on Front & side (chest) airbags*



Offset crash test at 64km/h



ANCAP

Rated ★★★★★

Occupant Protection

Occupant Protection Score 26.68 out of 37

* Tested vehicle did not have side curtains but they are standard in New Zealand.

Variant: WAGON

Eng: 1.5 litre

Kerb weight: 1040 kg

Category: SMALL CAR

Vehicles built: 2007

Tested by Euro NCAP

Important note: The *left-hand-drive* European model was tested by Euro NCAP. Australasian specifications may vary and therefore models sold in Australasia might provide different levels of protection to those described on this page.

Model History and Safety Features

The tested model of Daihatsu Materia was introduced in New Zealand during 2007. It is not sold in Australia.

Dual front airbags, side airbags and head-protecting side curtains are standard equipment in New Zealand. Antilock brakes (ABS) with electronic brake distribution (EBD) are also standard. Electronic stability control (ESC) is optional. Intelligent seat belt reminders are fitted to both front seats.

The front seat belt buckles are mounted on the seats and the upper anchorages are adjustable. These features improve the fit of the seat belt. Pretensioners are fitted to the front seat belts to reduce slack in the event of a crash. A three point seat belt is fitted to the centre rear seat. This provides better protection than a two point (lap) seat belt.

OCCUPANT PROTECTION: 4 Stars

The Materia scored 9.60 out of 16 in the offset crash test. The passenger compartment held its shape well. Protection from serious leg injury was marginal for the driver.

The vehicle scored 15.08 out of 16 in the side impact crash test. There was a slight risk of serious chest for the driver.

FRONTAL OFFSET CRASH TEST (v4.1)

Body region scores out of 4 points each: Head/neck 4 pts, chest 2.54 pts, upper legs 0.53 pts, lower legs 2.52 pts.

The passenger compartment held its shape well in the offset crash test. The clutch pedal moved rearwards by 137 mm and upwards 20 mm. The steering wheel hub moved 7mm forward, 25 mm upward and 2 mm sideways. The front ("A") pillar moved 12 mm rearwards. All doors remained closed during the crash.


The airbag cushioned the head of the driver and contact was stable. Steering column and dash components were a potential source of injury for the driver's knees. The passenger's head was cushioned by the airbag.

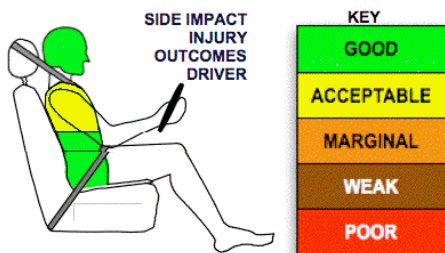
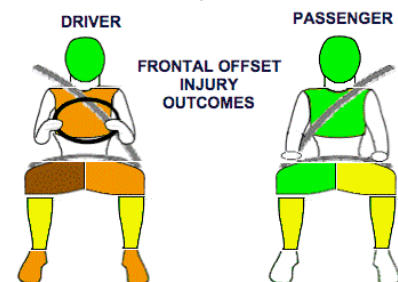
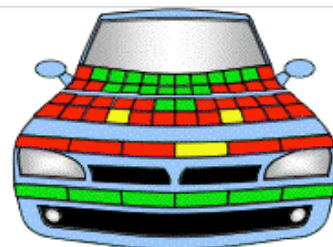
SIDE IMPACT CRASH TEST (v4.1)

Body region scores out of 4 points each: Head 4 pts, chest 3.08 pts, abdomen 4 pts, pelvis 4 pts.

The vehicle tested by Euro NCAP was not eligible for a Pole Impact Test since it did not have head-protecting side airbags. This test can earn eligible vehicles an extra two points. The New Zealand Materia has standard side curtains and so can be expected to offer better protection in side impacts than the European model.

PEDESTRIAN PROTECTION RATING (v4.1)

PEDESTRIAN PROTECTION		Child head impacts	1.49
 ANCAP Rated ★★☆☆☆ Tested by Euro NCAP	Adult head impacts	8.00	
	Upper leg impacts	0.09	
	Lower leg impacts	6.00	
	Total (out of 36)	15.58	



January 2008

PO Box 1555

Canberra ACT

Australia 2601

MATERIA08.DOC

Issued 14/1/08



ANCAP

Crash testing for safety

AUSTRALASIAN
NEW CAR ASSESSMENT
PROGRAM

www.ancap.com.au

TECHNICAL DATA - DAIHATSU MATERIA (New Zealand) - 2007 on

INJURY MEASUREMENTS

Body region	Offset Crash Test at 64km/h (v4.1)		Side Impact Crash Test at 50km/h (v4.1)
	Driver	Passenger	Driver
Head HIC	510	253	113
Acceleration (g for 3ms)	58.4	39.9	38.4
Neck - Shear (kN)	0.36	0.93	-
Tension (kN)	1.45	1.04	-
Extension (Nm)	33.0	10.2	-
Chest Accln (g for 3ms)	-	-	-
Compression (mm)	32.20	20.91	18.31
Viscous criterion (m/s)	0.15	0.08	0.13
Abdomen - Force (kN)	-	-	0.86
Pelvis - Force (kN)	-	-	1.88
Upper legs Force (kN)			
Left	3.12	0.93	
Right	1.13	0.09	
Knee displ (mm)			
Left	1.00	0.60	
Right	9.30	0.00	
Lower legs Force (kN)			
Left	0.78	2.29	
Right	1.13	2.08	
Index (Upper/Low)			
Left	0.48 /0.24	0.44 /0.17	
Right	0.54 /0.20	0.41/0.15	

Bonus points (maximum 5)

Pole Test: Not eligible due to a lack of head-protecting side airbags on tested vehicle.

Seat belt reminders: 2 (see table below for details)

Modifiers - deductions from offset test scores

Head	No deduction
Chest	No deduction
Upper leg Variable & conc. loading	2 pt deduction Left & Right
Driver	1 pt deduction Left
Passenger	No deduction
Lower leg	No deduction
Foot score	Clutch displacement
	Score 2.52 points

Modifiers - deductions from side impact test scores

Chest	Backplate load	0.92 pt deduction
-------	----------------	-------------------

Safety features

These specifications are subject to change. Please check with manufacturer for the latest specifications.

Driver airbag	S	Antilock (ABS) brakes / Electronic brake distribution	S/S
Passenger front airbag	S	Electronic stability control (ESC, VSC, DSC, ESP, VSA)	O
Side airbags, front seats - chest protection	S	3 point centre rear seat belt	
Side airbags, front seats - head protection	S #	Active head restraints - front seats	S
Side airbags, rear seats - head protection	S #	Intelligent seat belt reminder - driver	S
Driver knee airbag	X	Intelligent seat belt reminder - front passenger	S
Front seat belt pretensioners	S	Rear seat belt status indicator	X

Side curtains are standard in New Zealand but were not fitted to the vehicle tested by Euro NCAP

Key:

S = standard on all variants

O = optional on base variant. May be standard on higher variants

V= not available on base variant but standard or optional on higher variants

X = not available on any variant

