

Crash Test Results

New Car Safety

CITROEN C4 PICASSO (LHD)

2007 on Front+side+head airbags



Offset crash test at 64km/h



Occupant Protection Score 34.69 out of 37

Variant: 7 seat Grand Picasso Eng: 1.6 litre diesel
Kerb weight: 1540 kg Category: MEDIUM CAR/MPV
Vehicles built: 2006

Important note: The *diesel left-hand-drive* European model was tested by Euro NCAP. Australasian specifications may vary and therefore models sold in Australasia might provide different levels of protection to those described on this page.

Model History and Safety Features

The tested model of the Citroen C4 Picasso was introduced in Australia during 2007.

Dual front airbags, side airbags, driver knee airbag and head-protecting side curtains are standard equipment. Antilock brakes (ABS), electronic brake distribution (EBD) and electronic stability control (ESC) are also standard. Intelligent seat belt reminders are fitted to front seats.

The front seat belt buckles are mounted on the seats and the upper anchorages are adjustable. These features improve the fit of the seat belt. Pre-tensioners are fitted to the front seat belts to reduce slack in the event of a crash. A three point seat belt is fitted to the centre rear seat. This provides better protection than a two point (lap) seat belt.

OCCUPANT PROTECTION: 5 Stars

The Citroen C4 Picasso scored 14.87 out of 16 in the offset crash test. The passenger compartment held its shape well. There was a slight risk of serious leg injury for the driver and passenger.

The vehicle scored 15.83 out of 16 in the side impact crash test and a further two points in the optional pole test.

FRONTAL OFFSET CRASH TEST (v4.1)

Body region scores out of 4 points each: Head/neck 4 pts, chest 4 pts, upper legs 3 pts, lower legs 3.87 pts.

The passenger compartment held its shape well in the offset crash test. The brake pedal moved rearwards by 38 mm. The steering wheel hub moved rearwards 6 mm, upwards 16 mm and sideways 17mm. The front ("A") pillar moved 9 mm rearwards. All doors remained closed during the crash. After the crash high manual effort was needed to open the rear door on the driver's side. All other doors opened with normal effort.


The airbag cushioned the head of the driver and contact was stable. Steering column components were a potential source of injury for the driver's knees. The passenger's head was cushioned by the airbag.

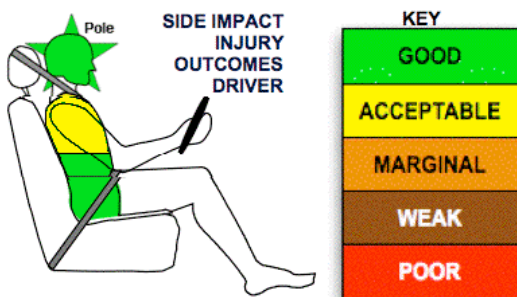
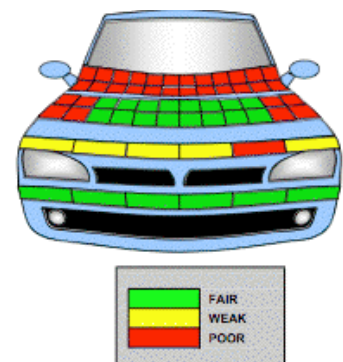
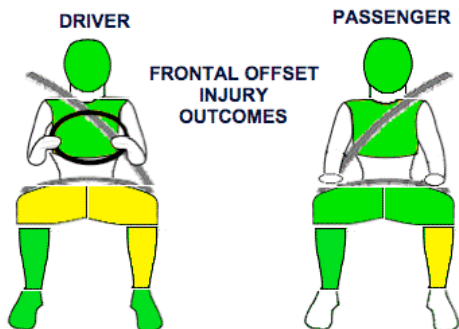
SIDE IMPACT CRASH TEST (v4.1)

Body region scores out of 4 points each: Head 4 pts, chest 3.83 pts, abdomen 4 pts, pelvis 4 pts.

The vehicle was eligible for an optional pole impact test, since it had head-protecting side airbags and scored four points for the head in the side impact test. The manufacturer decided to go ahead with the pole test and the vehicle earned a further two points.

PEDESTRIAN PROTECTION RATING (v4.1)

PEDESTRIAN PROTECTION		
 ANCAP Rated ★ ★ ★ ★	Child head impacts	8
	Adult head impacts	Zero
	Upper leg impacts	2.4
	Lower leg impacts	6
	Total (out of 36)	16.4



June 2007

PO Box 1555
Canberra ACT
Australia 2601
picasso07.doc
Issued 6/6/07



TECHNICAL DATA - CITROEN PICASSO - 2007 on

INJURY MEASUREMENTS

Body region	Offset Crash Test at 64km/h (v4.1)		Side Impact Crash Test at 50km/h (v4.1)
	Driver	Passenger	Driver
Head HIC	211	214	43
Acceleration (g for 3ms)	35.3	37.1	22.9
Neck - Shear (kN)	0.41	0.59	-
Tension (kN)	0.98	1.43	-
Extension (Nm)	4.3	5.3	-
Chest Accln (g for 3ms)	-	-	-
Compression (mm)	21.20	18.90	22.87
Viscous criterion (m/s)	0.07	0.05	0.13
Abdomen - Force (kN)	-	-	0.480
Pelvis - Force (kN)	-	-	2.270
Upper legs Force			
Left (kN)	0.85	0.56	
Right (kN)	0.64	0.60	
Knee displ (mm)			
Left	0.90	0.00	
Right	2.50	0.70	
Lower legs Force			
Left (kN)	2.12	2.20	
Right (kN)	1.40	1.79	
Index (Upper/Low)			
Left	0.27 /0.25	0.26 /0.25	
Right	0.39 /0.35	0.23/0.22	

Bonus points (maximum 5)

Pole Test: 2 pts

Seat belt reminders: 2 (see table below for details)

Modifiers - deductions from offset test scores

Head	No deduction
Chest	No deduction
Upper leg Variable & conc. loading	1 pt deduction Left & Right
Lower leg	No deduction
Foot score	Score 4 points



Modifiers - deductions from side impact test scores

Chest	No deduction
-------	--------------

Safety features

These specifications are subject to change. Please check with manufacturer for the latest specifications.

Driver airbag	S	Antilock (ABS) brakes / Electronic brake distribution	S/S
Passenger front airbag	S	Electronic stability control (ESC, VSC, DSC, ESP, VSA)	S
Side airbags, front seats - chest protection	S	3 point centre rear seat belt	S
Side airbags, front seats - head protection	S	Active head restraints - front seats	
Side airbags, rear seats - head protection		Intelligent seat belt reminder - driver	S
Driver knee airbag	S	Intelligent seat belt reminder - front passenger	S
Front seat belt pretensioners	S	Rear seat belt status indicator	S*

* Although seat belt status indicators are fitted to all rear seats Euro NCAP found they were not eligible for a bonus point.

Key:

S = standard on all variants

O = optional on base variant. May be standard on higher variants

V= not available on base variant but standard or optional on higher variants

X = not available on any variant