

Crash Test Results

New Car Safety

CITROEN DS4 (PETROL)

From 2012 Front+side+head airbags



ANCAP Safety Rating
Safety ★★★★★

Occupant Protection Score 35.68 out of 37

Variant: VTi Eng: 1.6 petrol
Kerb mass 1080 kg Category: CAR - SMALL
Vehicles built: 2011 Tested by Euro NCAP

Important note: The petrol left-hand-drive European model was tested by Euro NCAP. Australasian specifications may vary and therefore models sold in Australasia might provide different levels of protection to those described on this page.

Model History and Safety Features

The tested model of Citroen DS4 was introduced in Australia and New Zealand during 2012. This ANCAP rating applies to petrol variants of the DS4.

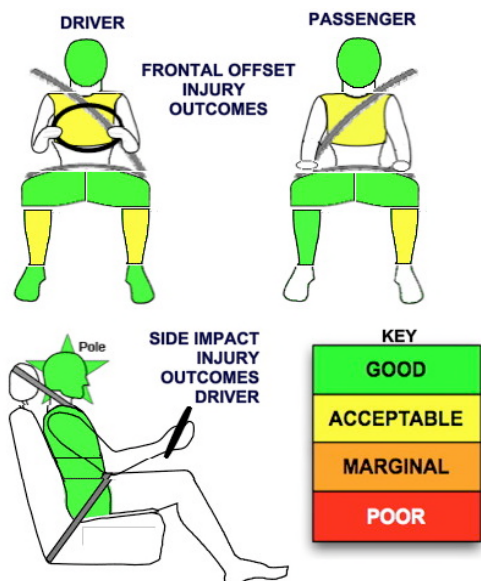
Dual front airbags, side airbags and head-protecting side curtains are standard equipment. Antilock brakes (ABS), electronic brakeforce distribution (EBD) and electronic stability control (ESC) are also standard. Intelligent seat belt reminders are fitted to all seats.

Pretensioners are fitted to the front seat belts to reduce slack in the event of a crash.

OCCUPANT PROTECTION: 5 Stars

The DS4 scored 14.68 out of 16 in the offset crash test. The passenger compartment held its shape well. There was a slight risk of serious chest and leg injury for the driver and passenger.

The vehicle scored 16 out of 16 in the side impact crash test and a further two points in the pole test.



Whiplash Protection (RCAR Protocol)



Offset crash test at 64km/h (Euro NCAP)

FRONTAL OFFSET CRASH TEST

Body region scores out of 4 points each: Head/neck 4 pts, chest 2.86 pts, upper legs 4 pts, lower legs 3.82 pts.

The passenger compartment held its shape well in the offset crash test. The brake pedal moved rearwards by 29 mm. The clutch pedal moved upwards 17 mm. The steering wheel hub moved 7 mm rearward, 9mm downward and 9mm sideways. The front ("A") pillar moved -22mm rearwards. All doors remained closed during the crash. After the crash tools were required to open the driver door.

The airbag cushioned the head of the driver and contact was stable. The passenger's head was cushioned by the airbag. There were no knee hazards.

SIDE IMPACT CRASH TEST

Body region scores out of 4 points each: Head 4 pts, chest 4 pts, abdomen 4 pts, pelvis 4 pts.

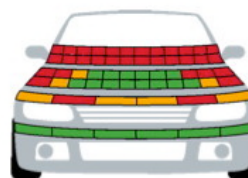
The vehicle was eligible for a pole impact test, since it had head-protecting side airbags. The vehicle earned the maximum two points in this test.

PEDESTRIAN PROTECTION: Marginal

The bumper provided good protection to pedestrians' legs. However, the front edge of the bonnet was marginal or poor. In most areas likely to be struck by the head of a child, the bonnet offered good protection. However, in those areas likely to be struck by an adult's head, protection was rated as poor in all areas tested, and no points were scored for this part of the assessment.

PEDESTRIAN PROTECTION	Child head impacts	7.53
MARGINAL	Adult head impacts	Zero
	Upper leg impacts	1.97
	Lower leg impacts	6
	Total (out of 36)	15.50

Tested by Euro NCAP v5.3



KEY
PASS
MARGINAL
FAIL

DECEMBER 2012

PO Box 4041
Manuka ACT 2603
ds4_12.doc Rated: 2012
Issued 21/11/2012



ANCAP

Crash testing for safety

AUSTRALASIAN
NEW CAR ASSESSMENT
PROGRAM

www.ancap.com.au

TECHNICAL DATA - CITROEN DS4 - From 2012

INJURY MEASUREMENTS

Body region	Offset Crash Test at 64km/h (v)		Side Impact Crash Test at 50km/h (v)
	Driver	Passenger	Driver
Head HIC	309	469	15
Acceleration (g for 3ms)	57.1	53.1	14.3
Neck - Shear (kN)	0.54	0.30	-
Tension (kN)	1.10	0.91	-
Extension (Nm)	39.1	6.3	-
Chest Accln (g for 3ms)	-	-	-
Compression (mm)	24.60	30.00	19.89
Viscous criterion (m/s)	0.07	0.09	0.11
Abdomen - Force (kN)	-	-	0.630
Pelvis - Force (kN)	-	-	1.610
Upper legs Force (kN)	Left	0.09	0.20
	Right	0.13	0.50
Knee displ (mm)	Left	0.20	0.10
	Right	0.00	0.10
Lower legs Force (kN)	Left	2.17	1.60
	Right	2.05	1.89
Index (Upper/Low)	Left	0.43 /0.21	0.44 /0.21
	Right	0.39 /0.27	0.36/0.21

Bonus points (maximum 5)

Pole Test: 2 pts

Seat belt reminders: 3 (see table below for details)

Modifiers - deductions from offset test scores

Head	No deduction
Chest	No deduction
Upper leg	No deduction
Lower leg	No deduction
Foot score	Score 4 points

Modifiers - deductions from side impact test scores

Chest	No deduction
-------	--------------

Safety features

These specifications are subject to change. Please check with manufacturer for the latest specifications.



Driver airbag	S	Antilock (ABS) brakes / Electronic brake distribution / Brake Assist	S/S/S
Passenger front airbag	S	Electronic stability control (ESC, VSC, DSC, ESP, VSA)	S#
Side airbags, front seats - chest protection	S	3 point seat belt for all forward-facing seats	S
Side airbags, front seats - head protection	S	Whiplash protection (RCAR protocol)	Good
Side airbags, rear seats - head protection	S	Intelligent seat belt reminder - driver	S
Driver knee airbag	X	Intelligent seat belt reminder - front passenger	S
Seat belt pretensioners (Front/Rear outboard)	S/X	Intelligent seat belt reminder - rear seats	S

Key:

S = standard on all variants

O = optional on base variant. May be standard on higher variants

V= not available on base variant but standard or optional on higher variants

X = not available on any variant

ESC required by ANCAP for 5 star rating from 2008



ANCAP

Crash testing for safety

AUSTRALASIAN
NEW CAR ASSESSMENT
PROGRAM

www.ancap.com.au