

Crash Test Results

New Car Safety

CITROEN C5 (LHD)

2008 on Front+side+head+knee airbags



ANCAP Occupant Protection
Rated ★★★★★

Occupant Protection Score 34.58 out of 37

Variant: Dynamic 5 dr hatch Eng: 2 litre diesel

Kerb weight: 1610 kg Category: Medium car

Vehicles built: 2008 and 2008 Tested by Euro NCAP

Important note: The *diesel left-hand-drive* European model with manual transmission was tested by Euro NCAP. Australasian specifications may vary and therefore models sold in Australasia might provide different levels of protection to those described on this page.

Model History and Safety Features

The tested model of C5 was introduced in Australia in September 2008.

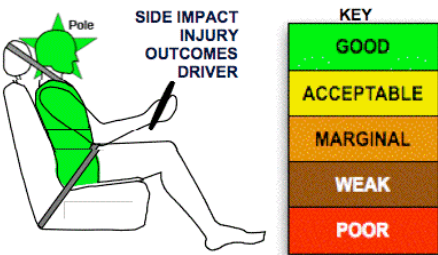
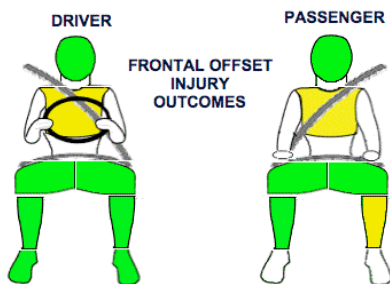
Dual front airbags, side airbags, head-protecting side curtains and a driver knee airbag are standard equipment. Antilock brakes (ABS), electronic brake distribution (EBD), brake assist and electronic stability control (ESC) are also standard. Chest-protecting side airbags are available for outboard rear seats. Intelligent seat belt reminders are fitted to both front seats.

Pretensioners are fitted to the front seat belts to reduce slack in the event of a crash. A three point seat belt is fitted to the centre rear seat. This provides better protection than a two point (lap) seat belt.

OCCUPANT PROTECTION: 5 Stars

The C5 scored 14.58 out of 16 in the offset crash test. The passenger compartment held its shape well. There was a slight risk of serious chest injury for the driver and passenger.

The vehicle scored 16 out of 16 in the side impact crash test and a further two points in the optional pole test.



Offset crash test at 64km/h

FRONTAL OFFSET CRASH TEST (v4.1)

Body region scores out of 4 points each: Head/neck 4 pts, chest 3.2 pts, upper legs 4 pts, lower legs 3.38 pts.

The passenger compartment held its shape well in the offset crash test. The clutch pedal moved forwards by 101mm and downwards 19mm. The steering wheel hub moved 38mm forward, 13mm downward and 2 mm sideways. The front ("A") pillar moved 9mm rearwards. All doors remained closed during the crash. After the crash all doors could be opened with normal effort.

The airbag cushioned the head of the driver and contact was stable. A knee airbag protected the driver's knees. The passenger's head was cushioned by the airbag.


SIDE IMPACT CRASH TEST (v4.1)

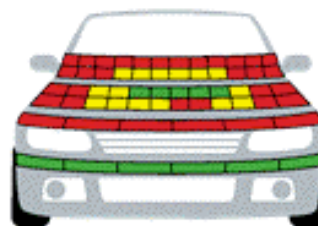
Body region scores out of 4 points each: Head 4 pts, chest 4 pts, abdomen 4 pts, pelvis 4 pts.

The vehicle was eligible for an optional pole impact test, since it had head-protecting side airbags and scored four points for the head in the side impact test. The manufacturer decided to go ahead with the pole test and the vehicle earned a further two points.

PEDESTRIAN PROTECTION: 2 Stars

The C5 was awarded no points for the protection offered by the front edge of the bumper to pedestrians' legs. The bonnet surface was also rated as predominantly poor in the area likely to be struck by an adult's head. However, the bumper scored maximum points.

PEDESTRIAN PROTECTION		
 Rated ★★☆☆ Tested by Euro NCAP v4.1	Child head impacts	4.51
	Adult head impacts	0.88
	Upper leg impacts	Zero
	Lower leg impacts	6
	Total (out of 36)	11.39



GOOD
ADEQUATE
MARGINAL

Pedestrian protection

September 2008

PO Box 4041

Manuka ACT 2603

c5_08.doc

Issued 17/09/2008



ANCAP

Crash testing for safety

AUSTRALASIAN
NEW CAR ASSESSMENT
PROGRAM

TECHNICAL DATA - CITROEN C5 - 2008 on

INJURY MEASUREMENTS

Body region	Offset Crash Test at 64km/h (v4.1)		Side Impact Crash Test at 50km/h (v4.1)
	Driver	Passenger	Driver
Head HIC	166	161	13
Acceleration (g for 3ms)	32.6	36.7	13.1
Neck - Shear (kN)	0.40	0.08	-
Tension (kN)	1.20	0.75	-
Extension (Nm)	9.4	7.5	-
Chest Accln (g for 3ms)	-	-	-
Compression (mm)	25.72	27.58	16.61
Viscous criterion (m/s)	0.08	0.21	0.07
Abdomen - Force (kN)	-	-	0.520
Pelvis - Force (kN)	-	-	1.460
Upper legs Force (kN)			
Left	0.42	0.23	
Right	0.54	0.21	
Knee displ (mm)			
Left	0.30	1.40	
Right	1.60	0.60	
Lower legs Force (kN)			
Left	1.51	1.20	
Right	1.54	1.36	
Index (Upper/Low)			
Left	0.40 /0.22	0.21 /0.54	
Right	0.20 /0.16	0.34/0.12	

Bonus points (maximum 5)

Pole Test: 2 pts

Seat belt reminders: 2 (see table below for details)

Modifiers - deductions from offset test scores

Head	No deduction
Chest	No deduction
Upper leg Variable & conc. loading	No deduction
Lower leg	No deduction
Foot score	Score 4 points

Modifiers - deductions from side impact test scores

Chest	No deduction
-------	--------------

Safety features

These specifications are subject to change. Please check with manufacturer for the latest specifications.



Driver airbag	S	Antilock (ABS) brakes / Electronic brakeforce distribution / Brake Assist	S/S/S
Passenger front airbag	S	Electronic stability control (ESC, VSC, DSC, ESP, VSA)	S#
Side airbags, front seats - chest protection	S	3 point centre rear seat belt	S
Side airbags, front seats - head protection	S	Active head restraints - front seats	S
Side airbags, rear seats - head protection	S	Intelligent seat belt reminder - driver	S
Driver knee airbag	S	Intelligent seat belt reminder - front passenger	S
Seat belt pretensioners (Front/Rear outboard)	S/X	Rear seat belt status indicator	S*

Key: * Rear seat belt reminder not eligible for bonus point

S = standard on all variants

O = optional on base variant. May be standard on higher variants

V= not available on base variant but standard or optional on higher variants

X = not available on any variant

ESC required by ANCAP for 5 star rating from 2008



ANCAP

Crash testing for safety

AUSTRALASIAN
NEW CAR ASSESSMENT
PROGRAM