

# Crash Test Results

## New Car Safety

### CITROEN C4

From 2011

Front+side+head airbags



**ANCAP**

Rated ★★★★★

**Occupant Protection**

**Occupant Protection Score 34.89 out of 37**

Variant: Hdi

Eng: 1.6 litre diesel

Kerb mass 1205 kg

Category: CAR - SMALL

Vehicles built: 2010

Tested by Euro NCAP

**Important note:** The *diesel left-hand-drive* European model was tested by Euro NCAP. Australasian specifications may vary and therefore models sold in Australasia might provide different levels of protection to those described on this page.

#### Model History and Safety Features

The tested model of Citroen C4 was introduced in Australia and New Zealand during 2011. This ANCAP 5-star rating currently applies to C4 variants with a 1.6 litre diesel engine. Further technical information is being sought about other variants.

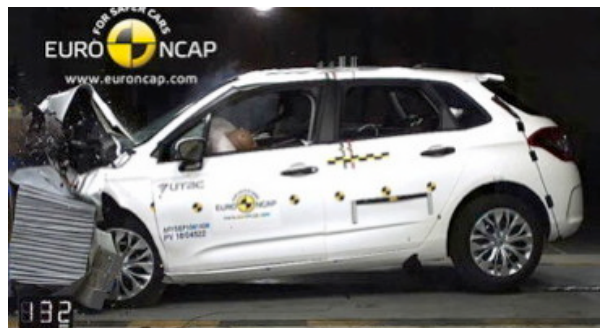
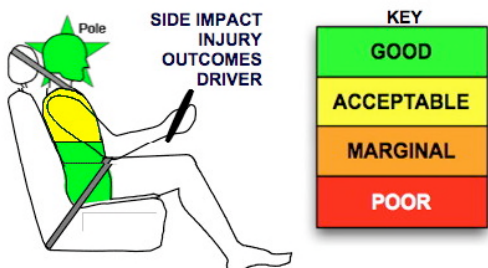
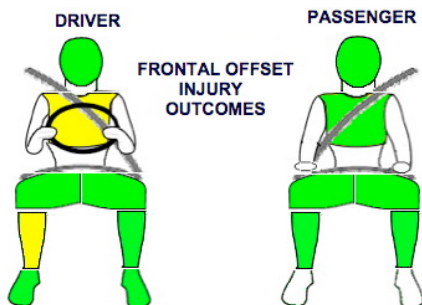
Dual front airbags, side airbags and head-protecting side curtains are standard equipment. Antilock brakes (ABS) with electronic brakeforce distribution (EBD) and Electronic Stability Control (ESC) are also standard. Intelligent seat belt reminders are fitted to both front seats.

Pretensioners are fitted to the front seat belts to reduce slack in the event of a crash.

#### OCCUPANT PROTECTION: 5 Stars

The C4 scored 15.25 out of 16 in the offset crash test. The passenger compartment held its shape well. There was a slight risk of serious chest and leg injury for the driver.

The vehicle scored 15.6 out of 16 in the side impact crash test. There was a slight risk of serious chest and abdomen injury for the driver. A further two points were earned in the pole test.



Offset crash test at 64km/h

#### FRONTAL OFFSET CRASH TEST

Body region scores out of 4 points each: Head/neck 4 pts, chest 3.43 pts, upper legs 4 pts, lower legs 3.822pts.

The passenger compartment held its shape well in the offset crash test. The brake pedal moved rearwards by 29 mm. The accelerator pedal moved upwards 14 mm. The steering wheel hub moved 4mm forward, -8mm upward and 1 mm sideways. The front ("A") pillar moved 21 mm rearwards. All doors remained closed during the crash. After the crash the driver's door could be opened with high manual effort.

The airbag cushioned the head of the driver and contact was stable. There were no knee hazards. The passenger's head was cushioned by the airbag.

#### SIDE IMPACT CRASH TEST

Body region scores out of 4 points each: Head 4 pts, chest 3.64 pts, abdomen 4 pts, pelvis 4 pts.

The vehicle was eligible for an optional pole impact test, since it had head-protecting side airbags. The vehicle earned the maximum two points in this test.

#### PEDESTRIAN PROTECTION: Marginal

The bumper area scored maximum points for the protection offered to a pedestrian's lower leg. The front edge of the bonnet offered mostly poor protection. The bonnet top where a child or small adult head would impact offered mixed levels of protection.

PEDESTRIAN PROTECTION	Child head impacts	7.91
<b>MARGINAL</b> Tested by Euro NCAP v5	Adult head impacts	Zero
	Upper leg impacts	1.46
	Lower leg impacts	6
	Total (out of 36)	15.37



NOVEMBER 2011

PO Box 4041

Manuka ACT 2603

c4\_11.doc

Issued 22/11/2011



**ANCAP**

Crash testing for safety

AUSTRALASIAN  
NEW CAR ASSESSMENT  
PROGRAM

# TECHNICAL DATA - CITROEN C4 - From 2011

## INJURY MEASUREMENTS

Body region	Offset Crash Test at 64km/h (v5)		Side Impact Crash Test at 50km/h (v5)
	Driver	Passenger	Driver
<b>Head HIC</b>	186	218	23
Acceleration (g for 3ms)	34.6	35.5	20.2
<b>Neck - Shear (kN)</b>	0.60	0.44	-
Tension (kN)	1.03	0.68	-
Extension (Nm)	14.2	11.0	-
<b>Chest Accln (g for 3ms)</b>			-
Compression (mm)	26.02	21.80	23.80
Viscous criterion (m/s)	0.07	0.05	0.21
<b>Abdomen - Force (kN)</b>	-	-	0.610
<b>Pelvis - Force (kN)</b>	-	-	2.110
<b>Upper legs Force (kN)</b>			
Left	0.31	0.30	
Right	0.07	0.60	
Knee displ (mm)			
Left	0.00	0.00	
Right	0.00	0.00	
<b>Lower legs Force (kN)</b>			
Left	2.00	1.58	
Right	1.97	1.72	
Index (Upper/Low)			
Left	0.37 /0.25	0.32 /0.23	
Right	0.44 /0.34	.32/.33	

### Bonus points (maximum 5)

Pole Test: 2 pts

Seat belt reminders: 2 (see table below for details)

### Modifiers - deductions from offset test scores

Head	No deduction
Chest	No deduction
Upper leg	No deduction
Lower leg	No deduction
Foot score	Score 4 points

### Modifiers - deductions from side impact test scores

Chest	No deduction
-------	--------------

### Safety features

These specifications are subject to change. Please check with manufacturer for the latest specifications.

Driver airbag	S	Antilock (ABS) brakes / Electronic brake distribution / Brake Assist	S/S/??
Passenger front airbag	S	Electronic stability control (ESC, VSC, DSC, ESP, VSA)	V#
Side airbags, front seats - chest protection	S	3 point seat belt for all forward-facing seats	S
Side airbags, front seats - head protection	S	Whiplash protection	Pending
Side airbags, rear seats - head protection	S	Intelligent seat belt reminder - driver	S
Driver knee airbag	X	Intelligent seat belt reminder - front passenger	S
Seat belt pretensioners (Front/Rear outboard)	S/X	Intelligent seat belt reminder - rear seats	X

Key:

S = standard on all variants

O = optional on base variant. May be standard on higher variants

V= not available on base variant but standard or optional on higher variants

X = not available on any variant

# ESC required by ANCAP for 5 star rating from 2008

