

Crash Test Results

New Car Safety

CITROEN C3

From 2010 Front+side+head airbags



ANCAP Occupant Protection
Rated ★★★★★

Occupant Protection Score 33.38 out of 37

Variant: 5 door hatch Eng: 1.4 litre diesel
Kerb mass 1070 kg Category: CAR - SMALL
Vehicles built: 2009 Tested by Euro NCAP

Important note: The *diesel left-hand-drive* European model was tested by Euro NCAP. Australasian specifications may vary and therefore models sold in Australasia might provide different levels of protection to those described on this page.

Model History and Safety Features

The tested model of Citroen C3 was introduced in Australia during 2010.

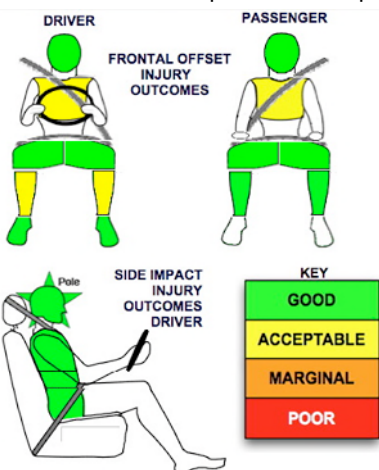
Dual front airbags, side airbags and head-protecting side curtains are standard equipment. Antilock brakes (ABS), electronic brakeforce distribution (EBD) and electronic stability control (ESC) are also standard. An intelligent seat belt reminder is fitted to the driver seat.

Pretensioners are fitted to the front seat belts to reduce slack in the event of a crash. A three point seat belt is fitted to the centre rear seat. This provides better protection than a two point (lap) seat belt.

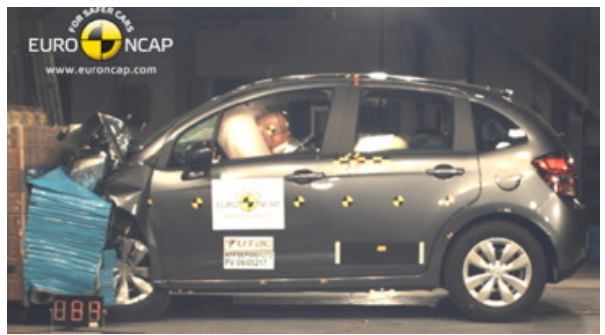
OCCUPANT PROTECTION: 5 Stars

The C3 scored 14.38 out of 16 in the offset crash test. The passenger compartment has its shape well. There was a slight risk of serious chest injury for the driver and passenger.

The vehicle scored 16 out of 16 in the side impact crash test and a further two points in the optional pole test.



Whiplash Protection



Offset crash test at 64km/h

FRONTAL OFFSET CRASH TEST

Body region scores out of 4 points each: Head/neck 4 pts, chest 2.69 pts, upper legs 4 pts, lower legs 3.69 pts.

The passenger compartment held its shape well in the offset crash test. The clutch pedal moved rearwards by 38 mm. The accelerator pedal moved downwards 31mm. The steering wheel hub moved 41mm forward, 4mm downward and 8 mm sideways. The front ("A") pillar moved 24mm forwards. All doors remained closed during the crash. After the crash the driver's door could be opened with high manual effort.

The airbag cushioned the head of the driver and contact was stable. There were no knee hazards. The passenger's head was cushioned by the airbag.

SIDE IMPACT CRASH TEST

Body region scores out of 4 points each: Head 4 pts, chest 4 pts, abdomen 4 pts, pelvis 4 pts.

The vehicle was eligible for an optional pole impact test, since it had head-protecting side airbags. The vehicle earned the maximum two points in this test.

PEDESTRIAN PROTECTION: Marginal

Good protection was provided to pedestrians' legs by the bumper and maximum points were scored. However, the front edge of the bonnet scored no points. The protection offered by the bonnet to a pedestrian's head was predominantly poor

PEDESTRIAN PROTECTION	Child head impacts	1.8
MARGINAL	Adult head impacts	4
	Upper leg impacts	Zero
	Lower leg impacts	6
	Total (out of 36)	11.8

Tested by Euro NCAP v5



FEBRUARY 2011

PO Box 4041
Manuka ACT 2603
c3_10.doc
Revised 31/3/2011



ANCAP

Crash testing for safety

AUSTRALASIAN
NEW CAR ASSESSMENT
PROGRAM

www.ancap.com.au

TECHNICAL DATA - CITROEN C3 - From 2010

INJURY MEASUREMENTS

Body region	Offset Crash Test at 64km/h (v5)		Side Impact Crash Test at 50km/h (v5)
	Driver	Passenger	Driver
Head HIC	350	333	47
Acceleration (g for 3ms)	44.4	41.9	26.0
Neck - Shear (kN)	0.42	0.37	-
Tension (kN)	1.40	1.26	-
Extension (Nm)	18.4	27.8	-
Chest Accln (g for 3ms)	-	-	-
Compression (mm)	31.16	29.24	21.40
Viscous criterion (m/s)	0.13	0.11	0.14
Abdomen - Force (kN)	-	-	0.570
Pelvis - Force (kN)	-	-	2.151
Upper legs Force (kN)	Left	0.21	0.10
	Right	0.16	0.20
Knee displ (mm)	Left	0.00	0.00
	Right	0.00	0.00
Lower legs Force (kN)	Left	2.14	1.55
	Right	0.92	1.42
Index (Upper/Low)	Left	0.47 /0.26	0.38 /0.23
	Right	0.42 /0.29	0.39/0.22

Bonus points (maximum 5)

Pole Test: 2 pts

Seat belt reminders: 1 (see table below for details)

Modifiers - deductions from offset test scores

Head	No deduction
Chest	No deduction
Upper leg	No deduction
Lower leg	No deduction
Foot score	Score 4 points

Modifiers - deductions from side impact test scores

Chest	No deduction
-------	--------------

Safety features

These specifications are subject to change. Please check with manufacturer for the latest specifications.



Driver airbag	S	Antilock (ABS) brakes / Electronic brake distribution / Brake Assist	S/S/S
Passenger front airbag	S	Electronic stability control (ESC, VSC, DSC, ESP, VSA)	S#
Side airbags, front seats - chest protection	S	3 point centre rear seat belt	S
Side airbags, front seats - head protection	S	Whiplash protection (RCAR protocol)	Marginal
Side airbags, rear seats - head protection	S	Intelligent seat belt reminder - driver	S
Driver knee airbag	X	Intelligent seat belt reminder - front passenger	X*
Seat belt pretensioners (Front/Rear outboard)	S/X	Intelligent seat belt reminder - rear seats	X

Key: * Front passenger seat belt reminder is standard in Europe

S = standard on all variants

O = optional on base variant. May be standard on higher variants

V= not available on base variant but standard or optional on higher variants

X = not available on any variant

ESC required by ANCAP for 5 star rating from 2008