

Crash Test Results

New Car Safety

CHRYSLER VOYAGER (Diesel)

2006 on Dual front + side curtains



Offset crash test at 64km/h



Occupant Protection Score 16.49* out of 37

* High risk of life-threatening chest injury in frontal offset crash

Variant: LX Premium LWB Eng: 2.8 litre diesel

Kerb weight: 2068 kg Category: LARGE CAR/MPV

Vehicles built: 2006

Important note: The *diesel* European model was tested by Euro NCAP. Australasian specifications may vary and therefore models sold in Australasia might provide different levels of protection to those described on this page. There is no diesel variant in Australia.

Model History and Safety Features

The current Chrysler Voyager was introduced in Australia during 2001 and side curtains became available in 2005.

Dual front airbags and head-protecting side curtains are standard equipment. Antilock brakes (ABS) are also standard.

The front seat belt buckles are mounted on the seats and the upper anchorages are adjustable. These features improve the fit of the seat belt. Pre-tensioners are fitted to the front seat belts to reduce slack in the event of a crash.

OCCUPANT PROTECTION: 2 Stars*

The Chrysler Voyager diesel scored 3.15 out of 16 in the offset crash test. The passenger compartment did not hold its shape well. Protection from serious chest and leg injury was poor for the driver.

The vehicle scored 15.68 out of 16 in the side impact crash test. There was a slight risk of serious abdomen injury for the driver. In the optional pole test the curtain did not deploy as intended and one point was awarded for this test. The low offset score meant that the vehicle was limited to a 2 star rating and an overall score of 16.49 (the maximum available for a 2 star rating under ANCAP protocols).

FRONTAL OFFSET CRASH TEST (v4.1)

Body region scores out of 4 points each: Head/neck 3.15 pts, chest zero pts, upper legs zero pts, lower legs zero pts.

The passenger compartment did not hold its shape well in the offset crash test. The accelerator pedal moved rearwards by 288 mm and upwards 84 mm. The steering wheel hub moved rearwards 107 mm, upwards 79 mm and sideways 2mm. The front ("A") pillar moved 90 mm rearwards. All doors remained closed during the crash. After the crash tools were required to open the driver's door.

The airbag cushioned the head of the driver and contact was stable but the driver's chest contacted the steering wheel. Steering column and dash components were a potential source of injury for the driver's knees. The passenger's head was cushioned by the airbag..

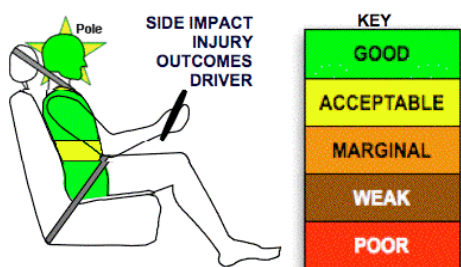
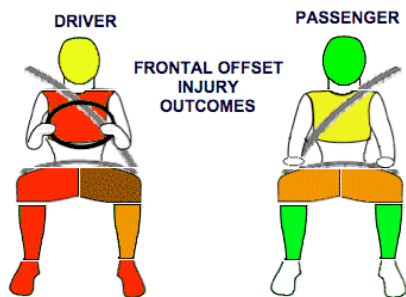
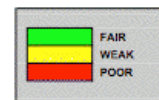
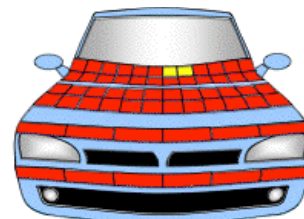
SIDE IMPACT CRASH TEST (v4.1)

Body region scores out of 4 points each: Head 4 pts, chest 4 pts, abdomen 3.68 pts, pelvis 4 pts.

The vehicle was eligible for an optional pole impact test, since it had head-protecting side airbags and scored four points for the head in the side impact test. The manufacturer decided to go ahead with the pole test but the vehicle lost one point due to an airbag deployment problem.

PEDESTRIAN PROTECTION RATING (v4.1)

PEDESTRIAN PROTECTION		
	Child head impacts	Zero
	Adult head impacts	0.350
	Upper leg impacts	Zero
	Lower leg impacts	Zero
	Total (out of 36)	0.350



June 2007

PO Box 1555
Canberra ACT
Australia 2601
voyager06.doc
Issued 6/6/07



TECHNICAL DATA - CHRYSLER VOYAGER (Diesel) - 2006 on

INJURY MEASUREMENTS

Body region	Offset Crash Test at 64km/h (v4.1)		Side Impact Crash Test at 50km/h (v4.1)
	Driver	Passenger	Driver
Head HIC	737	267	68
Acceleration (g for 3ms)	71.8	41.5	29.2
Neck - Shear (kN)	0.41	0.46	-
Tension (kN)	1.99	0.37	-
Extension (Nm)	10.7	11.8	-
Chest Accln (g for 3ms)	-	-	-
Compression (mm)	53.64	28.29	14.52
Viscous criterion (m/s)	0.85	0.13	0.12
Abdomen - Force (kN)	-	-	1.120
Pelvis - Force (kN)	-	-	0.530
Upper legs Force			
Left (kN)	5.42	0.45	
Right (kN)	6.33	2.37	
Knee displ (mm)			
Left	1.70	0.20	
Right	1.40	3.00	
Lower legs Force			
Left (kN)	1.53	1.64	
Right (kN)	1.90	1.63	
Index (Upper/Low)			
Left	0.46 /0.67	0.34 /0.14	
Right	0.36 /1.51	0.35/0.4	

Bonus points (maximum 5)

Pole Test: 1 pt

Seat belt reminders: None

Modifiers - deductions from offset test scores

Head Steer col rearward 0.85 pt deduction
 Chest Loss of structure 1 pt deduction
 Chest contact steer wheel 1 pt deduction
 Upper leg Variable & conc. loading 2 pt deduction left & right
 for driver and passenger
 Lower leg Pedal upward 0.75 pt deduction
 Foot score Pedal rearward Score zero points

Modifiers - deductions from side impact test scores

Chest No deduction
 Pole test Airbag deployment 1 pt deduction

Safety features

These specifications are subject to change. Please check with manufacturer for the latest specifications.



Driver airbag	S	Antilock (ABS) brakes / Electronic brake distribution	S/
Passenger front airbag	S	Electronic stability control (ESC, VSC, DSC, ESP, VSA)	X
Side airbags, front seats - chest protection	X	3 point centre rear seat belt	S
Side airbags, front seats - head protection	S	Active head restraints - front seats	-
Side airbags, rear seats - head protection	S	Intelligent seat belt reminder - driver	X
Driver knee airbag (standard on LHD models in Europe)	X	Intelligent seat belt reminder - front passenger	X
Front seat belt pretensioners	S	Rear seat belt status indicator	X

Key:

S = standard on all variants

O = optional on base variant. May be standard on higher variants

V= not available on base variant but standard or optional on higher variants

X = not available on any variant