

# Crash Test Results

## New Car Safety

### BMW X3

From 2011

Front+side+head airbags



Offset crash test at 64km/h

#### FRONTAL OFFSET CRASH TEST

Body region scores out of 4 points each: Head/neck 4 pts, chest 3.34 pts, upper legs 4 pts, lower legs 3.24 pts.

The passenger compartment held its shape well in the offset crash test. The brake pedal moved rearwards by 24 mm and upwards 6 mm. The steering wheel hub moved 18mm forward, 7 mm upward and 3 mm sideways. The front ("A") pillar moved 7 mm rearwards. All doors remained closed during the crash. After the crash all doors could be opened with normal effort.

The airbag cushioned the head of the driver and contact was stable. There were no knee hazards. The passenger's head was cushioned by the airbag.

#### SIDE IMPACT CRASH TEST

Body region scores out of 4 points each: Head 4 pts, chest 4 pts, abdomen 4 pts, pelvis 4 pts.

The side impact test simulates a small car striking the driver's door of the vehicle under test. It is based on a regulation test but the regulation does not apply to vehicles with a high seat height like the X3. Experience shows that such vehicles can be expected to perform well in this test and the X3 scored full marks.

The vehicle was eligible for a pole impact test, since it had head-protecting side airbags. The vehicle earned the maximum two points in this test.

#### PEDESTRIAN PROTECTION: Acceptable

The bumper provided good protection to pedestrians' legs. However, the entire front edge of the bonnet provided poor protection. In most areas likely to be struck by the head of a child, the bonnet offered only marginal or poor protection. In those areas likely to be struck by an adult's head, the protection was mostly good with some poor performing areas.

PEDESTRIAN PROTECTION	Child head impacts	5.40
<b>ACCEPTABLE</b>	Adult head impacts	7.66
	Upper leg impacts	Zero
	Lower leg impacts	6
	Total (out of 36)	19.06

Tested by Euro NCAP v5.3



**Occupant Protection Score 34.58 out of 37**

Variant: - Eng: 2 litre diesel  
 Kerb mass 1790 kg Category: SUV - MEDIUM  
 Vehicles built: 2011 Tested by Euro NCAP

**Important note:** The 4-cylinder diesel left-hand-drive European model was tested by Euro NCAP. Australasian specifications may vary and therefore models sold in Australasia might provide different levels of protection to those described on this page.

#### Model History and Safety Features

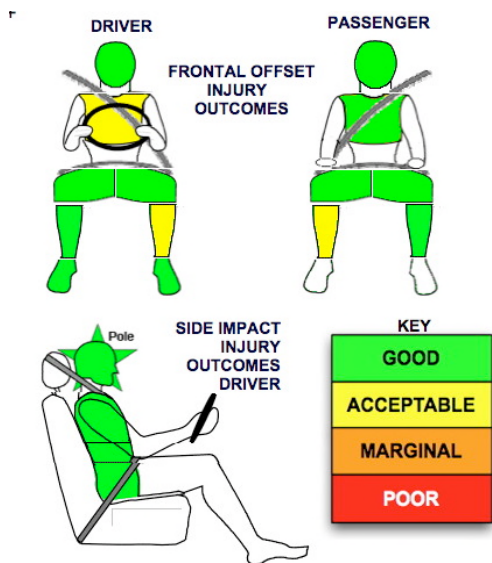
The tested model of BMW X3 was introduced in Australia during 2011. This ANCAP rating applies to X3 variants with a 4 cylinder diesel or petrol engine.

Dual front airbags, side airbags and head-protecting side curtains are standard equipment. Antilock brakes (ABS), electronic brakeforce distribution (EBD) and electronic stability control (ESC) are also standard. Intelligent seat belt reminders are fitted to both front seats.

#### OCCUPANT PROTECTION: 5 Stars

The BMW X3 scored 14.58 out of 16 in the offset crash test. The passenger compartment held its shape well. There was a slight risk of serious chest and leg injury for the driver.

The vehicle scored 16 out of 16 in the side impact crash test and a further two points in the pole test.



#### Whiplash Protection



SEPTEMBER 2011

PO Box 4041  
 Manuka ACT 2603  
 X3\_11.DOC Rated: 2011  
 Revised 25/5/2012



# TECHNICAL DATA - BMW X3 - From 2011

## INJURY MEASUREMENTS

Body region	Offset Crash Test at 64km/h (v5.1)		Side Impact Crash Test at 50km/h (v5.1)
	Driver	Passenger	Driver
<b>Head HIC</b>	146	181	12
Acceleration (g for 3ms)	33.4	32.8	11.4
<b>Neck - Shear (kN)</b>	0.50	0.46	-
Tension (kN)	0.83	0.45	-
Extension (Nm)	10.8	15.0	-
<b>Chest Accln (g for 3ms)</b>	-	-	-
Compression (mm)	26.64	22.00	15.10
Viscous criterion (m/s)	0.09	0.08	0.12
<b>Abdomen - Force (kN)</b>	-	-	0.440
<b>Pelvis - Force (kN)</b>	-	-	0.550
<b>Upper legs Force (kN)</b>			
Left	0.30	1.30	
Right	0.96	0.10	
Knee displ (mm)			
Left	0.00	0.00	
Right	0.40	0.10	
<b>Lower legs Force (kN)</b>			
Left	1.44	1.58	
Right	1.89	1.64	
Index (Upper/Low)			
Left	0.52 /0.25	0.40 /0.16	
Right	0.30 /0.26	0.57/0.24	

### Bonus points (maximum 5)

Pole Test: 2 pts

Seat belt reminders: 2 (see table below for details)

### Modifiers - deductions from offset test scores

Head	No deduction
Chest	No deduction
Upper leg Variable & conc. loading	No deduction
Lower leg	No deduction
Foot score	Score 4 points

### Modifiers - deductions from side impact test scores

Chest	No deduction
-------	--------------

### Safety features

These specifications are subject to change. Please check with manufacturer for the latest specifications.



Driver airbag	S	Antilock (ABS) brakes / Electronic brake distribution / Brake Assist	S/S/S
Passenger front airbag	S	Electronic stability control (ESC, VSC, DSC, ESP, VSA)	S#
Side airbags, front seats - chest protection	S	3 point centre rear seat belt	S
Side airbags, front seats - head protection	S	Whiplash protection (RCAR protocol)	Good
Side airbags, rear seats - head protection		Intelligent seat belt reminder - driver	S
Driver knee airbag	X	Intelligent seat belt reminder - front passenger	S
Seat belt pretensioners (Front/Rear outboard)	S/X	Intelligent seat belt reminder - rear seats	X

Key:

S = standard on all variants

O = optional on base variant. May be standard on higher variants

V= not available on base variant but standard or optional on higher variants

X = not available on any variant

# ESC required by ANCAP for 5 star rating from 2008