

# Crash Test Results

## New Car Safety

### BMW 3-SERIES (diesel)

From 2012 Front+side+head airbags



**ANCAP**

Rated ★★★★★

**Occupant Protection**

**Occupant Protection Score 36.76 out of 37**

Variant: 320d sedan Eng: 2 litre diesel, manual

Kerb mass 1500 kg Category: CAR - MEDIUM

Vehicles built: 2012 Tested by Euro NCAP

**Important note:** The *diesel left-hand-drive* European model was tested by Euro NCAP. Australasian specifications may vary and therefore models sold in Australasia might provide different levels of protection to those described on this page.

#### Model History and Safety Features

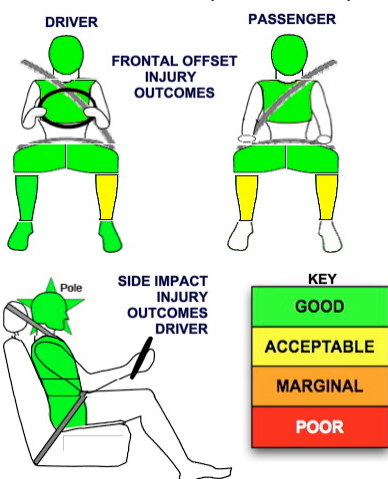
The tested model of BMW 3-Series was introduced in Australia during 2012. This ANCAP rating applies to the 320d diesel variant.

Dual front airbags, side airbags and head-protecting side curtains are standard equipment. Antilock brakes (ABS), electronic brakeforce distribution (EBD) and electronic stability control (ESC) are also standard. Intelligent seat belt reminders are fitted to all seats.

#### OCCUPANT PROTECTION: 5 Stars

The BMW 3-Series scored 15.76 out of 16 in the offset crash test. The passenger compartment held its shape well. There was a slight risk of serious leg injury for the driver and passenger.

The vehicle scored 16 out of 16 in the side impact crash test and a further two points in the pole test.



#### Whiplash Protection



Offset crash test at 64km/h

#### FRONTAL OFFSET CRASH TEST

Body region scores out of 4 points each: Head/neck 4 pts, chest 4 pts, upper legs 4 pts, lower legs 3.76 pts.

The passenger compartment held its shape well in the offset crash test. The brake pedal moved rearwards by 14 mm. The accelerator pedal moved downwards 5mm. The steering wheel hub moved 70mm forward, 23mm downward and 5 mm sideways. The front ("A") pillar moved 1 mm rearwards. All doors remained closed during the crash. After the crash the driver's door could be fully opened with high manual effort.

The airbag cushioned the head of the driver and contact was stable. There were no knee hazards. The passenger's head was cushioned by the airbag.

#### SIDE IMPACT CRASH TEST

Body region scores out of 4 points each: Head 4 pts, chest 4 pts, abdomen 4 pts, pelvis 4 pts.

The vehicle was eligible for a pole impact test, since it had head-protecting side airbags. The vehicle earned the maximum two points in this test.

#### PEDESTRIAN PROTECTION: Good

Both the bumper and the front edge of the bonnet provided good protection to pedestrians and the car scored maximum points in these areas. In almost all areas where a child's head might strike, the bonnet provided good protection but was predominantly poor in those areas likely to be struck by an adult's head.

PEDESTRIAN PROTECTION		
<b>GOOD</b> Tested by Euro NCAP v5.3	Child head impacts	11.92
	Adult head impacts	4
	Upper leg impacts	6
	Lower leg impacts	6
	Total (out of 36)	27.92



JUNE 2012

PO Box 4041

Manuka ACT 2603

bmw3\_12.doc Rated: 2012

Issued 30/5/2012



**ANCAP**

Crash testing for safety

AUSTRALASIAN  
NEW CAR ASSESSMENT  
PROGRAM

# TECHNICAL DATA - BMW 3-SERIES - From 2012

## INJURY MEASUREMENTS

Body region	Offset Crash Test at 64km/h (v5.2)		Side Impact Crash Test at 50km/h (v5.2)
	Driver	Passenger	Driver
<b>Head HIC</b>	185	329	42
Acceleration (g for 3ms)	34.7	48.0	22.0
<b>Neck - Shear (kN)</b>	0.44	0.64	-
Tension (kN)	1.04	0.52	-
Extension (Nm)	6.1	10.9	-
<b>Chest Accln (g for 3ms)</b>	-	-	-
Compression (mm)	20.93	19.19	19.08
Viscous criterion (m/s)	0.08	0.06	0.15
<b>Abdomen - Force (kN)</b>	-	-	0.620
<b>Pelvis - Force (kN)</b>	-	-	0.620
<b>Upper legs Force (kN)</b>			
Left	0.30	0.30	
Right	0.35	0.40	
Knee displ (mm)			
Left	0.10	0.00	
Right	0.00	0.00	
<b>Lower legs Force (kN)</b>			
Left	1.46	2.36	
Right	1.81	2.14	
Index (Upper/Low)			
Left	0.41 /0.21	0.36 /0.16	
Right	0.30 /0.22	0.31/0.14	

### Bonus points (maximum 5)

Pole Test: 2 pts

Seat belt reminders: 3 (see table below for details)

### Modifiers - deductions from offset test scores

Head	No deduction
Chest	No deduction
Upper leg	No deduction
Lower leg	No deduction
Foot score	Score 4 points

### Modifiers - deductions from side impact test scores

Chest	No deduction
-------	--------------

### Safety features

These specifications are subject to change. Please check with manufacturer for the latest specifications.



Driver airbag	S	Antilock (ABS) brakes / Electronic brake distribution / Brake Assist	S/S/S
Passenger front airbag	S	Electronic stability control (ESC, VSC, DSC, ESP, VSA)	S#
Side airbags, front seats - chest protection	S	3 point seat belt for all forward-facing seats	S
Side airbags, front seats - head protection	S	Whiplash protection (RCAR protocol)	Good
Side airbags, rear seats - head protection	S	Intelligent seat belt reminder - driver	S
Driver knee airbag	X	Intelligent seat belt reminder - front passenger	S
Seat belt pretensioners (Front/Rear outboard)	S/X	Intelligent seat belt reminder - rear seats	S

Key:

S = standard on all variants

O = optional on base variant. May be standard on higher variants

V= not available on base variant but standard or optional on higher variants

X = not available on any variant

# ESC required by ANCAP for 5 star rating from 2008