

Crash Test Results

New Car Safety

AUDI Q3 (Diesel FWD)

From 2012 Front+side+head airbags



Offset crash test at 64km/h (Euro NCAP)



ANCAP

Rated ★★★★★

Occupant Protection

Occupant Protection Score 35.15 out of 37

Variant: FWD

Eng: 2.0 diesel

Kerb mass 1520 kg

Category: SUV - MEDIUM

Vehicles built: 2011

Tested by Euro NCAP

Important note: The diesel front-wheel-drive left-hand-drive European model was tested by Euro NCAP. Australasian specifications may vary and therefore models sold in Australasia might provide different levels of protection to those described on this page.

Model History and Safety Features

The tested model of Audi Q3 was introduced in Australia and New Zealand during 2012. This ANCAP rating currently applies to the front-wheel-drive diesel variant.

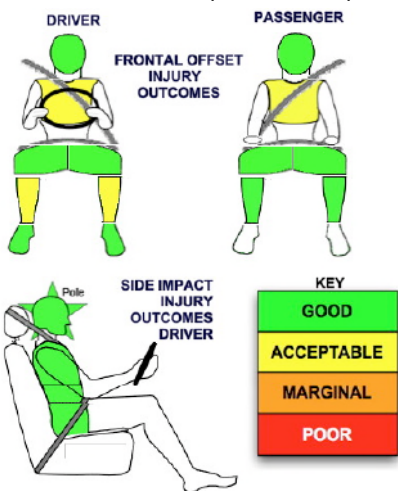
Dual front airbags, side airbags and head-protecting side curtains are standard equipment. Antilock brakes (ABS), electronic brakeforce distribution (EBD) and electronic stability control (ESC) are also standard. Intelligent seat belt reminders are fitted to both front seats (all seats have seat belt reminders in Europe).

Pretensioners are fitted to the front seat belts to reduce slack in the event of a crash.

OCCUPANT PROTECTION: 5 Stars

The AUDI Q3 scored 15.15 out of 16 in the offset crash test. The passenger compartment held its shape well. There was a slight risk of serious chest injury for the driver and passenger and a slight risk of serious leg injury for the driver.

The vehicle scored 16 out of 16 in the side impact crash test and a further two points in the pole test.



Whiplash Protection (RCAR Protocol)



FRONTAL OFFSET CRASH TEST

Body region scores out of 4 points each: Head/neck 4 pts, chest 3.73 pts, upper legs 4 pts, lower legs 3.42 pts.

The passenger compartment held its shape well in the offset crash test. The brake pedal moved rearwards by 19 mm and upwards 10 mm. The steering wheel hub moved 27mm forward, 7mm downward and 2 mm sideways. The front ("A") pillar moved 2 mm rearwards. All doors remained closed during the crash. After the crash the driver's door could be opened with high manual effort.

The airbag cushioned the head of the driver and contact was stable. There were no knee hazards. The passenger's head was cushioned by the airbag.

SIDE IMPACT CRASH TEST

Body region scores out of 4 points each: Head 4 pts, chest 4 pts, abdomen 4 pts, pelvis 4 pts.

The side impact test simulates a small car striking the driver's door of the vehicle under test. It is based on a regulation test but the regulation does not apply to vehicles with a high seat height like the Q3. Experience shows that such vehicles can be expected to perform well in this test and the Q3 scored full marks.

The vehicle was eligible for a pole impact test, since it had head-protecting side airbags. The vehicle earned the maximum two points in this test.

PEDESTRIAN PROTECTION: Acceptable

The bumper scored maximum points for the protection offered to pedestrians' legs. The front edge of the bonnet was poor in all areas tested and scored no points. In those areas likely to be struck by a child's head, protection was predominantly good but was poor in most areas likely to be struck by the head of an adult.

PEDESTRIAN PROTECTION	Child head impacts	9.93
ACCEPTABLE	Adult head impacts	2.85
	Upper leg impacts	Zero
	Lower leg impacts	6
	Total (out of 36)	18.78

Tested by Euro NCAP v5.3



AUGUST 2012

PO Box 4041

Manuka ACT 2603

q3_12.doc Rated: 2012

Issued 15/8/2012



ANCAP

Crash testing for safety

AUSTRALASIAN
NEW CAR ASSESSMENT
PROGRAM

TECHNICAL DATA - AUDI Q3 - From 2012

INJURY MEASUREMENTS

Body region	Offset Crash Test at 64km/h (v5.2)		Side Impact Crash Test at 50km/h (v5.2)
	Driver	Passenger	Driver
Head HIC	330	178	47
Acceleration (g for 3ms)	41.4	33.2	26.8
Neck - Shear (kN)	0.48	0.50	-
Tension (kN)	1.08	0.71	-
Extension (Nm)	13.0	19.1	-
Chest Accln (g for 3ms)	-	-	-
Compression (mm)	22.92	23.90	15.59
Viscous criterion (m/s)	0.07	0.06	0.11
Abdomen - Force (kN)	-	-	0.370
Pelvis - Force (kN)	-	-	0.650
Upper legs Force (kN)			
Left	0.09	0.60	
Right	1.05	0.10	
Knee displ (mm)			
Left	0.00	0.00	
Right	4.60	0.10	
Lower legs Force (kN)			
Left	1.99	1.60	
Right	2.80	1.12	
Index (Upper/Low)			
Left	0.44 /0.18	0.29 /0.17	
Right	0.53 /0.45	0.27/0.14	

Bonus points (maximum 5)

Pole Test: 2 pts

Seat belt reminders: 2 (see table below for details)

Modifiers - deductions from offset test scores

Head	No deduction
Chest	No deduction
Upper leg \	No deduction
Lower leg	No deduction
Foot score	Score 4 points

Modifiers - deductions from side impact test scores

Chest	No deduction
-------	--------------

Safety features

These specifications are subject to change. Please check with manufacturer for the latest specifications.



Driver airbag	S	Antilock (ABS) brakes / Electronic brake distribution / Brake Assist	S/S/S
Passenger front airbag	S	Electronic stability control (ESC, VSC, DSC, ESP, VSA)	S#
Side airbags, front seats - chest protection	S	3 point seat belt for all forward-facing seats	S
Side airbags, front seats - head protection	S	Whiplash protection (RCAR protocol)	Good
Side airbags, rear seats - head protection	S	Intelligent seat belt reminder - driver	S
Driver knee airbag	X	Intelligent seat belt reminder - front passenger	S
Seat belt pretensioners (Front/Rear outboard)	S/X	Intelligent seat belt reminder - rear seats	X @

Key: @ Intelligent seat belt reminders for all seats in Europe

S = standard on all variants

O = optional on base variant. May be standard on higher variants

V= not available on base variant but standard or optional on higher variants

X = not available on any variant

ESC required by ANCAP for 5 star rating from 2008