

Crash Test Results

New Car Safety

AUDI A4 (LHD)

2008 on

Front+side+head airbags



Offset crash test at 64km/h

FRONTAL OFFSET CRASH TEST (v4.1)

Body region scores out of 4 points each: Head/neck 4 pts, chest 3.67 pts, upper legs 3 pts, lower legs 3.77 pts.

The passenger compartment held its shape well in the offset crash test. The brake pedal moved rearwards by 6 mm. The clutch pedal moved upwards 4 mm. The steering wheel hub moved 49mm forward, 15mm downward and 1 mm sideways. The front ("A") pillar moved 1 mm rearwards. All doors remained closed during the crash. After the crash all doors could be opened with normal effort.

The airbag cushioned the head of the driver and contact was stable. The side curtain deployed. Steering column components were a potential source of injury for the driver's knees. The passenger's head was cushioned by the airbag.

SIDE IMPACT CRASH TEST (v4.1)

Body region scores out of 4 points each: Head 4 pts, chest 4 pts, abdomen 4 pts, pelvis 4 pts.

The vehicle was eligible for an optional pole impact test, since it had head-protecting side airbags and scored four points for the head in the side impact test. The manufacturer decided to go ahead with the pole test and the vehicle earned a further two points.

PEDESTRIAN PROTECTION: 2 Stars

The bumper scored maximum points for its protection of pedestrian legs but the front edge of the bonnet scored none. The bonnet was rated as predominantly poor for the protection it offered to the head of a struck pedestrian.



Occupant Protection Score 34.45 out of 37

Variant: sedan

Eng: 1.8 litre (4 cyl)

Kerb weight: 1610 kg

Category: Large car

Vehicles built: 2008

Tested by Euro NCAP

Important note: The *left-hand-drive* European model was tested by Euro NCAP. Australasian specifications may vary and therefore models sold in Australasia might provide different levels of protection to those described on this page.

Model History and Safety Features

The tested model of Audi A4 was introduced in Australia during 2008.

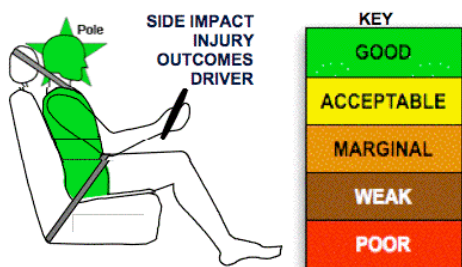
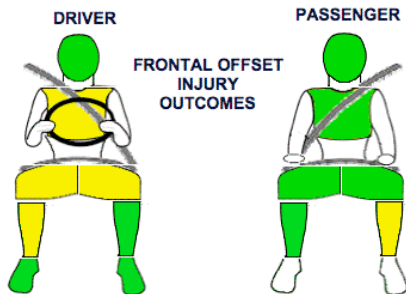
Dual front airbags, side airbags (front and rear) and head-protecting side curtains are standard equipment. Antilock brakes (ABS), electronic brake distribution (EBD) and electronic stability control (ESC) are also standard. Intelligent seat belt reminders are fitted to both front seats.


The front seat belt buckles are mounted on the seats and the upper anchorages are adjustable. These features improve the fit of the seat belt. Pretensioners are fitted to the front seat belts to reduce slack in the event of a crash. All seat belts have load limiters. A three point seat belt is fitted to the centre rear seat. This provides better protection than a two point (lap) seat belt.

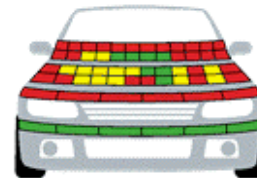
OCCUPANT PROTECTION: 5 Stars

The Audi A4 scored 14.45 out of 16 in the offset crash test. The passenger compartment held its shape well. There was a slight risk of serious chest and leg injury for the driver.

The vehicle scored 16 out of 16 in the side impact crash test and a further two points in the optional pole test.



PEDESTRIAN PROTECTION		
 Rated ★★☆☆☆ Tested by Euro NCAP	Child head impacts	5.27
	Adult head impacts	2.68
	Upper leg impacts	Zero
	Lower leg impacts	6
	Total (out of 36)	13.95



GOOD
ADEQUATE
MARGINAL

Pedestrian protection

July 2008

PO Box 4041

Manuka ACT 2603

a4_08.doc

Issued 27/6/2008



ANCAP

Crash testing for safety

AUSTRALASIAN
NEW CAR ASSESSMENT
PROGRAM

TECHNICAL DATA - AUDI A4 - 2008 on

INJURY MEASUREMENTS

Body region	Offset Crash Test at 64km/h (v4.1)		Side Impact Crash Test at 50km/h (v4.1)
	Driver	Passenger	Driver
Head HIC	198	257	44
Acceleration (g for 3ms)	38.1	36.8	21.0
Neck - Shear (kN)	0.64	0.31	-
Tension (kN)	0.76	0.60	-
Extension (Nm)	10.4	18.1	-
Chest Accln (g for 3ms)	-	-	-
Compression (mm)	24.27	15.45	13.94
Viscous criterion (m/s)	0.11	0.04	0.05
Abdomen - Force (kN)	-	-	0.470
Pelvis - Force (kN)	-	-	1.100
Upper legs Force (kN)			
Left	0.08	0.11	
Right	0.00	0.10	
Knee displ (mm)			
Left	0.00	0.00	
Right	0.00	0.00	
Lower legs Force (kN)			
Left	1.66	2.34	
Right	2.10	1.96	
Index (Upper/Low)			
Left	0.32 /0.11	0.43 /0.36	
Right	0.45 /0.33	0.28/0.14	

Bonus points (maximum 5)

Pole Test: 2 pts

Seat belt reminders: 2 (see table below for details)

Modifiers - deductions from offset test scores

Head	No deduction
Chest	No deduction
Upper leg Variable loading	1 pt deduction Left & Right
Lower leg	No deduction
Foot score	Score 4 points

Modifiers - deductions from side impact test scores

Chest	No deduction
-------	--------------

Safety features

These specifications are subject to change. Please check with manufacturer for the latest specifications.



Driver airbag	S	Antilock (ABS) brakes / Electronic brake distribution / Brake Assist	S/S/S
Passenger front airbag	S	Electronic stability control (ESC, VSC, DSC, ESP, VSA)	S#
Side airbags, front seats - chest protection	S	3 point centre rear seat belt	S
Side airbags, front seats - head protection	S	Active head restraints - front seats	S
Side airbags, rear seats - head & chest protection	S	Intelligent seat belt reminder - driver	S
Driver knee airbag	X	Intelligent seat belt reminder - front passenger	S
Seat belt pretensioners (Front/Rear outboard)	S	Rear seat belt status indicator	X

Key:

S = standard on all variants

O = optional on base variant. May be standard on higher variants

V= not available on base variant but standard or optional on higher variants

X = not available on any variant

ESC required by ANCAP for 5 star rating from 2008