

ANCAP Safety Rating: AUDI A4 (October 2015 - onwards)



Frontal offset test at 64km/h (copyright Euro NCAP)

This ANCAP safety rating applies to:

Make / Model	Audi A4
Year Range	October 2015 - onwards
Variant(s)*	Applies to all variants with 4 cylinder engines
Vehicle Type	Medium Car

The tested model of Audi A4 was introduced in Australia and New Zealand in February 2016. This ANCAP safety rating applies to all variants with 4 cylinder engines built from 26th October 2015.

Dual frontal airbags are standard. Side chest and side head airbags (curtains) are also standard for front and second row outboard positions. Electronic Brake Distribution (EBD), Emergency Brake Assist (EBA), Autonomous Emergency Braking (AEB), Exit Warning, and a manually set speed limiter are standard. Advanced seat belt reminders are fitted to all seats.

Injury Outcomes.

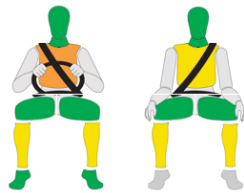
Full Width Frontal

Driver Rear Passenger



Frontal Offset

Driver Front Passenger



Side Impact

Driver



Pole

Driver



Whiplash Protection



	GOOD
	ACCEPTABLE
	MARGINAL
	POOR

Test Results Summary.

Airbags	Dual Frontal, Side, Head
Adult Occupant Protection	90% (34.5 out of 38)
- Full Width Frontal Test [#]	7.04 (out of 8)
- Frontal Offset Test [#]	7.10 (out of 8)
- Side Impact Test [#]	8.00 (out of 8)
- Pole Test [#]	7.01 (out of 8)
- Whiplash Protection Test	2.35 (out of 3)
- AEB (City)	3.00 (out of 3)
Child Occupant Protection	87% (43.0 out of 49)
Safety Assist	75% (9.9 out of 13)
- Speed Assistance System	1.33 (out of 3)
- ESC	3.00 (out of 3)
- Seat Belt Reminders	3.00 (out of 3)
- Lane Support System	0.00 (out of 1)
- AEB (Interurban)	2.52 (out of 3)
Pedestrian Protection	75% (27.3 out of 36)
ANCAP Safety Rating	★★★★★
Rating Year[^]	2015

Adult Occupant Protection.

Full Width Frontal Test

Each body region is scored out of 4 points

Driver		Rear Passenger	
Head:	4.00 points	Head:	4.00 points
Neck:	4.00 points	Neck:	3.52 points
Chest:	2.74 points	Chest:	1.91 points
Upper legs:	4.00 points	Upper legs:	4.00 points

Frontal Offset Test

Each body region is scored out of 4 points

Driver	
Head / neck	4.00 points
Chest:	2.64 points
Upper legs:	4.00 points
Lower legs	3.911 points

The passenger compartment held its shape well in the offset test. Pedal and steering wheel displacements were controlled. Driver and passenger contact with the airbags was stable. All doors remained closed during the crash and could be opened with normal effort.

Side Impact Test

Each body region is scored out of 4 points

Side Impact Test		Pole Test	
Head:	4.00 points	Head:	4.00 points
Chest:	4.00 points	Chest:	2.02 points
Abdomen:	4.00 points	Abdomen:	4.00 points
Pelvis:	4.00 points	Pelvis:	4.00 points

Good protection was provided for the driver in the side and pole impact tests. The side airbags performed well.

Whiplash Protection

Front:	1.60 points
Rear:	0.75 points
AEB (City):	3.0 points

[#] Scaled scores. Total test score out of 16.00 points.

ANCAP Safety Rating: AUDI A4 (October 2015 - onwards)



Child Occupant Protection.

Crash Test Performance

18 month old child:	12 points
3 year old child:	12 points

Child Safety Features

Safety features:	7 points
Installation check:	12 points

NOTE: The child restraints tested by Euro NCAP are relevant to the European market. For Australasian consumers, this information should be used as a guide to vehicle features only. For more detailed information about Australian child restraints visit childcarseats.com.au.

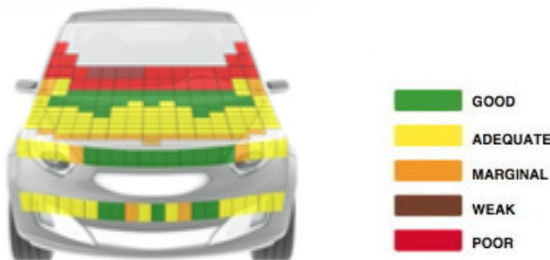
Pedestrian Protection.

Pedestrian Test

Scored out of 36 points:

Adult & child head impacts:	16.58 points
Upper leg impacts:	5.46 points
Lower leg impacts:	5.32 points

This vehicle scored 27.35 out of 36 points (Acceptable). The A4 has an 'active' bonnet fitted as standard. Adequate results were recorded in almost all areas tested however some good areas were recorded on the bonnet and bumper and the upper bonnet/windscreen protection was predominantly poor. (Tested by Euro NCAP v8)



Score Deductions.

Deductions from full width frontal test scores

Neck:	No deductions
Head:	No deductions
Chest:	No deductions
Upper legs:	No deductions

Deductions from frontal offset test scores

Head / neck:	No deductions
Chest:	No deductions
Upper legs:	No deductions
Lower legs:	No deductions

Deductions from side impact test score

Chest:	No deductions
--------	---------------

Deductions from pole test score

Head:	No deductions
-------	---------------

Safety Features & Technologies.

Descriptions of each of these safety features and safety assist technologies (SAT) and detail on fitting requirements for each star rating level can be found at ancap.com.au.

Safety Feature / Safety Assist Technology	Availability
Seat belts (three-point) for all forward-facing seats	S
Seat belt pretensioners (front)	S
Seat belt pretensioners (rear outboard)	S
Intelligent seat belt reminder (driver)	S
Intelligent seat belt reminder (front passenger)	S
Intelligent seat belt reminder (2 nd row seats)	S
Airbag - Front (driver)	S
Airbag - Front (passenger)	S
Airbag - Side, chest protection (front seats)	S
Airbag - Side, chest protection (2 nd row seats)	S
Airbag - Side, head protection (front seats)	S
Airbag - Side, head protection (2 nd row seats)	S
Airbag - Knee (driver)	X
Airbag - Knee (front passenger)	X
Head restraints for all seats	S
Adaptive cruise control (ACC)	O
Antilock braking system (ABS)	S
AEB (Autonomous emergency braking) - City	S
AEB - Interurban	S
AEB - Vulnerable road user*	S
Electronic brakeforce distribution (EBD)	S
Electronic stability control (ESC)	S
Emergency brake assist (EBA)	S
Lane support system (LSS)	O
Daytime running lights (DRL)	S
Hill launch assist	S
Reversing collision avoidance	S
Tyre pressure monitoring system (TPMS)	S
Fatigue reminder	S
Blind spot assist	S
Intelligent speed assistance (ISA)	X
Manual speed assistance (MSA)	S
Speed limit information function (SLIF)	S
Exit warning	S

These specifications are subject to change. Please check with the manufacturer for the latest specifications.

S = Standard on all variants.

O = Optional on base variant. May be standard on higher variants.

V = Not available on base variant but standard or optional on higher variants.

X = Not available on any variant.

E = Available in Europe / USA but not available on any Australasian variant.

* Not tested by Euro NCAP.

ANCAP Safety Rating: AUDI A4 (October 2015 - onwards)



Safety Assist.

Speed Assistance System (SAS)

AVAILABILITY - Scored 1.3 out of 3 points

Speed information (sign recognition):	Standard (in Australasia)
Speed assistance (manual):	Standard
Intelligent Speed Assistance	Not available in Australasia

Electronic Stability Control (ESC)

Scored 3 out of 3 points

AEB (Interurban)

Scored 2.525 out of 3 points

Autonomous emergency braking:	1.34 out of 1.5
Forward collision warning:	0.81 out of 1.0
Human machine interface:	0.375 out of 0.5

Seat Belt Reminder (SBR)

Scored 3 out of 3 points

Driver and passenger:	Pass
Rear:	Pass

Lane Support Systems (LSS)

Scored 0 out of 1 point

Approaching a stationary vehicle 13.96 out of 18 for Forward Collision Warning (FCW)



Approaching a slow moving vehicle 11 out of 11 for AEB, 10.06 out of 11 for FCW



Approaching a braking vehicle with short headway 1.48 out of 2 for AEB, 1.39 out of 2 for FCW



Approaching a braking vehicle with long headway 1.66 out of 2 for AEB, 1.58 out of 2 for FCW



ANCAP Safety Rating: AUDI A4 (October 2015 - onwards)



ANCAP

Safety ★★★★★



Injury Values & Measurements.

Body Region	Frontal offset test at 64km/h (v7.0.1)		Full width frontal test at 50km/h (v7.0.1)		Side impact test at 50km/h (v7.0.1)	Pole test at 29km/h (v7.0.1)
	Driver	Front Passenger	Driver	Rear Passenger	Driver	Driver
Head						
HIC	132.71	86.37	195.79	420.16	52.28	398.02
Acceleration (g for 3ms)	40.08	32.71	48.94	62.29	26.95	64.42
Neck						
Shear (kN)	0.54	0.38	0.72	1.43	-	-
Tension (kN)	1.06	0.70	1.19	1.97	-	-
Extension (Nm)	11.69	16.69	25.56	13.65	-	-
Chest						
Acceleration (g for 3ms)	-	-	-	-	-	-
Compression (mm)	28.82	25.87	25.59	30.52	25.91	38.92
Viscous criterion (m/s)	0.09	0.12	0.14	0.12	0.22	0.43
Abdomen						
Compression (mm)	-	-	-	-	16.40	26.13
Pelvis						
Force (kN)	-	-	-	-	0.67	1.23
Upper legs						
Femur force left (kN)	0.27	0.07	0.01	0.10		
Femur force right (kN)	0.09	0.10	0.02	0.17		
Knee displacement left (mm)	0.03	0.05	0.00	2.42		
Knee displacement right (mm)	0.00	0.07	0.42	2.42		
Lower legs						
Force left (kN)	1.58	2.12	-	-		
Force right (kN)	1.72	1.78	-	-		
Index (upper / lower) left	0.41/0.17	0.50/0.44	-	-		
Index (upper / lower) right	0.42/0.37	0.41/0.15	-	-		
Intrusion Measurements						
Steering column						
Forward (mm)	50	-	-	-		
Downward (mm)	25	-	-	-		
Sideways (mm)	2	-	-	-		
Pedals						
Brake - rearward (mm)	8	-	-	-		
Accelerator - downward (mm)	12	-	-	-		
A-Pillar						
Rearward (mm)	0	-	-	-		

* ANCAP safety ratings do not automatically extend to variants that have different body styles, engine configurations, driven wheels or occupant restraint systems (e.g. fewer airbags). In these cases, ANCAP considers technical evidence submitted by manufacturers before deciding on extending a rating to additional variants of a model. For further information about the application of ANCAP safety ratings to model variants, see the ANCAP Variant Policy.

^ The Rating Year denotes the year requirements against which a vehicle has been assessed. The Rating Year is determined by ANCAP and may be based on the year in which a new vehicle model is first launched into the Australian and/or New Zealand markets; the year in which the vehicle was tested (if tested by Euro NCAP); or, for vehicles which hold an existing ANCAP safety rating, the year in which the rating was updated (or earlier applicable year).

Assessment Details.

Tested Make / Model	Audi A4 2.0 TDI S tronic, LHD
Tested Vehicle(s) Built	2015
Tested Body Type	4 door saloon
Tested Vehicle Kerb Weight	1564 kg
Tested Vehicle Engine	2 litre diesel
Tested By	Euro NCAP
Assessed By	Euro NCAP
Document Reference	A4_16
Document Created / Revised	17 February 2016
Rating Published	23 February 2016
Rating Updated	N/A

