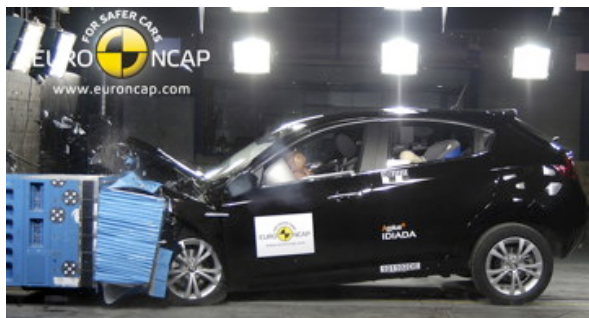


# Crash Test Results

## New Car Safety

### ALFA ROMEO GIULIETTA

From 2011 Front+side+head airbags



Offset crash test at 64km/h



**ANCAP** Occupant Protection  
Rated ★★★★★

**Occupant Protection Score** 36.44 out of 37

Variant: LT JTD

Eng: 1.6 diesel

Kerb mass 1330 kg

Category: CAR - MEDIUM

Vehicles built: 2010

Tested by Euro NCAP

**Important note:** The *diesel left-hand-drive* European model was tested by Euro NCAP. Australasian specifications may vary and therefore models sold in Australasia might provide different levels of protection to those described on this page.

#### Model History and Safety Features

The tested model of Alfa Romeo Giulietta was introduced in Australia during 2011.

Dual front airbags, side airbags and head-protecting side curtains are standard equipment. Antilock brakes (ABS), electronic brakeforce distribution (EBD) and electronic stability control (ESC) are also standard. Intelligent seat belt reminders are fitted to all seats.

Pretensioners are fitted to the front seat belts to reduce slack in the event of a crash. A three point seat belt is fitted to the centre rear seat. This provides better protection than a two point (lap) seat belt.

#### OCCUPANT PROTECTION: 5 Stars

The Giulietta scored 15.44 out of 16 in the offset crash test. The passenger compartment held its shape well. There was a slight risk of serious leg injury for the driver and passenger.

The vehicle scored 16 out of 16 in the side impact crash test and a further two points in the optional pole test.

#### FRONTAL OFFSET CRASH TEST

Body region scores out of 4 points each: Head/neck 4 pts, chest 4 pts, upper legs 4 pts, lower legs 3.44 pts.

The passenger compartment held its shape well in the offset crash test. The brake pedal moved rearwards by 11 mm. The accelerator pedal moved downwards 8mm. The steering wheel hub moved 36mm forward, 33mm downward and 7 mm sideways. The front ("A") pillar moved 4 mm rearwards. All doors remained closed during the crash. After the crash the driver's door could be opened with high manual effort.

The airbag cushioned the head of the driver and contact was stable. There were no knee hazards. The passenger's head was cushioned by the airbag.

#### SIDE IMPACT CRASH TEST

Body region scores out of 4 points each: Head 4 pts, chest 4 pts, abdomen 4 pts, pelvis 4 pts.

The vehicle was eligible for a pole impact test, since it had head-protecting side airbags. The vehicle earned the maximum two points in this test.

#### PEDESTRIAN PROTECTION: Acceptable

The Giulietta scored maximum points for the protection offered by the bumper to pedestrians' legs. Marginal protection was provided by the front edge of the bonnet. In most areas likely to be struck by the head of a struck child, the bonnet offered good protection. However, for an adult's head, the bonnet offered poor protection in most areas.

PEDESTRIAN PROTECTION	Child head impacts	10.99
<b>ACCEPTABLE</b>	Adult head impacts	2.5
	Upper leg impacts	3.14
	Lower leg impacts	6
	Total (out of 36)	22.62

Tested by Euro NCAP v5



FEBRUARY 2011

PO Box 4041

Manuka ACT 2603

giulietta11.doc

Issued 31/3/2011



**ANCAP**

Crash testing for safety

AUSTRALASIAN  
NEW CAR ASSESSMENT  
PROGRAM

# TECHNICAL DATA - ALFA ROMEO GIULIETTA - From 2011

## INJURY MEASUREMENTS

Body region	Offset Crash Test at 64km/h (v5)		Side Impact Crash Test at 50km/h (v5)
	Driver	Passenger	Driver
<b>Head HIC</b>	521	226	40
Acceleration (g for 3ms)	55.6	39.9	24.6
<b>Neck - Shear (kN)</b>	0.68	0.35	-
Tension (kN)	1.18	0.57	-
Extension (Nm)	14.8	13.6	-
<b>Chest Accln (g for 3ms)</b>	-	-	-
Compression (mm)	17.96	13.97	17.51
Viscous criterion (m/s)	0.05	0.03	0.11
<b>Abdomen - Force (kN)</b>	-	-	0.610
<b>Pelvis - Force (kN)</b>	-	-	1.220
<b>Upper legs Force (kN)</b>			
Left	0.50	0.70	
Right	1.31	0.60	
Knee displ (mm)			
Left	1.50	5.20	
Right	0.00	1.80	
<b>Lower legs Force (kN)</b>			
Left	2.84	1.40	
Right	2.28	1.34	
Index (Upper/Low)			
Left	0.41 /0.40	0.48 /0.22	
Right	0.43 /0.37	0.37/0.22	

### Bonus points (maximum 5)

Pole Test: 2 pts

Seat belt reminders: 3 (see table below for details)

### Modifiers - deductions from offset test scores

Head	No deduction
Chest	No deduction
Upper leg	No deduction
Lower leg	No deduction
Foot score	Score 4 points

### Modifiers - deductions from side impact test scores

Chest	No deduction
-------	--------------

### Safety features

These specifications are subject to change. Please check with manufacturer for the latest specifications.



Driver airbag	S	Antilock (ABS) brakes / Electronic brake distribution / Brake Assist	S/S/S
Passenger front airbag	S	Electronic stability control (ESC, VSC, DSC, ESP, VSA)	S#
Side airbags, front seats - chest protection	S	3 point centre rear seat belt	S
Side airbags, front seats - head protection	S	Whiplash protection (RCAR protocol)	Good
Side airbags, rear seats - head protection		Intelligent seat belt reminder - driver	S
Driver knee airbag	X	Intelligent seat belt reminder - front passenger	S
Seat belt pretensioners (Front/Rear outboard)	S/X	Intelligent seat belt reminder - rear seats	S

Key:

S = standard on all variants

O = optional on base variant. May be standard on higher variants

V= not available on base variant but standard or optional on higher variants

X = not available on any variant

# ESC required by ANCAP for 5 star rating from 2008