

ANCAP Safety Rating: KIA SORENTO (2015 onwards)



Frontal offset test at 64km/h (Euro NCAP)

This ANCAP safety rating applies to:

Make / Model	Kia Sorento
Year Range	2015 onwards
Variant(s)*	All variants
Vehicle Type	Large SUV

The tested model of Kia Sorento was introduced in Australia and New Zealand in 2015. This ANCAP safety rating applies to all variants.

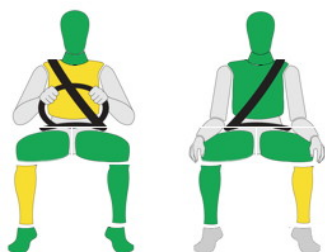
Dual frontal, side chest and side head airbags (curtains) are standard. Antilock brakes (ABS), electronic brake distribution (EBD) and electronic stability control (ESC) are also standard. Advanced seat belt reminders are fitted to all seats.

In the offset crash test driver chest and leg protection was acceptable. Passenger leg protection was also acceptable. Driver protection was good in the side impact crash test. Head protection in the side pole test was good.

Injury Outcomes.

Frontal Offset

Driver Passenger



Side Impact & Pole*

Driver



Whiplash Protection

Driver



* Head protection only.

Test Results Summary.

Airbags	Dual Frontal, Side, Head
Frontal Offset Test	15.62 (out of 16)
Side Impact Test	16.00 (out of 16)
Pole Test	2 (out of 2)
Whiplash Protection	Good
Pedestrian Protection	Acceptable
ESC	Standard
Seat Belt Reminders	3.0 (out of 3)
Overall Score	36.62 (out of 37)
ANCAP Safety Rating	★★★★★
Rating Year[^]	2015

Occupant Protection.

Frontal Offset Test

Each body region is scored out of 4 points

Head / neck:	4.00 points
Chest:	3.75 points
Upper legs:	4.00 points
Lower legs:	3.87 points

The passenger compartment held its shape well in the offset test. Pedal and steering wheel displacements were well controlled. Driver and passenger contact with the airbags was stable. All doors remained closed during the crash.

Side Impact Test

Each body region is scored out of 4 points

Head:	4.00 points
Chest:	4.00 points
Abdomen:	4.00 points
Pelvis:	4.00 points

Good protection was provided for the driver in the side impact test. The side airbags performed well.

Pole Test

Scored out of 2 points

Score:	2.00 points
--------	-------------

The vehicle was eligible for a side pole test because it has side curtain airbags. The vehicle scored the maximum 2 points for head protection in this test.

Whiplash Protection Test

Whiplash protection is assessed to the Euro NCAP Protocol

Geometric test:	Good
Dynamic test:	Good
Overall whiplash rating:	Good

ANCAP Safety Rating: KIA SORENTO (2015 onwards)



ANCAP
Safety ★★★★★



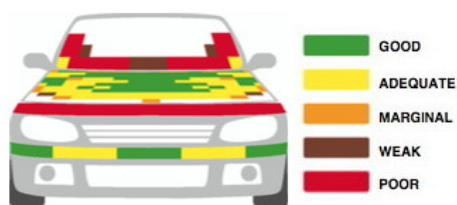
Pedestrian Protection.

Pedestrian Test

Scored out of 36 points

Adult & child head impacts: 18.35 points*
Upper leg impacts: 0.00 points
Lower leg impacts: 5.89 points

This vehicle scored 24.24 out of 36 points (Acceptable). The bumper showed good or adequate protection to pedestrians' legs. However, the front edge of the bonnet scored no points, providing poor protection to the pelvis region. The European Sorento has an active bonnet and Euro NCAP's tests were performed with the bonnet in the raised (deployed) position. The Australasian Sorento does not have an active bonnet but ANCAP was provided with technical information which showed that the overall rating was still acceptable (Tested by Euro NCAP v7).



* Euro NCAP pedestrian results with active bonnet

Score Deductions.

Deductions from frontal offset test scores

Head / neck:
Chest: No deductions for offset test
Upper legs:
Lower legs:

Deductions from side impact test score

Chest: No deductions for side impact test

Deductions from pole test score

Head: No deductions for pole test

Safety Features & Technologies.

Descriptions of each of these safety features and safety assist technologies (SAT) and detail on fitting requirements for each star rating level can be found at ancap.com.au.

Safety Feature / Safety Assist Technology	Availability
Seat belts (three-point) for all forward-facing seats	S
Seat belt pretensioners (front)	S
Seat belt pretensioners (rear outboard)	X
Intelligent seat belt reminder (driver)	S
Intelligent seat belt reminder (front passenger)	S
Intelligent seat belt reminder (2 nd row seats)	S
Intelligent seat belt reminder (3 rd row seats)	S
Airbag - Front (driver)	S
Airbag - Front (passenger)	S
Airbag - Side, chest protection (front seats)	S
Airbag - Side, chest protection (2 nd row seats)	X
Airbag - Side, head protection (front seats)	S
Airbag - Side, head protection (2 nd row seats)	S
Airbag - Side, head protection (3 rd row seats)	X
Airbag - Knee (driver)	X
Airbag - Knee (front passenger)	X
Head restraints for all seats	S
Active bonnet	E
Adaptive cruise control (ACC)	V
Adaptive front lighting systems	V
Antilock braking system (ABS)	S
Automatic headlights	V
Automatic high beam	V
Autonomous emergency braking (AEB)	X
Blind spot monitoring	V
Daytime running lights (DRL)	V
Electronic brakeforce distribution (EBD)	S
Electronic stability control (ESC)	S
Emergency brake assist (EBA)	S
Emergency stop signal	S
Hill launch assist	S
Lane support system (LSS)	V
Reversing collision avoidance	S
Roll stability system	S
Rollover occupant protections systems	S
Manual speed assistance (driver-set speed limiter)	E
Tyre pressure monitoring system (TPMS)	V

These specifications are subject to change. Please check with the manufacturer for the latest specifications.

S = Standard on all variants.
O = Optional on base variant. May be standard on higher variants.
V = Not available on base variant but standard or optional on higher variants.
X = Not available on any variant.
E = Available in Europe / USA but not available on any Australasian variant.

ANCAP Safety Rating: KIA SORENTO (2015 onwards)



ANCAP

Safety ★★★★★



Injury Values & Measurements.

Body Region	Frontal offset test at 64 km/h (v6)		Side impact test at 50 km/h (v6)
	Driver	Passenger	Driver
Head			
HIC	38.00	213.00	16.00
Acceleration (g for 3ms)	37.60	39.00	14.90
Neck			
Shear (kN)	0.52	0.37	-
Tension (kN)	1.16	0.88	-
Extension (Nm)	8.50	19.70	-
Chest			
Acceleration (g for 3ms)	-	-	-
Compression (mm)	23.73	18.23	13.08
Viscous criterion (m/s)	0.00	0.00	0.02
Abdomen			
Force (kN)	-	-	0.23
Pelvis			
Force (kN)	-	-	0.69
Upper legs			
Femur force left (kN)	0.14	0.24	
Femur force right (kN)	0.11	0.29	
Knee displacement left (mm)	0.00	3.32	
Knee displacement right (mm)	0.00	0.66	
Lower legs			
Force left (kN)	1.24	0.97	
Force right (kN)	1.51	0.91	
Index (upper / lower) left	0.38 / 0.27	0.24 / 0.42	
Index (upper / lower) right	0.43 / 0.24	0.19 / 0.24	
Intrusion Measurements*			
Steering column			
Forward (mm)	47		
Downward (mm)	21		
Sideways (mm)	4		
Pedals			
Brake - rearward (mm)	26		
Brake - upward (mm)	9		
A-Pillar			
Rearward (mm)	1		

* ANCAP safety ratings do not automatically extend to variants that have different body styles, engine configurations, driven wheels or occupant restraint systems (e.g. fewer airbags). In these cases, ANCAP considers technical evidence submitted by manufacturers before deciding on extending a rating to additional variants of a model. For further information about the application of ANCAP safety ratings to model variants, see the ANCAP Variant Policy.

^ The Rating Year denotes the year requirements against which a vehicle has been assessed. The Rating Year is determined by ANCAP and may be based on the year in which a new vehicle model is first launched into the Australian and/or New Zealand markets; the year in which the vehicle was tested (if tested by Euro NCAP); or, for vehicles which hold an existing ANCAP safety rating, the year in which the rating was updated (or earlier applicable year).

Assessment Details.

Tested Make / Model	Kia Sorento GLS LHD
Tested Vehicle(s) Built	2014
Tested Body Type	Wagon
Tested Vehicle Kerb Weight	1840 kg
Tested Vehicle Engine	2.2 diesel 4WD
Tested By	Euro NCAP
Assessed By	ANCAP
Document Reference	SORENTO15
Rating Published	May 2015
Document created/revised	13/5/2015

